

# Haute Lune

Saxophone ténor en Sib

Musique de Thierry Chauve

Chord progression for Saxophone Tenor in B-flat:

Measure 1: D

Measure 2: A<sup>9</sup>/E

Measure 3: B<sup>7</sup>

Measure 4: E<sub>M</sub>A<sub>3</sub><sup>9</sup>#<sup>11</sup>

Measure 5: A

Measure 6: G/B

Measure 7: A<sup>9</sup>/B

Measure 8: F<sup>#7</sup>/A<sup>#</sup>

Measure 9: B<sub>M</sub>

Measure 10: D

Measure 11: A<sup>9</sup>/E

Measure 12: B<sup>7</sup>

Measure 13: E<sub>M</sub>A<sub>3</sub><sup>9</sup>#<sup>11</sup>

Measure 14: A

Measure 15: G/B

Measure 16: A<sup>9</sup>/B

Measure 17: F<sup>#7</sup>/A<sup>#</sup>

Measure 18: B<sub>M</sub>

Measure 19: G/B

Measure 20: D/A

Measure 21: B<sup>7</sup>/A

Measure 22: E<sub>M</sub>/G

Measure 23: E<sub>M</sub><sup>7</sup>/G

Measure 24: D

Measure 25: G

Measure 26: E<sub>M</sub>

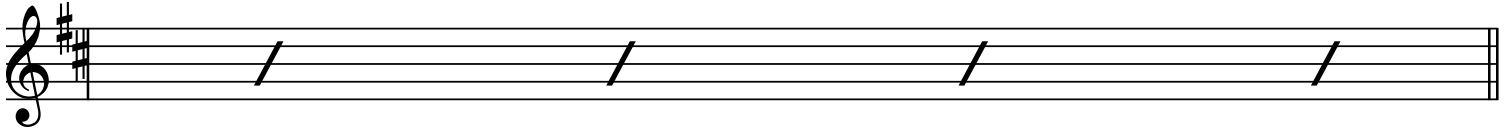
Measure 27: C<sup>#</sup>dim

Measure 28: D

9b

17a

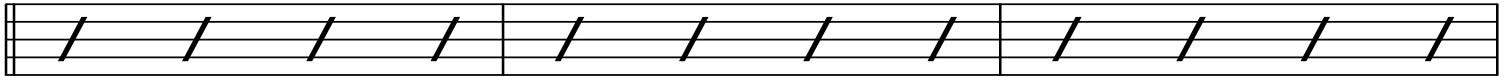
A<sup>7</sup>/E



G/B

D/A

B<sup>7</sup>/A

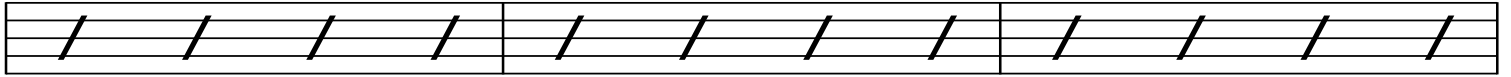


27b

E<sub>m</sub>/G

E<sub>m</sub><sup>7</sup>/G D

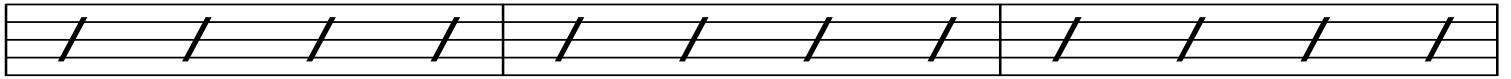
G



E<sub>m</sub>

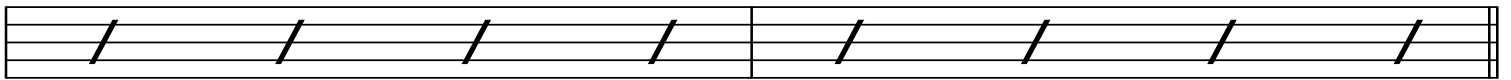
C<sup>#</sup>DiM

D



A<sup>7</sup>/E

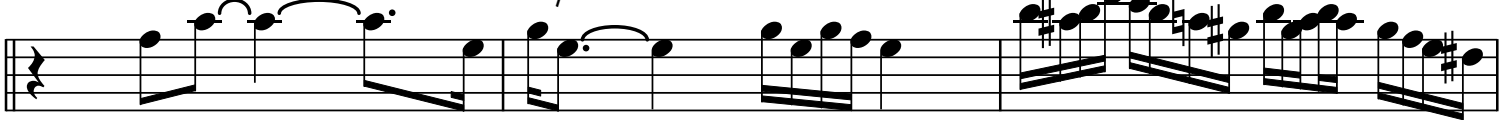
D



D

A<sup>9</sup>/E

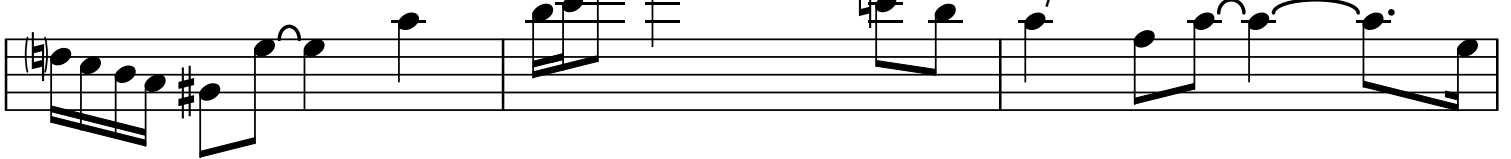
B<sup>7</sup>



E<sub>m</sub>A<sub>3</sub><sup>9</sup>#11

A

G/B



A<sup>9</sup>/B

F<sup>#</sup>7/A<sup>#</sup>

B<sub>m</sub>



D

A<sup>9</sup>/E

B<sup>7</sup>

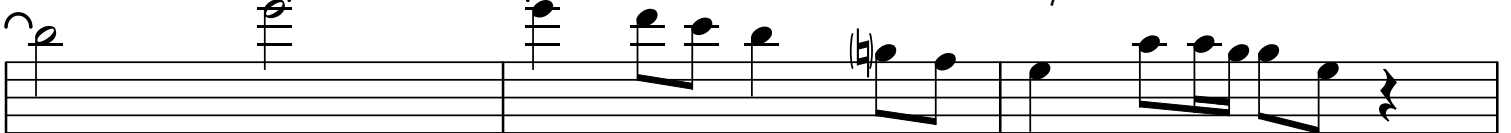


46b

E<sub>m</sub>A<sub>3</sub><sup>9</sup>#11

A

G/B



A<sup>9</sup>/B F#<sup>7</sup>/A# B<sub>M</sub>

G/B D/A B<sup>7</sup>/A

54a

E<sub>M</sub>/G E<sub>M</sub><sup>7</sup>/G D G

E<sub>M</sub> C#<sub>DIM</sub> D

A<sup>7</sup>/E

G/B D/A B<sup>7</sup>/A

64b

E<sub>M</sub>/G E<sub>M</sub><sup>7</sup>/G D G

E<sub>M</sub> C#<sub>DIM</sub> D

A<sup>7</sup>/E