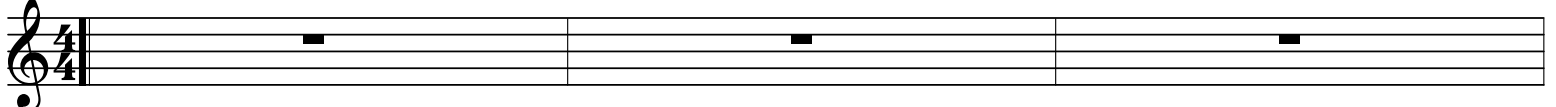


Habanera


Guitare solo

Musique de Thierry Chauve


Em Am



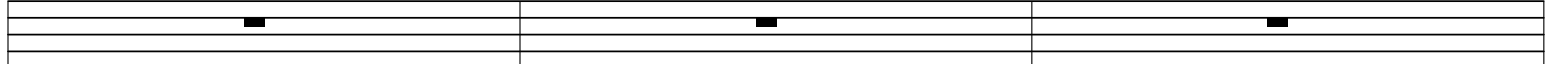
Bm Em



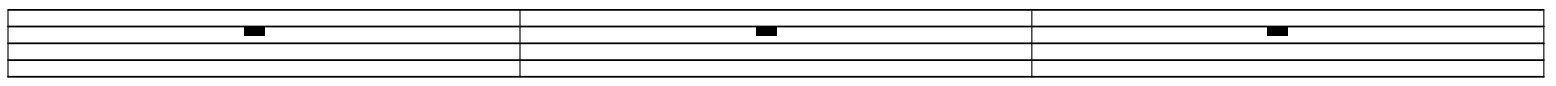
C C G9/B



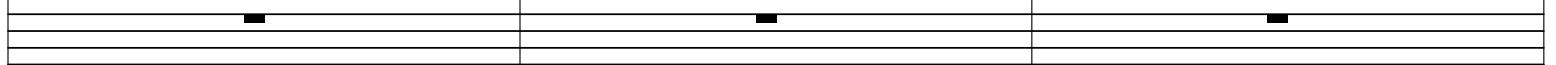
Am G Am Em Am




G Am Em Am



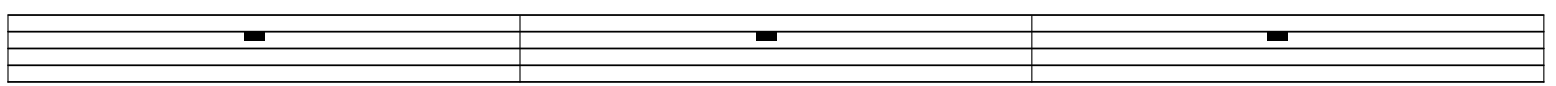
Am G C CMaj7 C



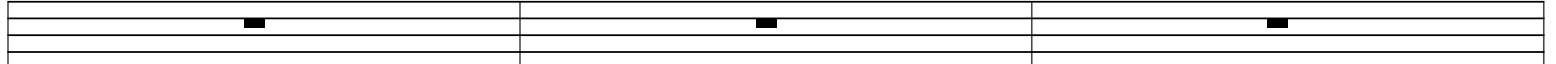
Am B7 Em



Em C G7



C E7 Am/E E Am



Em



Em

Am



Bm

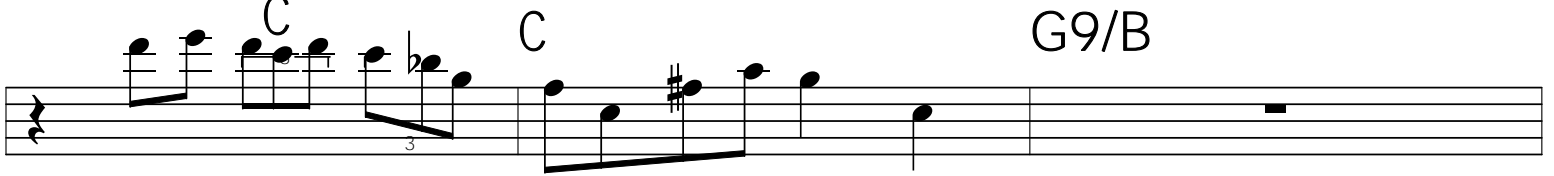
Em



C

C

G9/B



Am

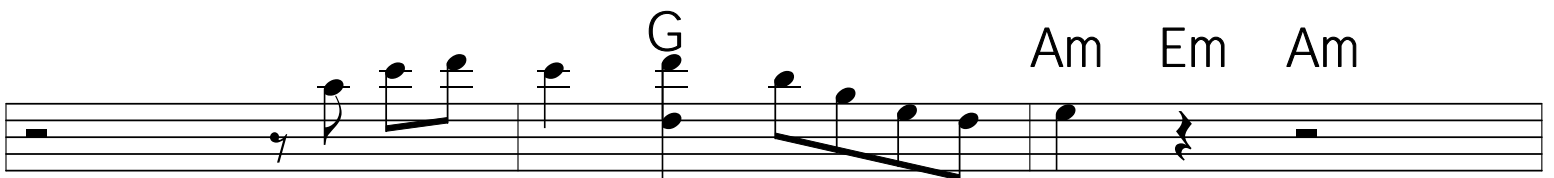
G

Am Em Am



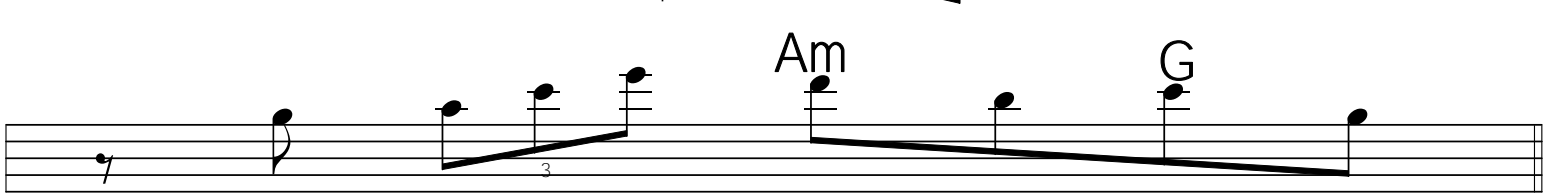
G

Am Em Am



Am

G



C CMaj7

C

Am



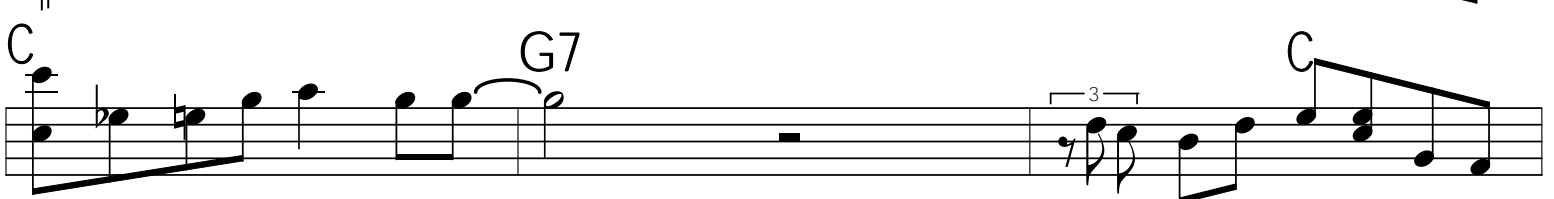
B7 Em

Em



C G7

C



E7 Am/EE Am Em

Musical notation for a guitar piece. The first staff is in treble clef and contains a sequence of notes: E4, G4, A4, B4, C5, B4, A4, G4, F4, E4. Above the notes are four triplets: the first triplet is on B4, C5, B4; the second on C5, B4, A4; the third on A4, G4, F4; and the fourth on G4, F4, E4. The second staff is a continuation of the first staff, showing the notes E4, G4, A4, B4, C5, B4, A4, G4, F4, E4. The piece ends with a double bar line.