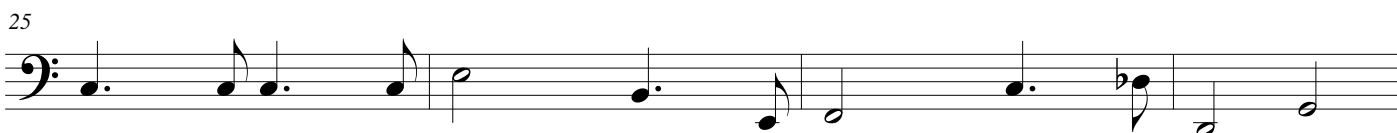
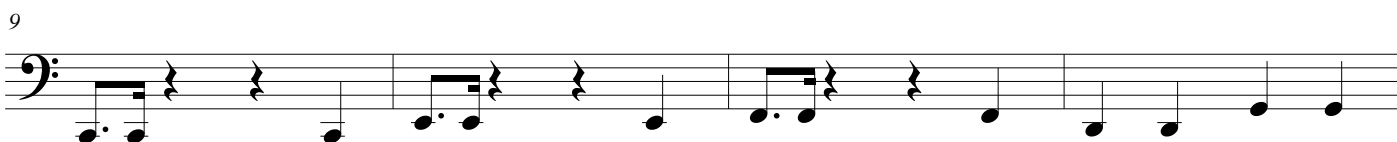
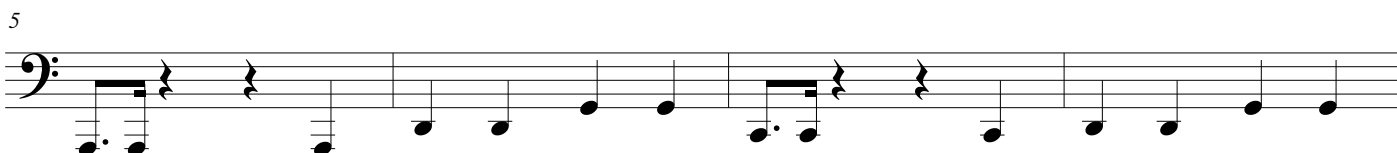


Colorations tonales

Musique de Thierry Chauve



33 \emptyset

A musical staff in bass clef with a common time signature. The staff contains six notes: G2 (half note), F2 (quarter note), E2 (quarter note), D2 (quarter note), C2 (quarter note), and B1 (quarter note). The notes are connected by a single horizontal line, indicating a melodic sequence. The staff ends with a double bar line.