

Violin 1

Ad faciem: "Illustra faciem tuam" from "Membra Jesu Nostris"

Dieterich Buxtehude (BuxWV 75 No. 7) 1680

Arranged for Winds & Strings by Mike Magatagan 2024

VII. Ad faciem (♩ = 85)

The musical score for Violin 1 is written in treble clef with a key signature of one flat (B-flat) and a common time signature (C). The tempo is marked as *Ad faciem* with a quarter note equal to 85 beats per minute (♩ = 85). The score begins with a *mp* (mezzo-piano) dynamic and includes several trills (tr) and ritardandos (rit.).

Key features of the score include:

- Measures 20-21: A 4-measure rest.
- Measures 35-36: A 2-measure rest.
- Measures 44-45: A 4-measure rest.
- Measures 57-58: A 2-measure rest.
- Measures 65-66: A 2-measure rest.
- Measures 71-72: A 19-measure rest.

Tempo changes occur at measure 35, marked *Andante* (♩ = 60), and at measure 71, marked *Andante* (♩ = 52). The score concludes with a *rit.* marking.

95

rit.



Andante (♩ = 50)

102



108



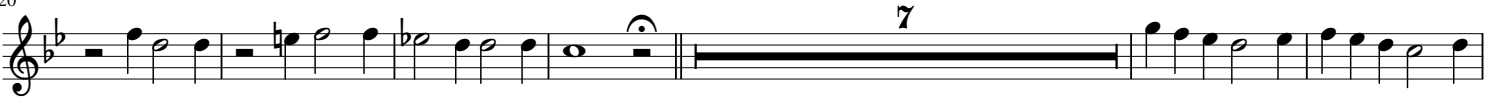
114



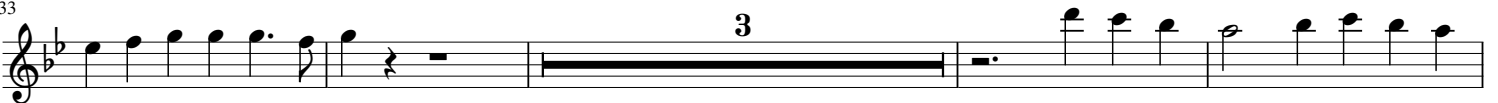
120

rit.

Allegro (♩ = 80)



133



140



150



166

rit.

