

Trio Sonata BWV528 en Sol menor

Veü 1-Violí

Transcripció per trio de cordes de l'original en Mi m

J.S.Bach

Arranjament fet per Toni Tudurí - Febrer 2020

1-Adagio/Vivace

The image displays a musical score for the first violin part of J.S. Bach's Trio Sonata BWV 528 in G minor. The score is written in a single system with ten staves, each containing a line of music. The key signature is G minor (two flats) and the time signature is 4/4. The tempo is marked '1-Adagio/Vivace'. The score includes various musical notations such as eighth and sixteenth notes, rests, and dynamic markings. A '3' is written above the staff at measure 10, indicating a triplet. Trills are marked with 'tr' above notes at measures 58 and 63. The piece concludes with a double bar line at the end of the tenth staff.

Toni Tudurí (c) febrer 2020

66



69



72



75



78



81



83



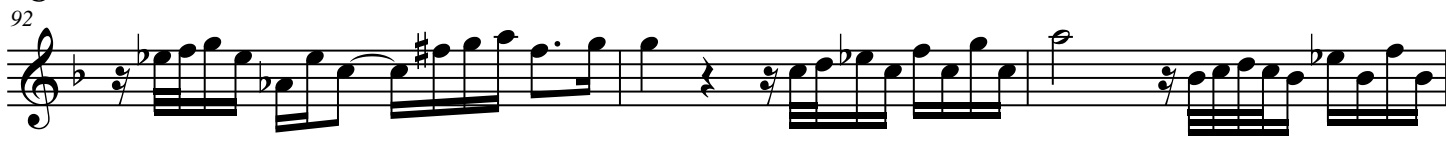
86



89



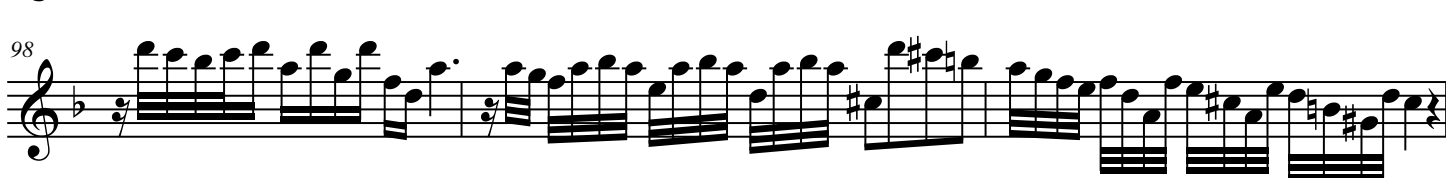
92



95



98



101



104

108

This section contains measures 101 through 108. It features a complex rhythmic pattern with frequent sixteenth and thirty-second notes. Measure 108 concludes with a trill (tr) and a fermata over a whole note.

3-Un poco allegro

111



116

120

124

128

132

136

140

144

This section contains measures 111 through 144. It begins with a 3/8 time signature. The music is characterized by frequent triplets (marked with '3') and trills (marked with 'tr'). The piece concludes with a double bar line at measure 144.

148

152

157 *tr*

162

167

171

176

182 *tr*

187

191

195

200

204

Detailed description: This image shows a page of musical notation for the Trio Sonata BWV 528 in G minor. The page contains ten staves of music, each starting with a measure number. The notation is in treble clef with a key signature of two flats (B-flat and E-flat). The music features a variety of rhythmic patterns, including eighth and sixteenth notes, and rests. Trills are indicated by the 'tr' symbol above certain notes. The piece concludes with a fermata over the final note of the tenth staff.