

# Concert clàssic n°1 per flauta i oboè

Antoni Tudurí

**Allegro moderato**

5

9

13

17

21

25

29

33

37

41

45

free-scores.com

57

61

*p*

65

69

*f*

*mf*

76

81

85

89

93

*mf*

97

101

113

118 *p*

125

131 *mf*

139

143 *f*

145

149 *rit.*

Detailed description: This block contains the musical notation for measures 113 through 149. It is written in a bass clef with a key signature of one sharp (F#). The music features a variety of rhythmic patterns, including eighth and sixteenth notes, and rests. Dynamic markings are present: *p* (piano) at measure 118, *mf* (mezzo-forte) at measure 131, *f* (forte) at measure 143, and *rit.* (ritardando) at measure 149. A crescendo hairpin is visible at the end of measure 139.

Andante

8

free-scores.com

Detailed description: This block shows the beginning of a new section, measures 8 through 17. It is written in a bass clef with a key signature of one sharp (F#) and a 6/8 time signature. The music consists of eighth and sixteenth notes. A watermark for 'free-scores.com' is visible in the center of the page.

4

Concert clàssic n°1 per flauta i oboè

24



30



35



41



46



52



59



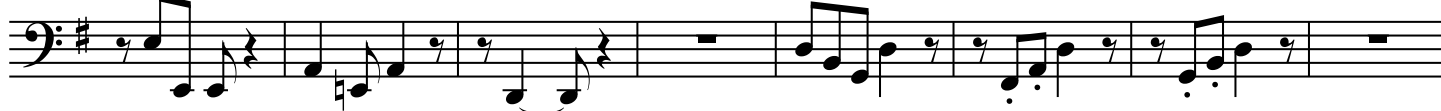
65



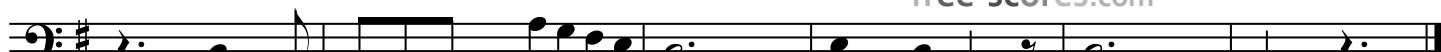
72



79



87



**Allegro**

Concert clàssic n°1 per flauta i oboè

First musical staff, measures 1-5. Bass clef, key signature of one sharp (F#), 4/4 time signature. The melody begins with a quarter rest followed by eighth notes.

Second musical staff, measures 6-10. Continuation of the melody with eighth notes and quarter notes.

Third musical staff, measures 11-15. Continuation of the melody with eighth notes and quarter notes.

Fourth musical staff, measures 16-20. Continuation of the melody with eighth notes and quarter notes.

Fifth musical staff, measures 21-25. Continuation of the melody with eighth notes and quarter notes.

Sixth musical staff, measures 26-30. Continuation of the melody with eighth notes and quarter notes.

Seventh musical staff, measures 31-35. Continuation of the melody with eighth notes and quarter notes.

Eighth musical staff, measures 36-40. Continuation of the melody with eighth notes and quarter notes.

Ninth musical staff, measures 41-45. Continuation of the melody with eighth notes and quarter notes.

Tenth musical staff, measures 46-50. Continuation of the melody with eighth notes and quarter notes.

Eleventh musical staff, measures 51-55. Continuation of the melody with eighth notes and quarter notes.

Twelfth musical staff, measures 56-60. Continuation of the melody with eighth notes and quarter notes.

6

Concert clàssic n°1 per flauta i oboè

71

76

87

90

94

99

108

112

**Epilogue** (La vida de tothom hauria d'acabar amb pau i acompanyats dels records de la vida i amb el regal etern d'haver viscut).

118

con sordina ...

123

129

free-scores.com