

Vault
M
422
W135
no. 11

MOTIFS DE

1

BEATRICE DI TENDA

9728

de

BELLINI.

PAUL WAGNER.

1^{re} QUATUOR.

And^{te} amoroso.

VIOLON.

4
f
3
p
4
p
f grandioso.
3
3
3
3
3
3
Allegro
8
mf
cresc
f
3 Rit. 9

VIOLON.

Largo sostenuto.

mf *p* *mf* *p*

Allegro moderato.

mf *tr* *tr*

VIOLON

Più Allegro.
p

mf

Cresc

ff

pp

Larghetto.

Larghetto.
pp

sp *fp*

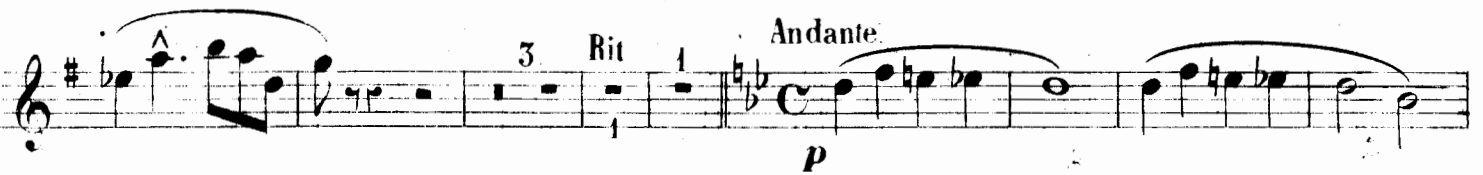
fp

VIOLON

Violin musical score, measures 1-10. The music is in a minor key (one flat) and 4/4 time. It begins with a first finger fingering (1) and a piano (*p*) dynamic. The piece features a complex melodic line with many slurs and ties, and a rhythmic accompaniment of eighth and sixteenth notes. A crescendo (*Cresc.*) is indicated at the end of measure 10.

Violin musical score, measures 11-14. The tempo is marked *Moderato*. The key signature changes to a major key (two sharps). The music starts with a mezzo-forte (*mf*) dynamic and includes first (1) and third (3) fingerings. The piece concludes with a final flourish.

VIOLON.



VIOLON

Allegro. 7

mf

Cresc

ff

Doublé le mouvt

ff

Andante.