

QUARTETT.

VIOLA.

Robert Volkmann.

Allegro
con spirito

The musical score for the Viola part is written in 3/4 time with a key signature of one flat. It consists of 11 staves of music. The first staff begins with a forte (*f*) dynamic and a *dim:* marking. The second staff features a *dim:* marking, followed by *f* and *mf*. The third staff continues with *f* and *mf*. The fourth staff has *f* and *pp*. The fifth staff includes *f*, *p*, and *pp*. The sixth staff starts with *p* and *cresc:*. The seventh staff has *dim:* and *p*. The eighth staff begins with *cresc.* and ends with *dim:*. The ninth staff, marked with a 'B', has *f*, *p*, *f*, *p*, and *f*. The tenth staff features *ff*, *sf*, *sf*, *ff*, *sf*, and *p*. The eleventh staff starts with *ff* and *sf*.

VIOLA.

The musical score for Viola consists of 13 staves of music. The key signature is one flat (B-flat) and the time signature is 3/4. The score includes various dynamics and performance markings:

- Staff 1: *f*, *crese:*, *ff*, *p*
- Staff 2: *crese:*, *f*
- Staff 3: *fp*, with fingerings 1 and 2.
- Staff 4: Fingerings 3, 4, 5, 6, 7.
- Staff 5: *p*, *mf*
- Staff 6: *crese:*, *f*
- Staff 7: *f*, *dim:*
- Staff 8: *dim:*, *f*, *D*
- Staff 9: *p*, *f*, *p*
- Staff 10: *p*, *v*
- Staff 11: *p*

VIOLA.

p *dim:* *cresc:* *p* *dim:* *p* *cresc:* *f* *f* *p* *f* *p* *f* *cresc: ff* *sf* *sf* *ff* *sf* *p* *ff* *E* *p* *cresc:* *f* *cresc:* *ff* *Più mosso.* *f* *ff* *cresc:*

VIOLA.

Andante. $3/4$ p

rit: a tempo.

cresc:

mf = f

dim:

cresc:

VIOLA.

musical score for Viola, measures 1-10. The music is in B-flat major and 3/4 time. It features a series of sixteenth-note patterns with various dynamics: *mp*, *pp*, *cresc.*, *f*, *dim.*, and *p*.

Allegro molto.

musical score for Viola, measures 11-20. This section is marked *Allegro molto* and *p stacc.*. It includes a section labeled 'scherzo' and features a variety of dynamics such as *p*, *sf*, *ff*, and *f*. A first ending bracket labeled 'A' is present in measure 18.

VIOLA.

Staff 1: *p* *dim:*

Staff 2: *ff*

Staff 4: *p* *stacc:*

Staff 5: *cresc:* *f* **B**

Staff 6: *dim:* *p*

Staff 9: *dim:* *p*

Staff 10: *f*

Staff 12: *p* **Meno.**

VIOLA.

11 staves of musical notation for Viola. The key signature is one flat (B-flat). The music includes various dynamics and performance markings:

- Staff 1: *p*, *pp*, *ff*, *pp*
- Staff 2: *p*, *stacc.*
- Staff 3: *dim.*, *pp*
- Staff 4: *sf*, *sf*, *sf*, *sf*, *f*, *f*
- Staff 5: *p*, *f*
- Staff 6: *p*, *sf*, *sf*
- Staff 7: *sf*, *sf*, *sf*, *sf*, *sf*, *sf*, *p*
- Staff 8: *p*
- Staff 9: *f*
- Staff 10: *dim.*, *p*, *ff*
- Staff 11: *ff*, *1*

VIOLA.

1 2 3 4 5 1 2

p

3 4 5 6 7 8 9 10 *rit.* *a tempo.* *cresc.*

con fuoco.

ff

Andantino.

p *p*

mf *f*

ritard. *p* *fp* *pp*

Allegro energico.

f

sf *p*

VIOLA.

Musical score for Viola, measures 1-14. The score is written in bass clef with a key signature of two flats (B-flat and E-flat). The time signature is 3/4. The music consists of a single melodic line with various dynamics and articulations. Measures 1-6 are in a common key signature. Measures 7-14 change to a key signature of three sharps (F#, C#, G#). Dynamics include *ff*, *p*, *mf*, and *cresc.*. Performance instructions include *poco marcato.* and *decresc. rit. a tempo.*. There are first and second endings marked with '1' and '2' in measures 6 and 7 respectively. A section marked 'A' begins in measure 13.

VIOLA.

poco marcato *rit:*

p *pp*

a tempo. *pp* *p* *cresc:*

a tempo. *f* *rit:* *ff*

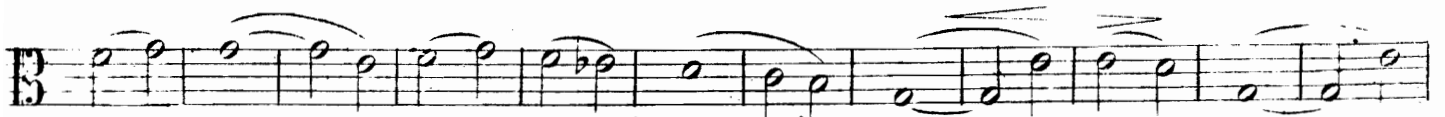
sf *p*

f

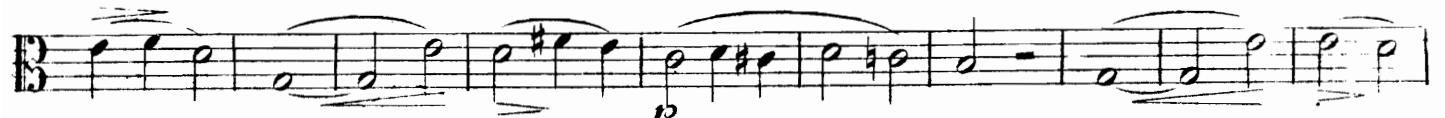
ff *p*

poco marcato. *p* *mf* *cresc:*

VIOLA.



decresc. rit: a tempo.



p



p

poco marcato.

rit:



p

p

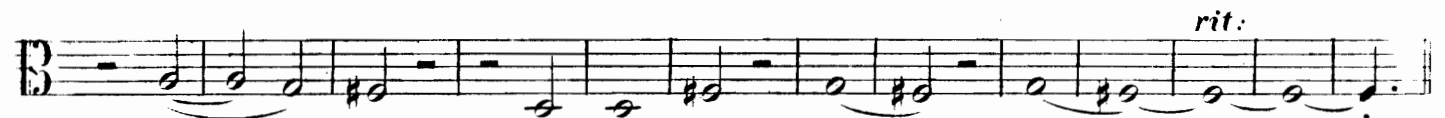
a tempo.

1

1



pp



rit:

Presto.



p



f



p

f

p



p



crese.

p



crese.

f



ff