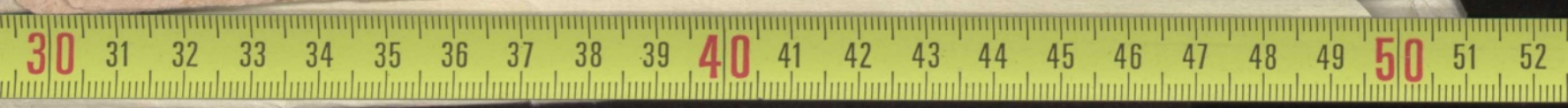


Trío Sento, Violino e Basso Original del Vivaldi  
Al: non molto J. G. Conte Wittenberg

The image displays a page of handwritten musical notation for a Trio in G major, originally by Vivaldi. The score is written for Violin and Bass. The tempo is marked 'Al: non molto' and the dynamics are 'Sento'. The notation includes various rhythmic figures, such as sixteenth-note runs and triplet patterns. The piece concludes with a double bar line and repeat dots. A ruler at the bottom of the page indicates the page number 50.

Handwritten musical score on aged paper, consisting of ten systems of staves. The notation includes treble and bass clefs, various note values, rests, and dynamic markings such as *Vt. supra*. The manuscript shows signs of age, including foxing and staining. A ruler is visible at the bottom of the page for scale.



Handwritten musical notation on a five-line staff, featuring various note values and rests.

Handwritten musical notation with the instruction *Vt supra* written above the staff.

Handwritten musical notation on a five-line staff, showing a sequence of notes.

Handwritten musical notation on a five-line staff, including a treble clef and various note values.

Handwritten musical notation on a five-line staff, showing a sequence of notes.

Handwritten musical notation on a five-line staff, including a treble clef and various note values.

*Andretto lento*

Handwritten musical notation on a five-line staff, featuring a treble clef and a complex melodic line.

Handwritten musical notation on a five-line staff, including a treble clef and various note values.

Handwritten musical notation on a five-line staff, including a treble clef and various note values.

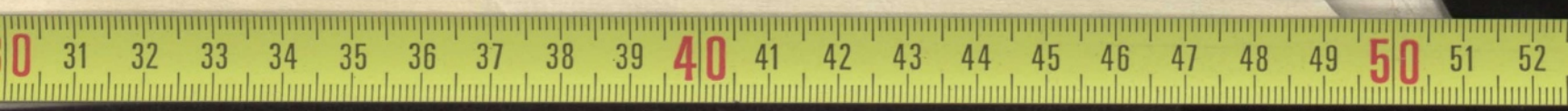
Handwritten musical notation on a five-line staff, featuring a treble clef and various note values.

Handwritten musical notation on a five-line staff, including a treble clef and various note values.

Handwritten musical notation on a five-line staff, including a treble clef and various note values.



Handwritten musical score on aged paper, consisting of ten systems of staves. Each system contains two staves, likely representing a treble and bass clef. The notation includes various note values, rests, and bar lines. The paper shows signs of age, including discoloration and some staining. The right edge of the page shows the continuation of the score on the next page.



All<sup>o</sup>:

This image shows a page of handwritten musical notation on aged, yellowed paper. The page is numbered '8' in the top right corner. The music is written in brown ink and consists of approximately 13 staves. The notation includes various rhythmic values, such as eighth and sixteenth notes, and rests. There are several instances of triplets, indicated by a '3' above the notes. The piece is marked 'All<sup>o</sup>' (Allegro) at the top left. A yellow ruler is placed at the bottom of the page for scale, showing measurements in centimeters from 48 to 71. The paper shows signs of age, including some staining and wear at the edges.

Handwritten musical notation on a single staff, featuring complex rhythmic patterns and dense note clusters.

Handwritten musical notation on a single staff, starting with a treble clef and a key signature of one sharp (F#), with the word "Supra" written above the staff.

Handwritten musical notation on a single staff, starting with a bass clef and a key signature of one sharp (F#).

Handwritten musical notation on a single staff, featuring complex rhythmic patterns and dense note clusters.

Handwritten musical notation on a single staff, featuring complex rhythmic patterns and dense note clusters, with a '3' above the first measure.

Handwritten musical notation on a single staff, starting with a bass clef and a key signature of one sharp (F#).

Handwritten musical notation on a single staff, featuring complex rhythmic patterns and dense note clusters.

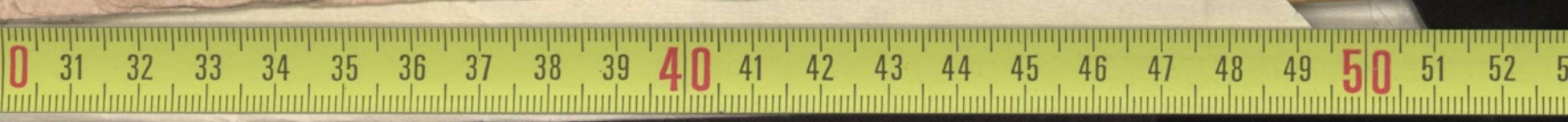
Handwritten musical notation on a single staff, starting with a treble clef and a key signature of one sharp (F#), with the word "Supra" written above the staff.

Handwritten musical notation on a single staff, starting with a bass clef and a key signature of one sharp (F#).

Handwritten musical notation on a single staff, featuring complex rhythmic patterns and dense note clusters, with a '6' above the first measure.

Handwritten musical notation on a single staff, starting with a treble clef and a key signature of one sharp (F#), with the word "Supra" written above the staff.

Handwritten musical notation on a single staff, starting with a bass clef and a key signature of one sharp (F#).



Handwritten musical notation on three staves. The top staff begins with a treble clef and contains several measures of music, including a key signature change to one flat (B-flat) and a common time signature. The middle staff contains vertical bar lines and a final flourish. The bottom staff begins with a bass clef and contains several measures of music, ending with a flourish.

*Fine*