

Guitarra 1

TWV - 33

36 FANTASIAS

FANTASIA N°20

TRANSCRIPCIÓN: LUIS ALVAREZ

TELEMANN
(1681-1716)

♩ = 110

Measures 1-3 of the musical score. Measure 1 starts with a treble clef, a key signature of three sharps (F#, C#, G#), and a 4/4 time signature. The first measure contains a quarter note G4. The second measure changes to a 6/4 time signature and contains a half note chord G4-B4. The third measure contains a half note chord G4-B4.

Measures 4-6 of the musical score. Measure 4 contains a quarter note G4. Measure 5 contains a quarter note A4. Measure 6 contains a quarter note B4.

Measures 7-9 of the musical score. Measure 7 contains a quarter note C5. Measure 8 contains a quarter note B4. Measure 9 contains a quarter note A4.

Measures 10-12 of the musical score. Measure 10 contains a quarter note G4. Measure 11 contains a quarter note F#4. Measure 12 contains a quarter note E4.

Measures 13-15 of the musical score. Measure 13 contains a quarter note D4. Measure 14 contains a quarter note C4. Measure 15 contains a quarter note B3.

Measures 16-18 of the musical score. Measure 16 contains a quarter note A3. Measure 17 contains a quarter note G3. Measure 18 contains a quarter note F#3.

Guitarra 1

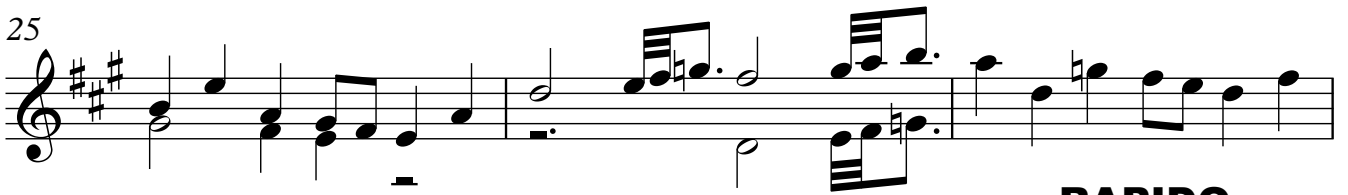
19



22



25



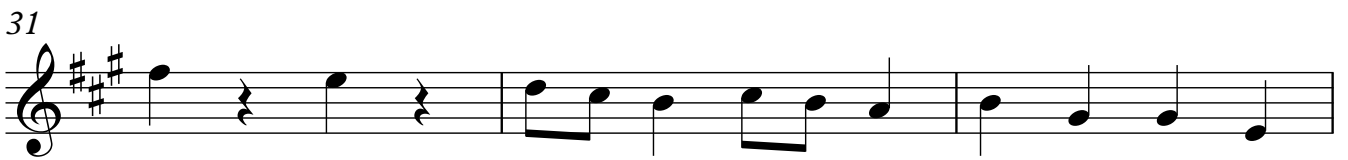
RAPIDO

28

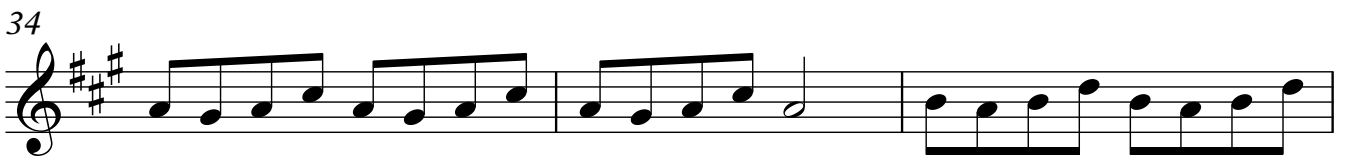


$\text{♩} = 160$

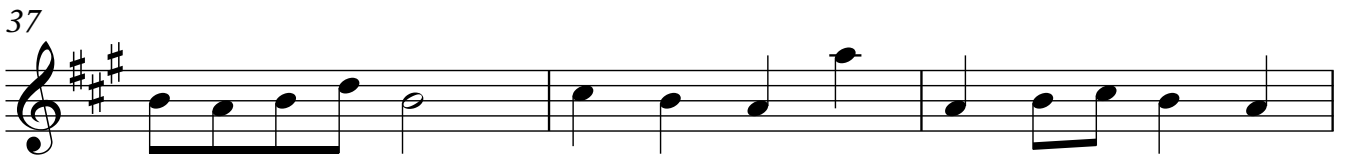
31



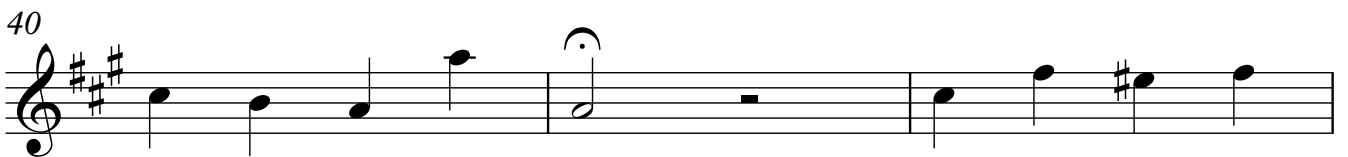
34



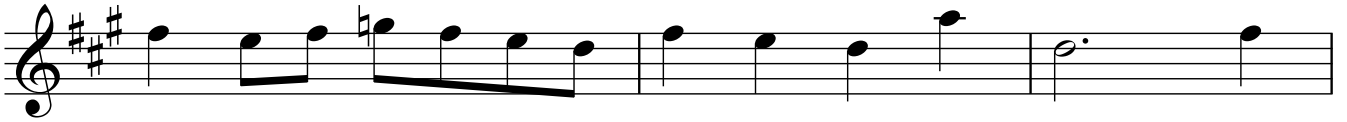
37



40



67



70

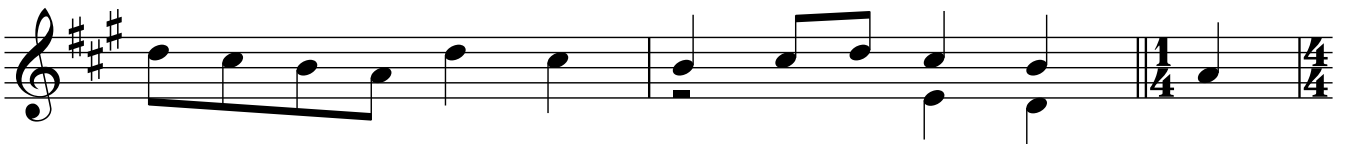


73

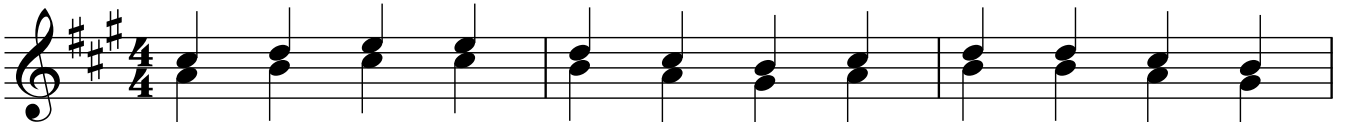


76

♩ = 110



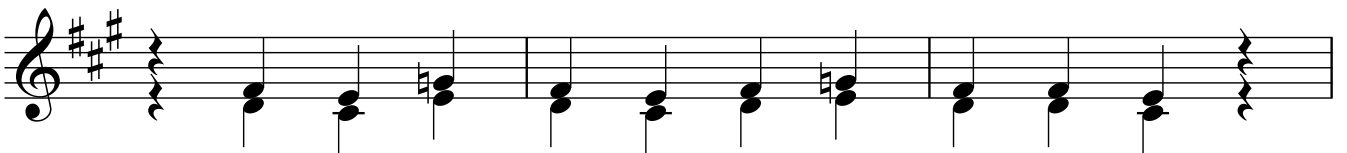
79



82



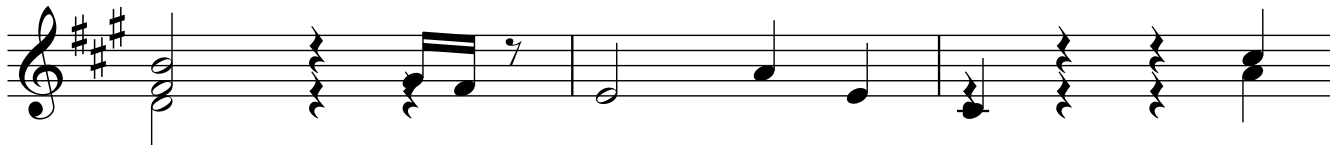
85



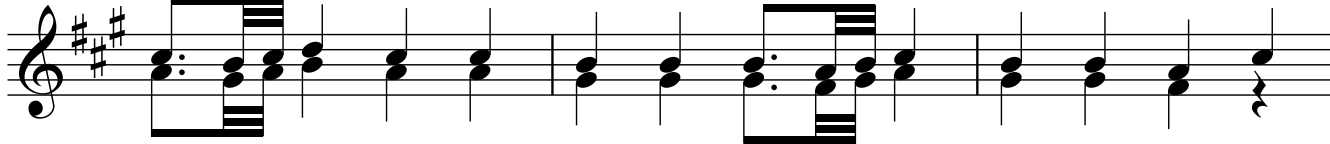
88



91



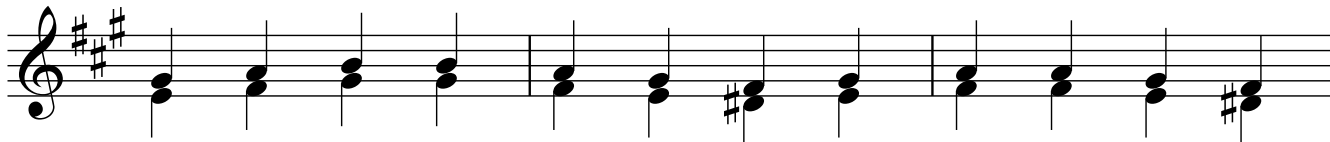
94



97



100



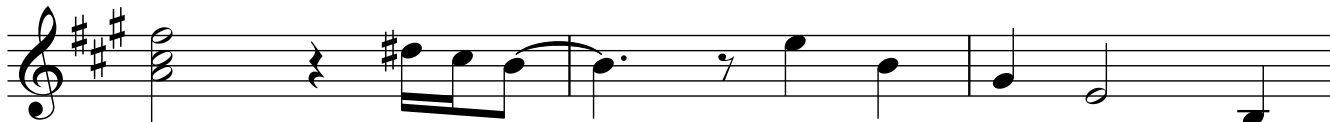
103



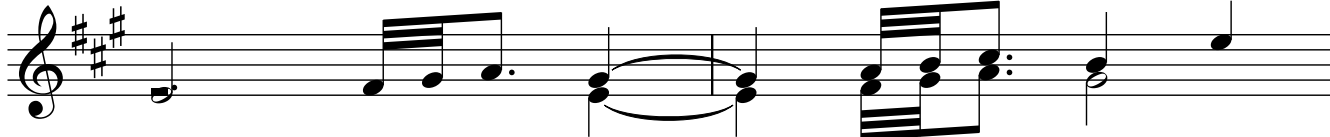
106



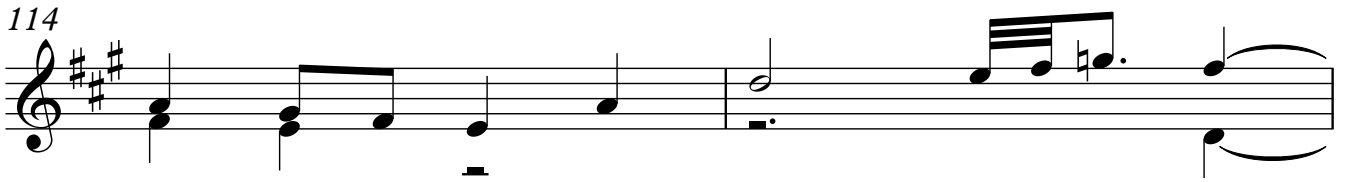
109



112

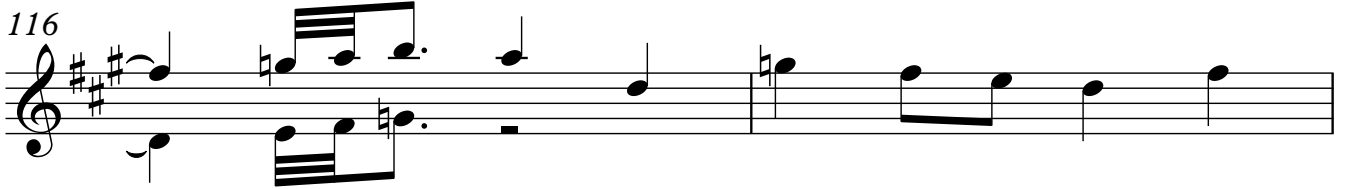


114



Musical notation for measure 114, featuring a treble clef, a key signature of three sharps (F#, C#, G#), and a 9/8 time signature. The notation includes a series of eighth notes and a dotted quarter note, with some notes beamed together.

116



Musical notation for measure 116, continuing the melodic line with eighth notes and a dotted quarter note.

118



Musical notation for measure 118, showing a continuous eighth-note pattern that concludes with a double bar line and repeat dots.

LIGERAMENTE

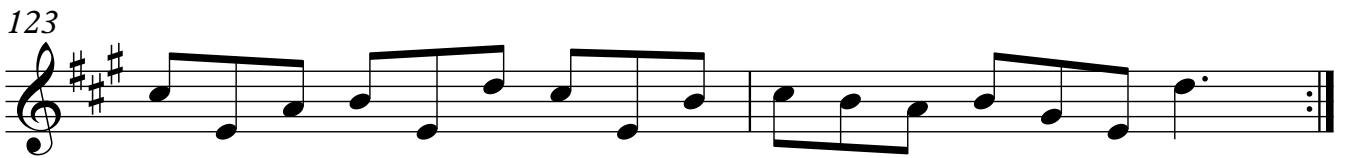
121

♩ = 140



Musical notation for measure 121, starting with a treble clef, a key signature of three sharps, and a 9/8 time signature. It includes a tempo marking of a quarter note equal to 140 beats per minute. The notation features eighth notes and a dotted quarter note.

123



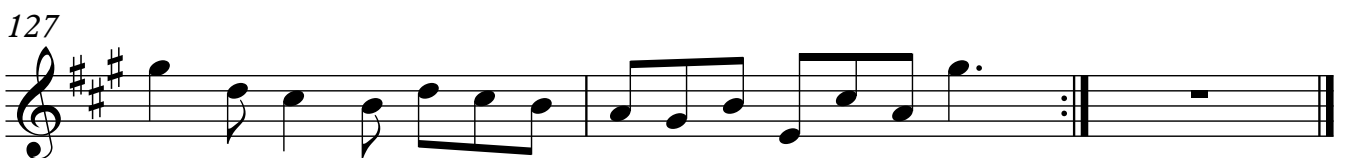
Musical notation for measure 123, continuing the eighth-note melodic line.

125



Musical notation for measure 125, featuring eighth notes and a dotted quarter note.

127



Musical notation for measure 127, concluding the piece with a double bar line and repeat dots.