

Guitarra 1

TWV - 30 - 26

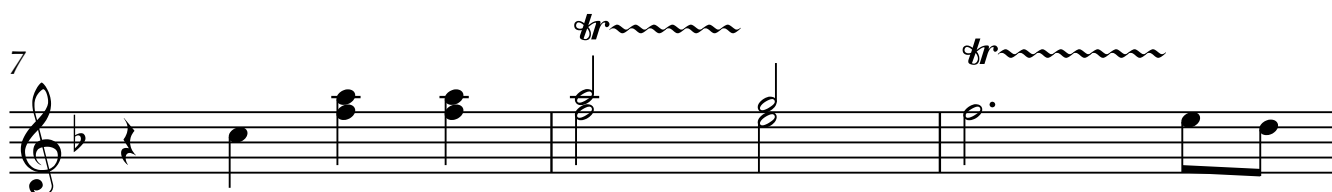
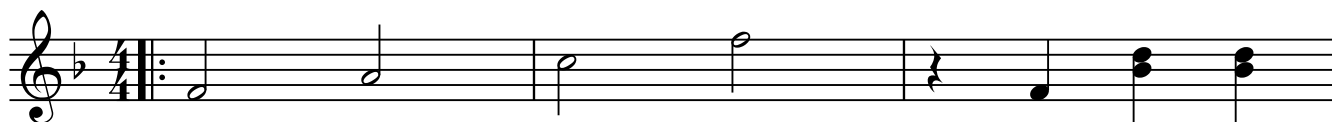
FUGA N°4

TRANSCRIPCIÓN: LUIS ALVAREZ

TELEMANN
(1681-1767)

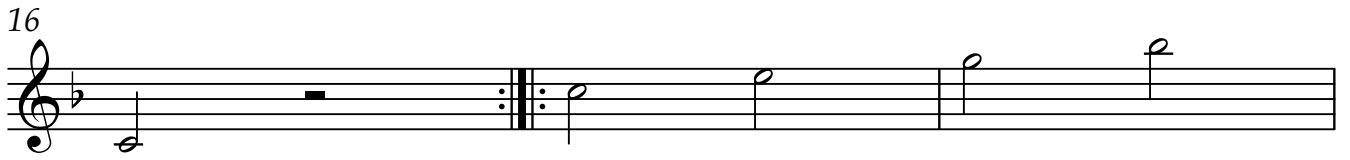
PRESTO

♩ = 220



Guitarra 1

16



Musical staff starting at measure 16. It begins with a quarter note G4, followed by a whole rest. A repeat sign is present. The staff continues with a quarter note G4, a quarter note A4, a quarter note Bb4, and a quarter note C5.

19




Musical staff starting at measure 19. It begins with a quarter rest, followed by an eighth-note pair (G4, A4), a quarter note Bb4, a quarter note C5, a quarter note Bb4, a quarter note A4, an eighth-note pair (G4, A4), and a quarter note G4.

22



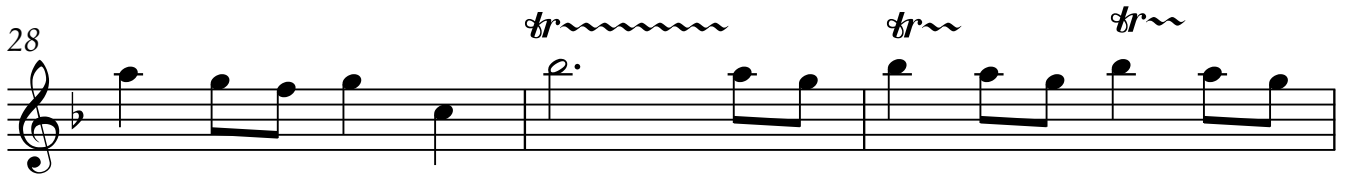
Musical staff starting at measure 22. It begins with a quarter rest, a wavy line labeled *trm* above it, a quarter note G4, an eighth-note pair (A4, Bb4), a quarter note C5, a quarter note Bb4, a quarter note A4, a quarter rest, and an eighth-note pair (G4, A4).

25




Musical staff starting at measure 25. It begins with a quarter note G4, followed by quarter notes A4, Bb4, C5, Bb4, A4, and eighth-note pairs (G4, A4).

28



Musical staff starting at measure 28. It begins with quarter notes G4, A4, Bb4, C5, and a quarter note G4. A wavy line labeled *trm* is above the G4. This is followed by quarter notes A4, Bb4, C5, and eighth-note pairs (A4, Bb4).

31



Musical staff starting at measure 31. It begins with eighth-note pairs (G4, A4), quarter notes Bb4, C5, and eighth-note pairs (A4, Bb4). The staff ends with a wavy line labeled *trm* above it.

34



Musical staff starting at measure 34. It begins with eighth-note pairs (G4, A4) and quarter notes Bb4, C5. A first ending bracket labeled '1.' covers the next two measures: a quarter note G4 and a whole rest. A second ending bracket labeled '2.' covers the final two measures: a quarter note G4 and a whole rest. The staff concludes with a double bar line.