

Musica <small>R</small>	
2456	
R	501

4  
7







L'ART de L'ARCHET

Contenant 30 Variations

Pour Le Violon

Avec Accompagnement de Basse - Altobitum

Composées

Sur la belle Gavotte d'Archangelo Corelli

PAR

G. TARTINI

Prix 6<sup>l</sup> »

n. 1855

A PARIS

chez BENOIT aîné, Graveur et Editeur de musique, rue Meslay 40, (au 2<sup>m</sup>)

Mus. 2456-R-501



1

*J. Benoit*





204

▽







Art. de Parchet  
Par Martini. *Andante.*

1<sup>re</sup> Varia:

2<sup>me</sup> Varia:

3<sup>me</sup> Varia:

4<sup>me</sup> Varia:

5<sup>me</sup> Varia:



6<sup>me</sup>  
Varia:

7<sup>me</sup>  
Varia:

8<sup>me</sup>  
Varia:

9<sup>me</sup>  
Varia:

10<sup>me</sup>  
Varia:

Basse  
continue



4 VIOLON

11.<sup>me</sup>  
Varia:

12.<sup>me</sup>  
Varia:

13.<sup>me</sup>  
Varia:



VIOLON

14.<sup>me</sup>  
Varia:

15.<sup>me</sup>  
Varia:

16.<sup>me</sup>  
Varia:

17.<sup>me</sup>  
Varia:

Basse  
continue



VIOLON

18.<sup>me</sup>  
Varia:

19.<sup>me</sup>  
Varia:

20.<sup>me</sup>  
Varia:

21.<sup>me</sup>  
Varia:

22.<sup>me</sup>  
Varia:



VIOLON

7

The first system of the Violon part consists of four staves. The top two staves feature complex rhythmic patterns with many sixteenth and thirty-second notes, often beamed together. The bottom two staves continue these patterns, with some trills (tr) and slurs. The music is written in a treble clef with a key signature of one flat.

23.<sup>me</sup>  
Varia:

The 23rd variation consists of two staves. The first staff begins with a trill (tr) and continues with rhythmic patterns. The second staff also features trills and rhythmic figures, ending with a double bar line. The notation includes various ornaments and slurs.

24.<sup>me</sup>  
Varia:

The 24th variation consists of two staves. The first staff starts with a trill (tr) and continues with rhythmic patterns. The second staff also features trills and rhythmic figures, ending with a double bar line. The notation includes various ornaments and slurs.

25.<sup>me</sup>  
Varia:

The 25th variation consists of two staves. The first staff starts with a trill (tr) and continues with rhythmic patterns. The second staff also features trills and rhythmic figures, ending with a double bar line. The notation includes various ornaments and slurs.

Basse  
continue

The Basse continue part consists of one staff in a bass clef. It provides a simple rhythmic accompaniment for the variations above, primarily using quarter and eighth notes. The notation includes various ornaments and slurs.



VIOLON

26.<sup>me</sup>  
Varia: 

27.<sup>me</sup>  
Varia: 

28.<sup>me</sup>  
Varia: 

29.<sup>me</sup>  
Varia: 



VIOLON



30<sup>me</sup>  
Varia:



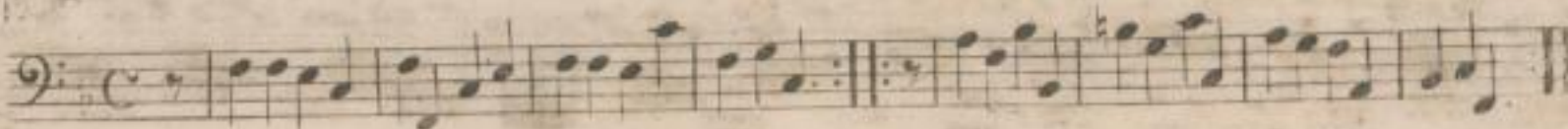
31<sup>me</sup>  
Varia:



32<sup>me</sup>  
Varia:



Basse  
continue





33.<sup>me</sup>

Varia :

34.<sup>me</sup>

Varia :

35.<sup>me</sup>

Varia :



36<sup>me</sup>  
Varia :

37<sup>me</sup>  
Varia :

38<sup>me</sup>  
Varia :

Basse  
continue



39.<sup>me</sup>  
Varia:

This section contains two staves of music. The first staff begins with a treble clef and a key signature of one flat. It features a complex, rapid sixteenth-note pattern. The second staff continues this pattern, ending with a double bar line.

40.<sup>me</sup>  
Varia:

This section contains two staves of music. The first staff continues the sixteenth-note pattern from the previous section. The second staff shows a similar pattern with some rests, ending with a double bar line.

41.<sup>me</sup>  
Varia:

This section contains three staves of music. The first staff introduces trills (tr) and triplets (3) into the sixteenth-note pattern. The second and third staves continue this more ornamented pattern, ending with a double bar line.

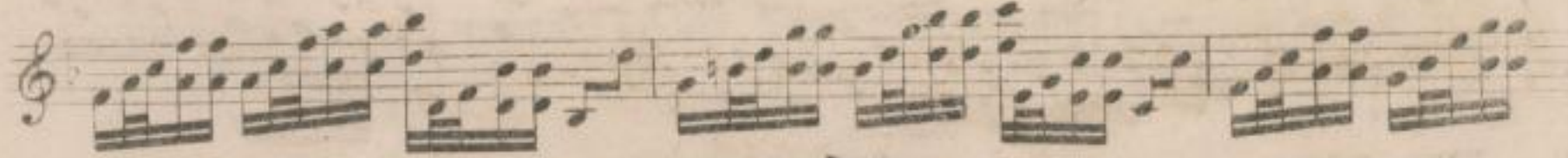
42.<sup>me</sup>  
Varia:

This section contains one staff of music, continuing the ornamented sixteenth-note pattern from the previous section, ending with a double bar line.

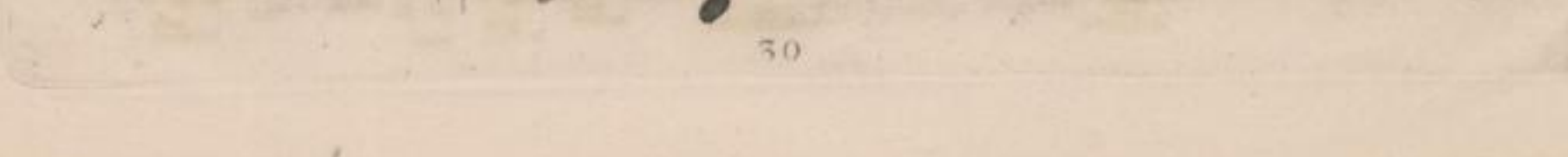
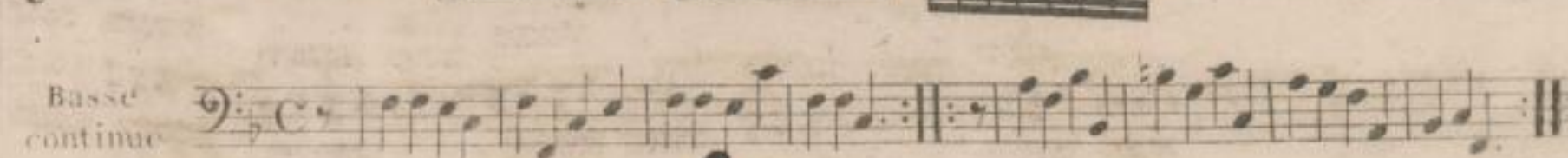
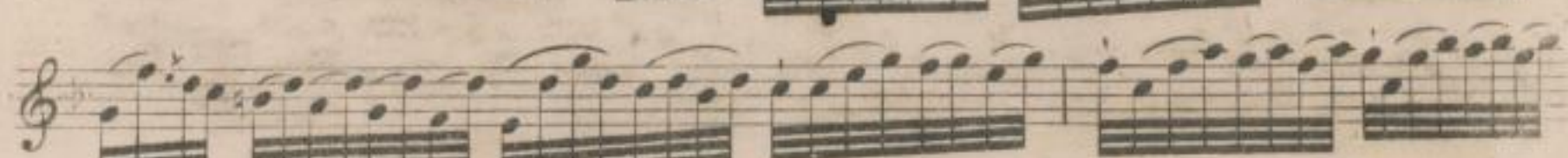
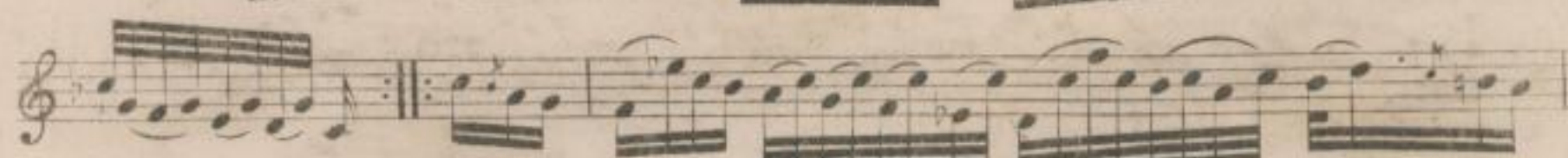
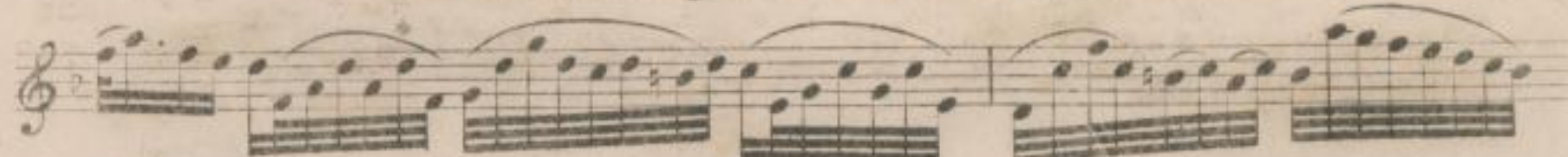
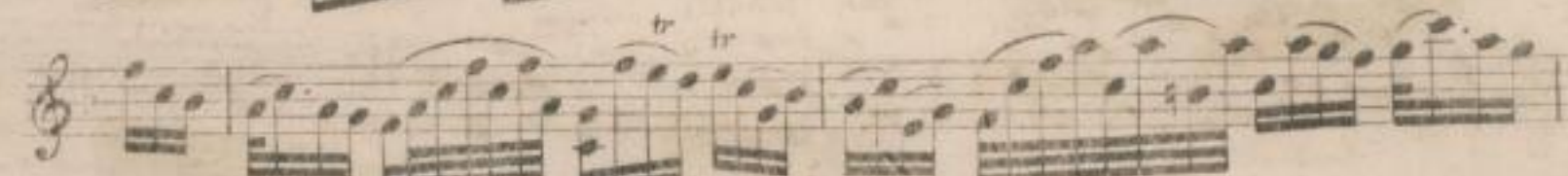




43<sup>me</sup>  
Varia:



44<sup>me</sup>  
Varia:





45.<sup>me</sup>  
Varia:

Handwritten musical notation for measures 45 and 46. The score consists of five staves of music in treble clef with a key signature of one flat. The music is characterized by rapid sixteenth-note passages, often beamed in groups of four or six, and is heavily ornamented with slurs and grace notes. The notation is dense and fills most of the staff space.

46.<sup>me</sup>  
Varia:

Handwritten musical notation for measures 47 and 48. The score consists of five staves of music in treble clef with a key signature of one flat. The music continues with rapid sixteenth-note passages and is heavily ornamented with slurs and grace notes. The notation is dense and fills most of the staff space.

47.<sup>me</sup>  
Varia:

Handwritten musical notation for measures 49 and 50. The score consists of two staves of music in treble clef with a key signature of one flat. The music continues with rapid sixteenth-note passages and is heavily ornamented with slurs and grace notes. The notation is dense and fills most of the staff space. The number 70 is written at the bottom center of the page.



48.<sup>me</sup>  
Varia:

Two systems of musical notation for measures 48 and 49. Each system consists of a treble clef staff and a bass clef staff. The music features a complex rhythmic pattern with many sixteenth notes and frequent trills, indicated by 'tr' above notes. Measure 49 ends with a double bar line and repeat dots.

49.<sup>me</sup>  
Varia:

Two systems of musical notation for measures 49 and 50. Each system consists of a treble clef staff and a bass clef staff. The music continues with a complex rhythmic pattern of sixteenth notes and trills. Measure 50 ends with a double bar line and repeat dots.

50.<sup>me</sup>  
Varia:

Two systems of musical notation for measures 50 and 51. Each system consists of a treble clef staff and a bass clef staff. The music continues with a complex rhythmic pattern of sixteenth notes and trills. Measure 51 ends with a double bar line and repeat dots. The word "Fine" is written at the end of the second staff.

Basse  
continue

A single system of musical notation for the Basse continue. It consists of a bass clef staff with a common time signature (C). The music is a simple, steady accompaniment consisting of quarter notes.



14

Mus Q 4846



Städtische Bücherei und Lesehalle

~~Leihfrist bis zum:~~


-40<sup>0</sup> Datum der Benutzung

24. Aug. 64

03. Juni 1988

Vordruck 787. Kostf. Baser. 16, 10, 26. 20000.



SLUB DRESDEN  
  
3 3020284

[Faint, illegible text on a small white label on the right edge of the book cover]