

Altblockflöte f' II

(Querflöte, Oboe, Violine)

Sieben Suiten

689100

Heft II

SUITE IV

12. Preludio

J. B. Bononcini
c. 1660 - c. 1750

Musical score for the 12. Preludio, Suite IV. It consists of four staves of music in treble clef with a 3/4 time signature. The first staff begins with a treble clef and a 3/4 time signature. The second staff has first and second endings. The third and fourth staves continue the melodic line with various ornaments and articulations.

13. Corrente

Musical score for the 13. Corrente, Suite IV. It consists of three staves of music in treble clef with a 6/4 time signature. The first staff begins with a treble clef and a 6/4 time signature. The second and third staves continue the melodic line with various ornaments and articulations.

14. Allemanda

Musical score for the 14. Allemanda, Suite IV. It consists of three staves of music in treble clef with a 3/4 time signature. The first staff begins with a treble clef and a 3/4 time signature. The second and third staves have first and second endings.

Ann: Die Zeichen (w) und Artikulationsbögen sind hinzugefügt. Die originalen Bögen sind durch stärkere Bögen gekennzeichnet.

15. Corrente

Musical score for Corrente, measures 1-16. The piece is in 6/4 time and B-flat major. It features a melodic line with eighth and sixteenth notes, including slurs and ties. The score concludes with a double bar line and repeat dots.

SUITE V

16. Allemanda

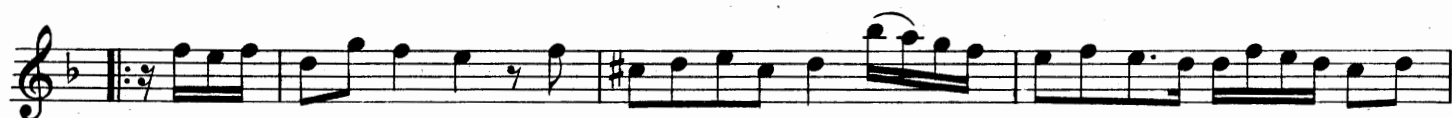
Musical score for Allemanda, measures 1-16. The piece is in 3/4 time and B-flat major. It features a rhythmic melody with eighth and sixteenth notes, including slurs and ties. The score concludes with a double bar line and repeat dots.

17. Sarabanda

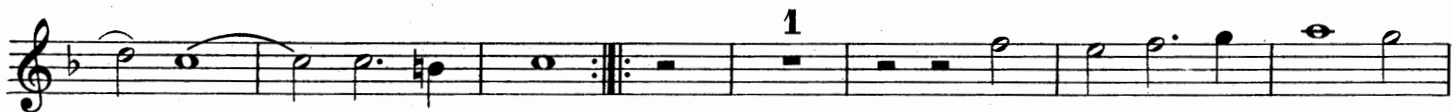
Musical score for Sarabanda, measures 1-16. The piece is in 3/4 time and B-flat major. It features a slow, melodic line with quarter and eighth notes, including slurs and ties. The score concludes with a double bar line and repeat dots.

18. Allemanda

Musical score for Allemanda, measures 1-16. The piece is in 3/4 time and B-flat major. It features a rhythmic melody with eighth and sixteenth notes, including slurs and ties. The score concludes with a double bar line and repeat dots.



19. Sarabanda



SUITE VI

20. Allemanda



21. Aria



22. Corrente

Musical score for Corrente, measures 1-16. The piece is in 6/4 time and G major. It consists of four staves of music. The first staff begins with a treble clef and a key signature of one sharp (F#). The melody is characterized by a steady eighth-note rhythm. The second staff ends with a repeat sign. The third staff begins with a repeat sign. The fourth staff ends with a repeat sign.

SUITE VII

23. Preludio

Musical score for Preludio, measures 1-24. The piece is in 3/4 time and G major. It consists of six staves of music. The first staff begins with a treble clef and a key signature of one sharp (F#). The melody features a mix of eighth and sixteenth notes. The second staff contains a series of sixteenth-note runs. The third staff ends with a repeat sign. The fourth staff continues the melodic line. The fifth staff features a series of eighth-note runs. The sixth staff ends with a repeat sign.

24. Giga

Musical score for Giga, measures 1-16. The piece is in 6/4 time and G major. It consists of four staves of music. The first staff begins with a treble clef and a key signature of one sharp (F#). The melody is characterized by a steady eighth-note rhythm. The second staff continues the melodic line. The third staff ends with a repeat sign. The fourth staff continues the melodic line and ends with a repeat sign.