

180210
A Buchanan

XXIV

MENUETTOS

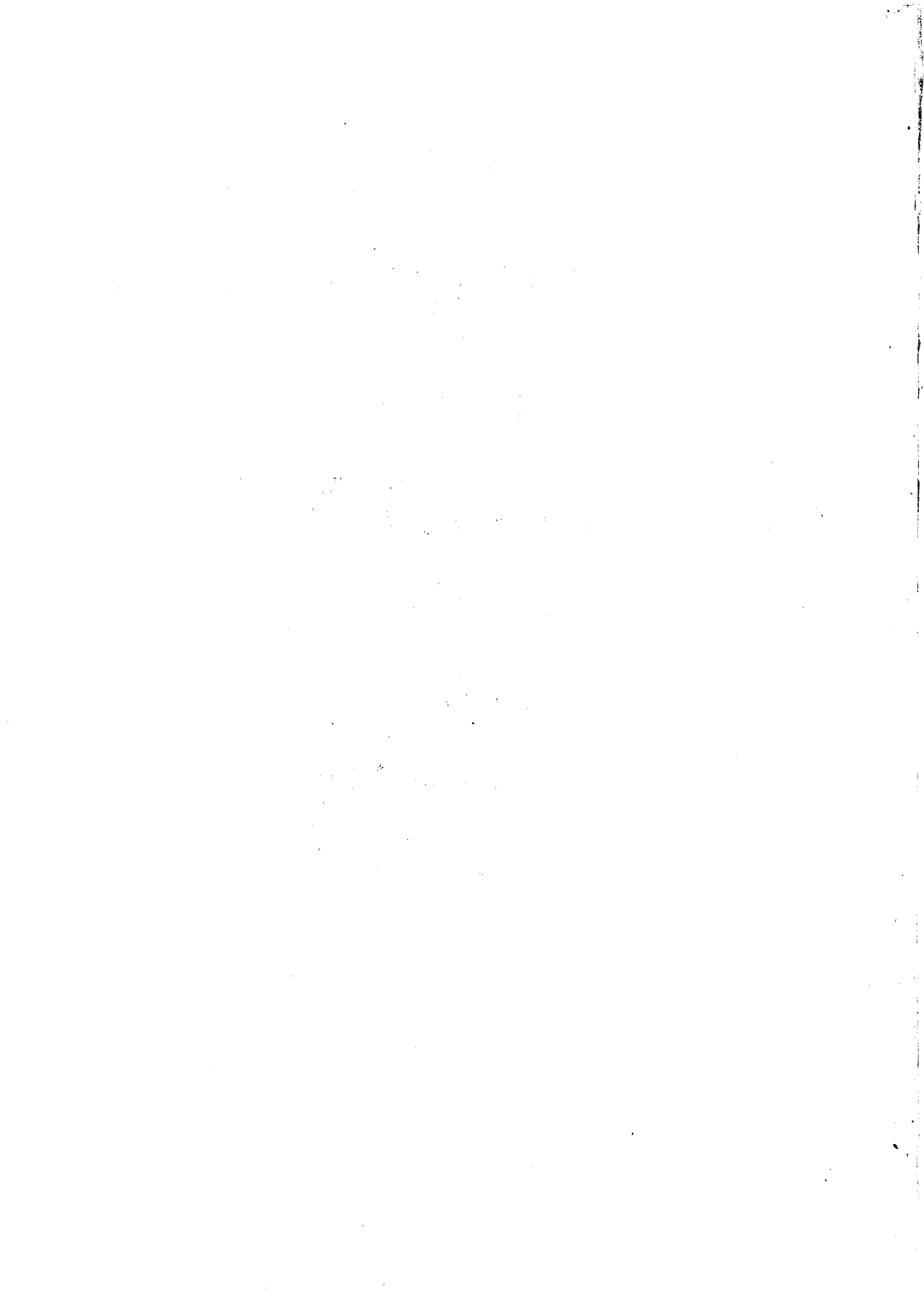
For two

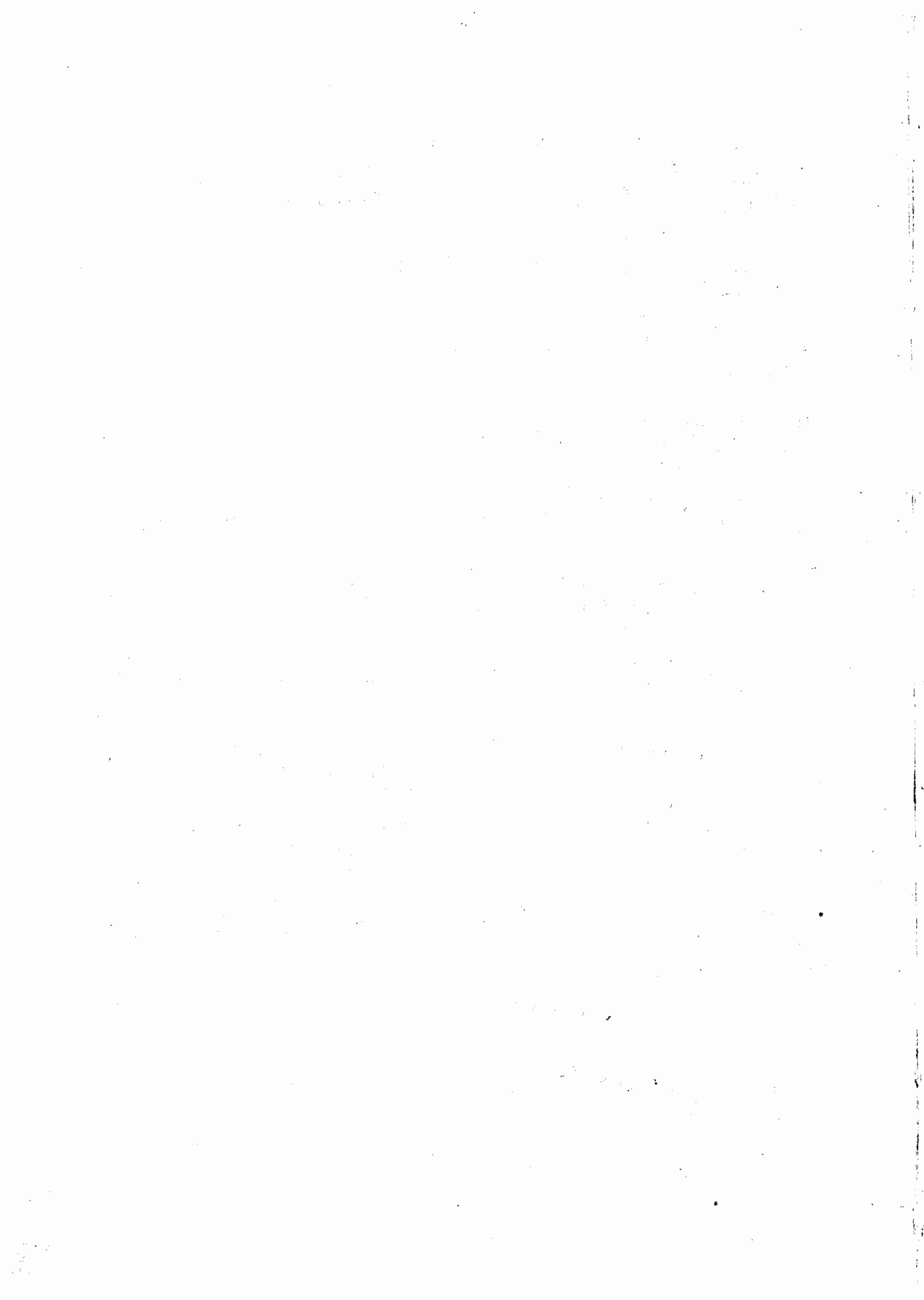
VIOLINS

and a

Bass
Compos'd by
F. Schwindl

*Printed, for A. Hummell in King Street
St. Ann's Scho. facing Nassau Street.*





BASSO

Menuetto 1

Menuetto 2

Menuetto 3

Menuetto 4

Menuetto 5

Menuetto 6

BASSO

Menuetto 7 Musical notation for Menuetto 7, first staff. Treble clef, key signature of one sharp (F#), 3/4 time signature. The melody consists of eighth and sixteenth notes, ending with a double bar line and repeat signs.

Musical notation for Menuetto 7, second staff. Treble clef, key signature of one sharp (F#), 3/4 time signature. The accompaniment consists of eighth and sixteenth notes, ending with a double bar line and repeat signs.

Menuetto 8 Musical notation for Menuetto 8, first staff. Treble clef, key signature of one sharp (F#), 3/4 time signature. The melody consists of eighth and sixteenth notes, ending with a double bar line and repeat signs.

Musical notation for Menuetto 8, second staff. Treble clef, key signature of one sharp (F#), 3/4 time signature. The accompaniment consists of eighth and sixteenth notes, ending with a double bar line and repeat signs.

Menuetto 9 Musical notation for Menuetto 9, first staff. Treble clef, key signature of one sharp (F#), 3/4 time signature. The melody consists of eighth and sixteenth notes, ending with a double bar line and repeat signs.

Musical notation for Menuetto 9, second staff. Treble clef, key signature of one sharp (F#), 3/4 time signature. The accompaniment consists of eighth and sixteenth notes, ending with a double bar line and repeat signs.

Menuetto 10 Musical notation for Menuetto 10, first staff. Treble clef, key signature of one sharp (F#), 3/4 time signature. The melody consists of eighth and sixteenth notes, ending with a double bar line and repeat signs.

Musical notation for Menuetto 10, second staff. Treble clef, key signature of one sharp (F#), 3/4 time signature. The accompaniment consists of eighth and sixteenth notes, ending with a double bar line and repeat signs.

Menuetto 11 Musical notation for Menuetto 11, first staff. Treble clef, key signature of one sharp (F#), 3/4 time signature. The melody consists of eighth and sixteenth notes, ending with a double bar line and repeat signs.

Musical notation for Menuetto 11, second staff. Treble clef, key signature of one sharp (F#), 3/4 time signature. The accompaniment consists of eighth and sixteenth notes, ending with a double bar line and repeat signs.

Menuetto 12 Musical notation for Menuetto 12, first staff. Treble clef, key signature of one sharp (F#), 3/4 time signature. The melody consists of eighth and sixteenth notes, ending with a double bar line and repeat signs.

Musical notation for Menuetto 12, second staff. Treble clef, key signature of one sharp (F#), 3/4 time signature. The accompaniment consists of eighth and sixteenth notes, ending with a double bar line and repeat signs.

BASSO

Menuetto 13 Musical notation for Menuetto 13, first staff. Treble clef, key signature of one sharp (F#), 3/4 time signature. The melody begins with a quarter note G4, followed by eighth notes A4-B4-C5, and continues with a series of eighth and quarter notes.

Musical notation for Menuetto 13, second staff. Bass clef, key signature of one sharp (F#), 3/4 time signature. The accompaniment consists of a steady eighth-note bass line.

Menuetto 14 Musical notation for Menuetto 14, first staff. Treble clef, key signature of one flat (Bb), 3/4 time signature. The melody starts with a quarter note G3, followed by eighth notes A3-B3-C4.

Musical notation for Menuetto 14, second staff. Bass clef, key signature of one flat (Bb), 3/4 time signature. The accompaniment features a steady eighth-note bass line.

Menuetto 15 Musical notation for Menuetto 15, first staff. Treble clef, key signature of one sharp (F#), 3/4 time signature. The melody begins with a quarter note G4, followed by eighth notes A4-B4-C5.

Musical notation for Menuetto 15, second staff. Bass clef, key signature of one sharp (F#), 3/4 time signature. The accompaniment consists of a steady eighth-note bass line.

Menuetto 16 Musical notation for Menuetto 16, first staff. Treble clef, key signature of one sharp (F#), 3/4 time signature. The melody starts with a quarter note G4, followed by eighth notes A4-B4-C5.

Musical notation for Menuetto 16, second staff. Bass clef, key signature of one sharp (F#), 3/4 time signature. The accompaniment features a steady eighth-note bass line.

Menuetto 17 Musical notation for Menuetto 17, first staff. Treble clef, key signature of two sharps (F# and C#), 3/4 time signature. The melody begins with a quarter note G4, followed by eighth notes A4-B4-C5.

Musical notation for Menuetto 17, second staff. Bass clef, key signature of two sharps (F# and C#), 3/4 time signature. The accompaniment consists of a steady eighth-note bass line.

Menuetto 18 Musical notation for Menuetto 18, first staff. Treble clef, key signature of two sharps (F# and C#), 3/4 time signature. The melody starts with a quarter note G4, followed by eighth notes A4-B4-C5.

Musical notation for Menuetto 18, second staff. Bass clef, key signature of two sharps (F# and C#), 3/4 time signature. The accompaniment features a steady eighth-note bass line.


BASSO

Menuetto 19 



Menuetto 20 




Menuetto 21 



Menuetto 22 



Menuetto 23 



Menuetto 24 



