

Viola da gamba

Fagott

Violoncello

SONATA I

Joh. Chr. Schickhardt
(um 1680-1740)

Un poco vivace

Baß

Vivace

Allemande
Allegro

Sarabande

Adagio

First system of the Sarabande, Adagio. It consists of three staves of music in bass clef, 3/4 time signature, and B-flat major key. The first staff begins with a whole note chord, followed by a series of eighth and sixteenth notes. The second staff continues with a melodic line featuring a sharp sign above the first few notes. The third staff concludes the system with a double bar line and repeat dots.

Gigue

Second system of the Gigue. It consists of five staves of music in bass clef, 3/8 time signature, and B-flat major key. The first staff starts with a dotted half note followed by eighth notes. The second staff features a rhythmic pattern of eighth notes with a sharp sign above. The third staff contains a complex rhythmic figure with many sixteenth notes. The fourth staff continues with similar rhythmic patterns. The fifth staff ends with a double bar line and repeat dots, and includes a piano (*p*) dynamic marking below the first few notes.

SONATA II

Allemande
AllegroJoh. Chr. Schickhardt
(um 1680 - 1740)

Allegro

Sarabande
Adagio

Entrée



Menuett



Trio

*Menuet da Capo*

Gigue



Gavott

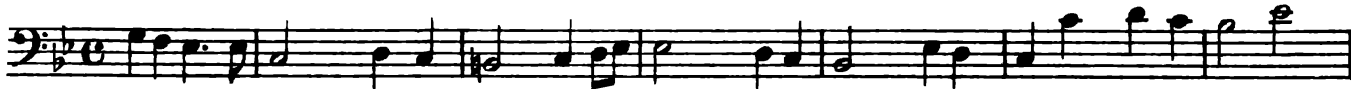


SONATA III

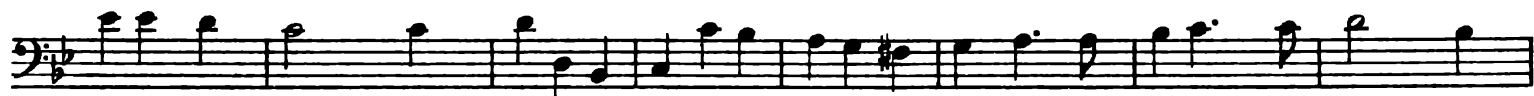
Joh. Chr. Schickhardt
(um 1680-1740)

Un poco vivace

Baß

Allemande
Allegro

Adagio



Corrente Allegro

Five staves of musical notation for the piece 'Corrente, Allegro'. The notation is in bass clef with a key signature of two flats (B-flat and E-flat) and a 3/4 time signature. The music features a mix of eighth and sixteenth notes, with some triplet markings. The first staff begins with a treble clef and a 3/4 time signature. The piece concludes with a double bar line and repeat dots.

Gigue

Five staves of musical notation for the piece 'Gigue'. The notation is in bass clef with a key signature of two flats (B-flat and E-flat) and a 6/8 time signature. The music is characterized by a rhythmic pattern of eighth and sixteenth notes, often grouped in pairs or groups of four. The first staff begins with a treble clef and a 6/8 time signature. The piece concludes with a double bar line and repeat dots.

Menuet

Two staves of musical notation for the piece 'Menuet'. The notation is in bass clef with a key signature of two flats (B-flat and E-flat) and a 3/4 time signature. The music consists of a simple, elegant melody primarily using quarter and eighth notes. The first staff begins with a treble clef and a 3/4 time signature. The piece concludes with a double bar line and repeat dots.

SONATA IV

Joh. Chr. Schickhardt
(um 1680-1740)

Andante

Baß

Musical score for the Andante section, bass clef. The score consists of five staves of music. The first staff begins with a bass clef and a common time signature. The music is written in a key with two flats (B-flat and E-flat). The tempo is marked 'Andante'. The score includes various rhythmic values, including eighth and sixteenth notes, and rests. A dynamic marking 'p' (piano) is present at the end of the fifth staff.

Allegro

Musical score for the Allegro section, bass clef. The score consists of three staves of music. The first staff begins with a bass clef and a common time signature. The music is written in the same key as the Andante section. The tempo is marked 'Allegro'. The score includes various rhythmic values, including eighth and sixteenth notes, and rests. The section concludes with a double bar line and repeat dots.

Più vivace

Musical score for the 'Più vivace' section, consisting of seven staves of bass clef notation. The first staff begins with a treble clef and a key signature of one sharp (F#), then changes to a bass clef. Dynamics include *p* (piano) and *f* (forte). The piece concludes with a double bar line and repeat dots.

Adagio

Allegro

Musical score for the 'Adagio' and 'Allegro' sections, consisting of five staves of bass clef notation. The first staff is marked 'Adagio' and the second 'Allegro'. Dynamics include *f* (forte) and *p* (piano). The piece concludes with a double bar line and repeat dots.

SONATA V

Joh. Chr. Schickhardt
(um 1680 - 1740)

Adagio

Baß

Musical score for the Adagio section of Sonata V, bass line. The score is written in bass clef with a key signature of one sharp (F#) and a common time signature (C). It consists of four staves of music. The first staff begins with a treble clef and a common time signature, followed by a bass clef and a common time signature. The music is characterized by a slow, steady pace with a mix of quarter and eighth notes, some with slurs. A dynamic marking of *p* (piano) is present in the third staff.

Allegro

Musical score for the Allegro section of Sonata V, bass line. The score is written in bass clef with a key signature of one sharp (F#) and a common time signature (C). It consists of four staves of music. The first staff begins with a treble clef and a common time signature, followed by a bass clef and a common time signature. The music is characterized by a faster, more rhythmic pace with a mix of quarter and eighth notes, some with slurs. The section concludes with a double bar line and repeat dots.

Adagio

Three staves of musical notation in bass clef, 3/4 time signature. The first staff begins with a treble clef and a key signature of one sharp (F#). The music is characterized by a slow tempo and features a mix of quarter notes, eighth notes, and sixteenth notes, with some passages including triplets.

Grave

A single staff of musical notation in bass clef, 6/8 time signature. The tempo is marked as Grave. The music consists of a few measures of music, including a double bar line and a repeat sign.

Allegro

Four staves of musical notation in bass clef, 6/8 time signature. The tempo is marked as Allegro. The music is more rhythmic and features a variety of note values, including eighth and sixteenth notes, with some rests.

Menuett

Three staves of musical notation in bass clef, 3/4 time signature. The tempo is marked as Menuett. The music is in a 3/4 time signature and features a mix of quarter notes and eighth notes, with some passages including triplets.

SONATA VI

Joh. Chr. Schickhardt
(um 1680 - 1740)

Allegro

Baß



Adagio



Grave Pianissimo



Presto



Gigue

Musical score for Gigue, bass clef, 6/8 time signature. The piece consists of four staves of music. The first staff begins with a treble clef and a key signature of one flat (B-flat). The second staff continues the melody. The third staff features a repeat sign and a key signature change to two flats (B-flat and E-flat). The fourth staff concludes the piece with a double bar line and repeat dots.

Allegro

Musical score for Allegro, bass clef, common time signature. The piece consists of three staves of music. The first staff begins with a treble clef and a key signature of one flat (B-flat). The second staff continues the melody. The third staff concludes the piece with a double bar line and repeat dots.

Menuett

Musical score for Menuett, bass clef, 3/4 time signature. The piece consists of two staves of music. The first staff begins with a treble clef and a key signature of one flat (B-flat). The second staff concludes the piece with a double bar line and repeat dots.