

V.C.

CELLO

452.4
R. G. B. S. G.
NO. 5
PT. 3

STRING SONATA NO 5

ROSSINI

Allegro vivace

10

20

30

40

50

1

V.S.

2.

#5 v.c.

(1) 60

110 70 Solo.

80

sim.

Tutti 90

mf

100

f

f

110

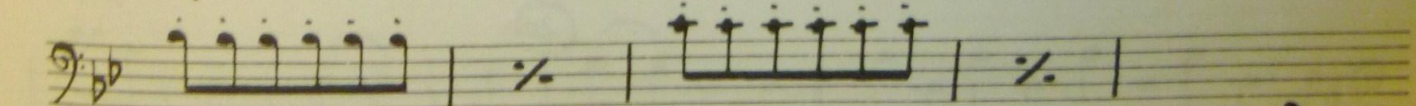
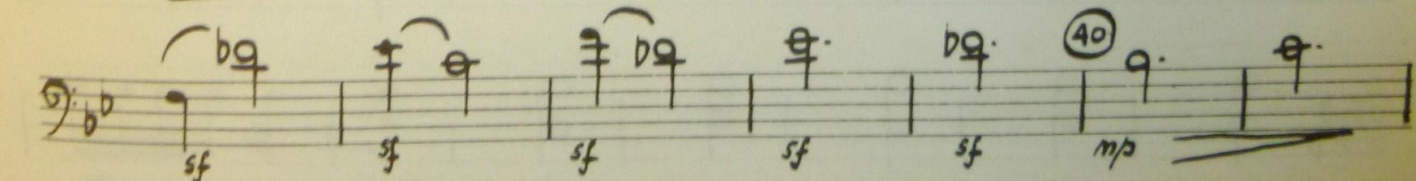
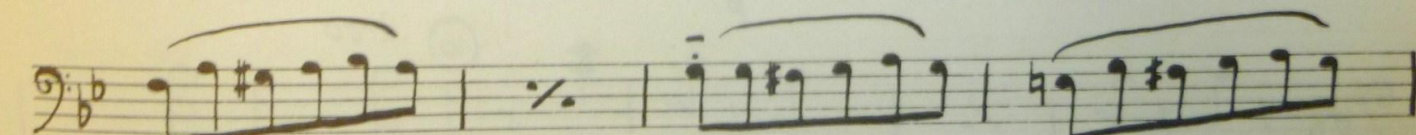
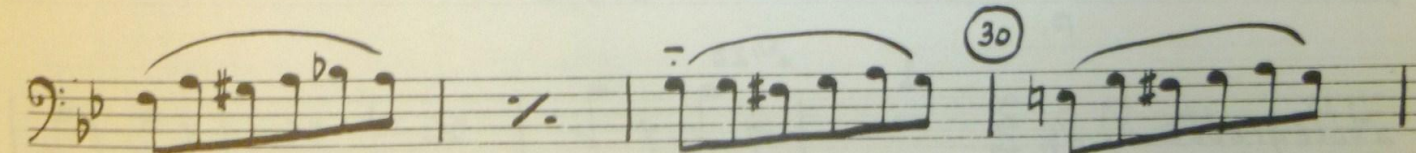
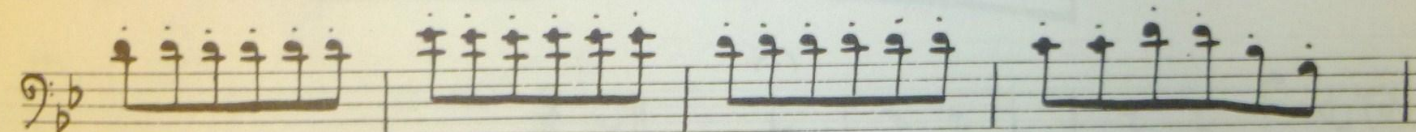
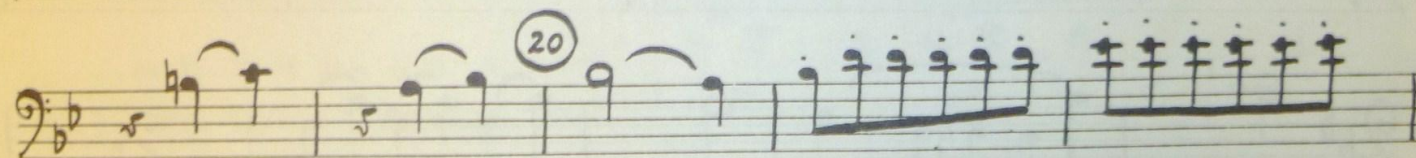
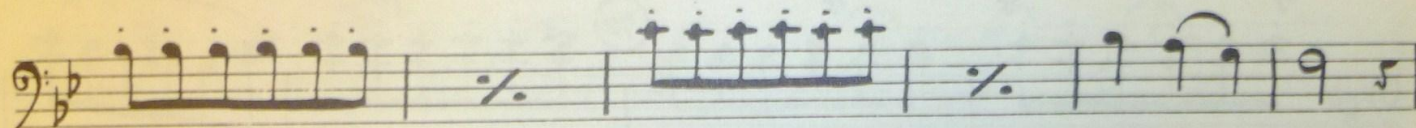
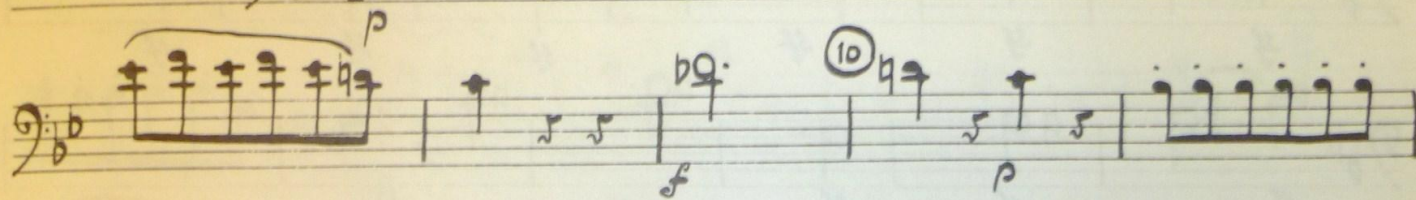
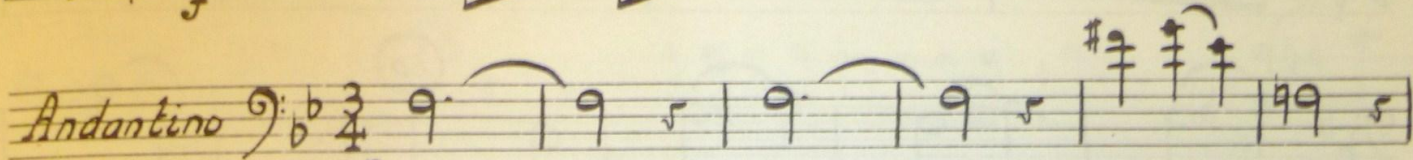
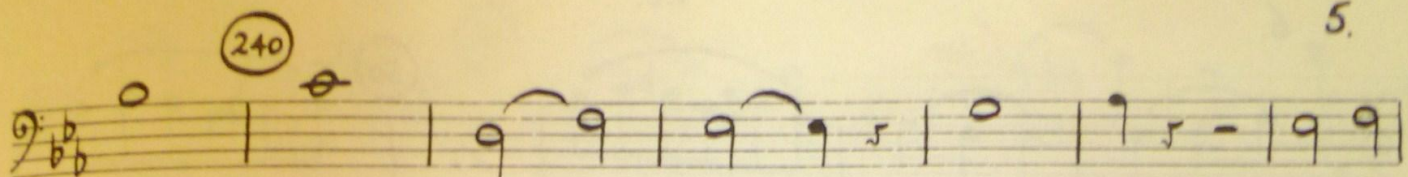
p

Handwritten musical score for a single voice part, numbered #5 v.c. The score consists of ten staves of music in bass clef with a key signature of two flats (B-flat and E-flat). The music features various rhythmic patterns, including eighth and sixteenth notes, and rests. Dynamic markings such as *sf* (sforzando), *p* (piano), and *V* (accents) are used throughout. Measure numbers 120, 130, 140, 150, 160, and 170 are circled. The score concludes with a double bar line and a fermata over the final note.

V.S.

Two sets of empty musical staves at the bottom of the page, intended for a second voice part (V.S.).

Handwritten musical score for Violin Concerto #5, page 4. The score is written on ten staves. It begins with a first ending bracket [1] and a circled measure number 180. The music features a "Solo" section with intricate sixteenth-note passages. Measure numbers 190, 200, 210, 220, and 230 are circled. Performance markings include "Tutti", "mf", "sf", and "sim:". The score concludes with a double bar line and repeat signs.



V. S. # (no rest)

6.

Handwritten musical score for the first system, measures 1-10. The music is in bass clef with a key signature of two flats (B-flat and E-flat). It features a melodic line with slurs and a bass line with chords and slurs. Measure 5 contains a circled number 50. Dynamic markings include *sf* (sforzando) and *p* (piano).

Handwritten musical score for the second system, measures 11-14. The music continues in the same key signature and clef. Measure 11 has a circled number 70. The system ends with a double bar line and a key signature change to one flat (B-flat).

Handwritten musical score for the third system, measures 15-19. The music is in bass clef with a key signature of one flat (B-flat) and a 2/4 time signature. It includes the tempo marking *Allegretto*. Measure 15 has a circled number 10. Performance instructions include *pizz.* (pizzicato) and *Arco* (arco). Dynamic markings include *p* (piano) and *mf* (mezzo-forte).

Handwritten musical score for the fourth system, measures 20-24. The music continues in the same key signature and clef. Measure 20 has a circled number 20. The system concludes with a double bar line.

#5 v.c.

Handwritten musical notation on a single staff in bass clef with a key signature of two flats (B-flat and E-flat). The music begins with a treble clef and a common time signature. A circled number '30' is written above the staff. The notation includes quarter notes, eighth notes, and beamed eighth notes, with some notes tied across bar lines.

Handwritten musical notation on a single staff in bass clef with a key signature of two flats. The notation continues with quarter and eighth notes, some beamed together.

Handwritten musical notation on a single staff in bass clef with a key signature of two flats. A circled number '40' is written above the staff. The notation features a series of beamed eighth notes, followed by quarter notes. Dynamic markings 'f' and 'mp' are present below the staff.

Handwritten musical notation on a single staff in bass clef with a key signature of two flats. The notation consists of quarter and eighth notes.

Handwritten musical notation on a single staff in bass clef with a key signature of two flats. A circled number '50' is written above the staff. The notation includes quarter and eighth notes, with some beaming.

Handwritten musical notation on a single staff in bass clef with a key signature of two flats. The notation features a series of beamed eighth notes, followed by quarter notes. Dynamic markings 'f' and 'mf' are present below the staff.

Handwritten musical notation on a single staff in bass clef with a key signature of two flats. A circled number '60' is written above the staff. The notation shows a quarter note followed by a double bar line and a fermata.

v.s.

Four empty musical staves in bass clef with a key signature of two flats, intended for a second voice part.

[2]

70 *Pizz*
f

Arco 80

90 *mf*

100 *f*

110 *Pizz*
f

120 *Arco*