

QUINTETTE

PIANO, 2 VIOLONS, ALTO ET VIOLONCELLE

EMILE RATEZ

Op. 31

I

Allegro moderato.

1^{er} VIOLON

1^{er} VIOLON

9 ALTO

3 1 2 3 4 5

p

mf *p* *p*

4 3 3 3 8 2^d VIOLON

1^{er} VIOLON

4 B

f *Cresc.* *p*

1 1 2

f *p* *p* *p*

C

3 3

3 2 4 4 1 2 3

p *p*

4 5 1 2 3

4

pp

D 2

Tous droits d'Exécution réservés.

1^{re} VIOLON

First musical staff, starting with a piano (*p*) dynamic. It features a melodic line with slurs and a fermata over a whole note. A finger number '2' is written above the staff.

Second musical staff, starting with a mezzo-forte (*mf*) dynamic. It includes a *Cresc* (crescendo) marking and ends with a forte (*f*) dynamic. A finger number '1' is written above the staff.

Third musical staff, starting with a forte (*f*) dynamic. It contains several triplet markings (indicated by a '3' above the notes).

Fourth musical staff, continuing the melodic line with triplet markings.

Fifth musical staff, featuring triplet markings and a *Cresc. molto.* (crescendo molto) marking.

Sixth musical staff, starting with a fortissimo (*ff*) dynamic. It contains a series of chords with fingerings 1 through 5 indicated above.

Seventh musical staff, continuing the chordal texture with fingerings 1 through 8 indicated above.

Eighth musical staff, continuing the chordal texture with fingerings 2 through 6, and ending with a mezzo-piano (*mp*) dynamic. A chord symbol 'E' is written above.

Ninth musical staff, continuing the chordal texture with fingerings 2 through 5, and ending with a forte (*f*) dynamic. A chord symbol 'b2' is written above.

Tenth musical staff, starting with a piano (*p*) dynamic. It includes a chord symbol 'F' and a finger number '4' written above.

1^{er} VIOLON

8
Cresc. *f*

f *p* *f*

Più mosso.

p *sf* Cresc.

sf Cresc. *f*

f sempre

p

sf Cresc. *sf*

f

II

Moderato.

The musical score for Violin II, Moderato, page 4, is written in 2/4 time and B-flat major. It consists of 11 staves of music. The first staff begins with a dynamic of *p* and a second-measure rest. The music features a variety of rhythmic patterns, including eighth and sixteenth notes, and rests. A trill (*tr*) is marked in the third staff, followed by a dynamic change to *f*. The fourth staff includes a pizzicato (*Pizz.*) section and an arco (*Arco.*) section with a dynamic of *p*. The fifth staff contains a triplet of eighth notes. The sixth staff also features a triplet and a pizzicato (*Pizz.*) instruction. The seventh staff has a dynamic of *f* and a triplet. The eighth staff includes a dynamic of *p* and a triplet. The ninth staff has a dynamic of *f* and a triplet. The tenth staff includes a dynamic of *mp* and a triplet. The eleventh staff concludes with a double bar line and the number 11.

The musical score for the first violin on page 5 is written in G major (one sharp) and 2/4 time. It consists of 12 staves of music. The score includes various performance instructions and dynamic markings:

- Staff 1:** Starts with a first finger (**I**) *Pizz.* (pizzicato) section, followed by an *Arco.* (arco) section.
- Staff 2:** Features a *p* (piano) dynamic marking and a *Cresc.* (crescendo) instruction.
- Staff 3:** Includes a *mf* (mezzo-forte) dynamic marking and a triplet of eighth notes.
- Staff 4:** Shows *mf* dynamics and a *p* dynamic marking.
- Staff 5:** Features a *Cresc.* instruction.
- Staff 6:** Includes a *f* (forte) dynamic marking and an articulation mark **K**.
- Staff 7:** Contains a triplet of eighth notes.
- Staff 8:** Ends with an articulation mark **L**.
- Staff 9:** Features a *4* (fourth finger) fingering and a *Dim.* (diminuendo) instruction.
- Staff 10:** Starts with a *p* dynamic marking.
- Staff 11:** Continues the melodic line.
- Staff 12:** Ends with a *Pizz.* section, a *p* dynamic marking, an *Arco.* section, and a first finger (**1**) *Pizz.* section.

III

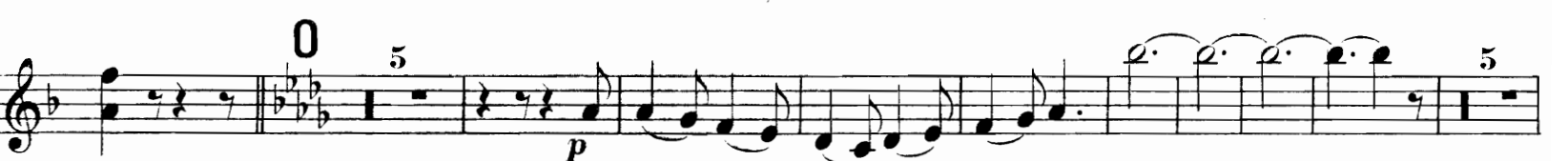
Lento, funebre.

The musical score for the first violin part of movement III, 'Lento, funebre.', consists of ten staves. The first staff begins with a treble clef, a key signature of one flat (B-flat), and a common time signature (C). The tempo and mood are indicated as 'Lento, funebre.' and the dynamic is *p*. The music features a series of eighth-note patterns with rests, including triplet and quartet markings. The second staff continues this pattern. The third staff shows a key change to two sharps (F# and C#) and includes a measure marked '17' with a double bar line. The dynamic is *mf*. The fourth staff continues with dynamics *f* and *ff*, and includes a triplet marking. The fifth staff features a *pizzicato* section with dynamics *p*, *p*, and *pp*, followed by an *arco* section with dynamics *P Dolce*. The sixth and seventh staves continue the melodic line. The eighth staff includes a measure marked '5' and the instruction 'Mettez la sourdine.' with a dynamic of *p*. The ninth staff ends with the instruction 'Perdendosi.' and a dynamic of *p*. The tenth staff concludes the movement.

IV

Allegro assai quasi presto.

The musical score for the first violin part of movement IV, 'Allegro assai quasi presto.', consists of two staves. The first staff begins with a treble clef, a key signature of one flat (B-flat), and a 6/8 time signature. The tempo is indicated as 'Allegro assai quasi presto.' and the dynamic is *f*. The music features a rhythmic pattern of eighth notes with rests. The second staff continues this pattern, including a key change to two sharps (F# and C#).



1^{re} VIOLON

mf

Cresc.

f

f

mf

Cresc.

ff

f

R

1 2 3 4

p

1

p

1

pp

1

Pizz.

S 1 Arco. 4 5 Rall.

A tempo. 2^d VIOLON 1^{er} VIOLON

Cresc. f

f Cresc. f

Più mosso. PIANO 1^{er} VIOLON

T

ff p p

Cresc. p

U Encore plus vite. 3

2^d VIOLON 1^{er} VIOLON f

Cresc.

tr. tr. tr. tr. tr. ff ff ff