

VIOLONCELLO

Carl Nielsen  
Symphony No. 5

2

Tempo giusto  $\text{♩} = 100$

11 11 10

1 2 I  
Cor. in F

3 5 4 1  
Vla. *f* *dim.* *pp*  
con sord.

2 3 4 5 6 7 8 9 10

11 12 5  
*p* *p* *mp* *mf*

2 6 1  
*p* *molto dim.* *PPP*

2 2

7 8 5  
*mfz* *fp* *fp* *sffz* *p* *fz*

9 5  
*p* *fp* *molto dim.* *PPP*

10 1 1  
*pp* *f* *senza sord.* *f* *pizz.*

1 - 49 11 2 3 4 5 6 7 8 9 10 11

*f* sempre *ff* sempre

VIOLONCELLO

12 13 14 15 16 17 18 19 20 21 22 23

*ff sempre f sempre f sempre sempre ff*

24 25 26 27 28 29 30 31 32 33 34

*ff sempre ff sempre*

35 36 37 38 39 40 41 42 43

*f dim.*

44 45 46 47 48 49

*f dim.*

*poco a poco tranqu.* 16 *Tranquillo*

*ppp arco ffz mp fz*

17

*fz mf fz*

18

*fz mf ffz mf fz*

19

*fz mf fz mf fz mf*

20

*ffz mf fz mf ffz mf*

21

*ffz mf fz mf fz*

5

*mp dim. molto ppp*

VIOLONCELLO

4

Musical score for Violoncello, measures 21-25. The score is written in bass clef with a key signature of two flats. It features various dynamics including *ffz*, *sempref*, *fz*, *mf*, *p*, and *ffz*. There are also markings for *cresc.* and *pp*. Measure numbers 22, 23, 24, and 25 are indicated in boxes. The music includes triplets and slurs.

*Adagio non troppo*

Piano accompaniment for measures 21-25. The score is written in bass clef with a key signature of two flats. It includes dynamics such as *div mf* and *p*. The music features a steady accompaniment with some melodic lines.

Musical score for Violoncello, measures 26-30. The score is written in bass clef with a key signature of two flats. It includes dynamics such as *p* and *mp*. There are markings for *espr.* and *pp*. Measure numbers 26, 27, 28, 29, and 30 are indicated in boxes. The music includes slurs and accents.

(*poco pesante*).

VIOLONCELLO

Measures 27 and 28 of the cello part. Measure 27 features a melodic line with a *v* (vibrato) marking and a *mp* dynamic. Measure 28 continues the melodic line with a *nall.* (rallentando) marking and a *mp* dynamic. The bottom staff shows a supporting bass line.

Measures 28 and 29. Measure 28 continues the melodic line with a *mp* dynamic. Measure 29 features a melodic line with a *v* marking and a *f* dynamic. The bottom staff shows a supporting bass line.

Measure 29, continuing the melodic line with a *v* marking and a *f* dynamic. The bottom staff shows a supporting bass line.

Measure 29, continuing the melodic line with a *v* marking and a *ff* dynamic. The bottom staff shows a supporting bass line.

Measure 30, continuing the melodic line with a *v* marking and a *fz* dynamic. The bottom staff shows a supporting bass line.

Measure 30, continuing the melodic line with a *v* marking and a *dim.* dynamic. The bottom staff shows a supporting bass line.

Measure 31, continuing the melodic line with a *v* marking and a *quasi rall.* marking. The bottom staff shows a supporting bass line.

Measure 32, continuing the melodic line with a *v* marking and a *dim.* dynamic. The bottom staff shows a supporting bass line.

Measure 33, continuing the melodic line with a *v* marking and a *cresc.* dynamic. The bottom staff shows a supporting bass line.

**VOLONCELLO**

6

*ff* *V* *pp* *ff* *pp*

[34] 1 2

*pp* *ff* *pp*

[35] *ff* *sempre ff* *sempre ff*

*simile*

[36] 1

[37] *fff*

[38] *dim.*

*Tranquillo* [39] *dim.* *ppp* *dim.* *pppp*

*dim.* *pp* *ppp* *dim.* *pppp*

VIOLONCELLO

Allegro  $\text{♩} = 72-76$

II

7

*f fz*

*f*

*ff*

*mf* *p* *cresc.*

*f*

*dim.* *p* *p cant.*

*f* *pp spicc.*

*cresc.*

*molto cresc.* *ff*

G.P. 1

VOLONCELLO

*ff* *marc.* *marc.*

50 *f cant.*

*cresc.* 51 *ff fz*

*fz fz* *V*

52 *ppp* *f*

*dim.* *p*

*dim.* *molto dim.*

*ppp* *sempre ppp*

53 *sempre spicc.*

54 *sempre ppp*

VIOLONCELLO



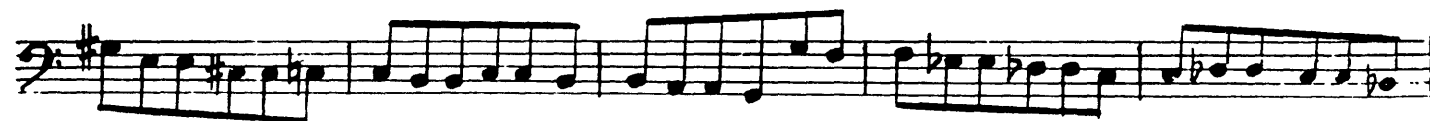
55



56



57



58



59

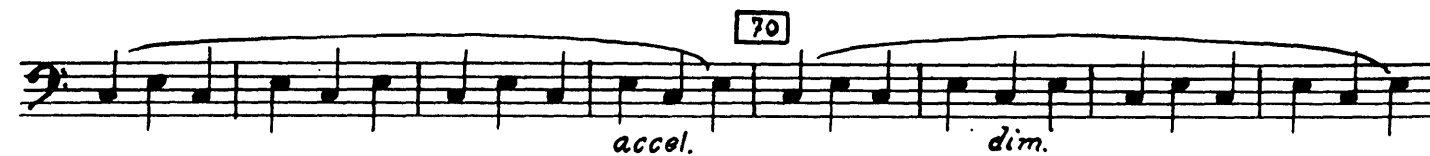




VIOLONCELLO

3 3 3 3 3 3  
 ffz ffz  
 60 3 4  
 ffz ffz  
 61 5 2  
 ffz ffz  
 62 4 1 1  
 ffz ffz ffz ffz  
 63 1  
 ffz ffz  
 ffz ffz  
 ffz  
 64 *Un poco piu mosso*  
 mf mp  
 65  
 dim. poco a poco

VIOLONCELLO



VOLONCELLO

71 *Presto* 12

vi. II 72

12

73 12 74 15 75 11 76 10 77 *Timp.*

*ff mf*

5 *senza sord.* 78

*f*

79

*mf*

*mf leggiero*

80

81

*mf sempre*

82

2

VIOLONCELLO

*f marc.* *mf*

83

*leggiero*

84

*cresc.* 85

86

*f*

87

*ffz* 11

VIOLONCELLO

88 *ff*

89 *cresc.* *fff*

90 1 2 3 4 5 6 *fffz* *sempreff*

7 8 9 10 11 12 13 14

15 16 17 18 19 20 21 22 *dim.* *mf* *(d.-d)*

23 24 25 26 *poco rall.* 27 28 29 30 31 *molto rall.* 32 33 *pp*

34 35 36 *dim.* *ppp* *dim.* *pppp* **92** *Andante un poco tranquillo* *con sord.* *mp*

7 9 **93** *mp*

*espr.* *f*

**95** *mp*

**96** *p*

VIOLONCELLO

97 *senza sord.*  
*ff cant.*

98 *sempre ff*

99 *Allegro (Tempo I)*  
*ff*

100

101 *ff*

102 *ff*

*ff marc. marc.*

103 *f cant.*

104 *cresc.* *ff fz*

*fz fz* *ff*

VIOLONCELLO

105

Two staves of musical notation for measures 105 and 106. The first staff begins with a *mf* dynamic marking. The music consists of eighth and sixteenth notes with various accidentals.

106

Two staves of musical notation for measures 106 and 107. The music continues with eighth and sixteenth notes.

107

Two staves of musical notation for measures 107 and 108. The first staff begins with a *p* dynamic marking. The music features a steady eighth-note pattern.

108

Two staves of musical notation for measures 108 and 109. The music continues with eighth and sixteenth notes.

109

Two staves of musical notation for measures 109 and 110. The music continues with eighth and sixteenth notes.

110

Two staves of musical notation for measure 110. The music concludes with a double bar line and a fermata over the final note.

VOLONCELLO

ff

111

ff mf ff ffp

112 sempre marc.

cresc.

113 Poco allarg.

f

114 poco a poco allarg.

fff