

15
N. 695

025012

I. Präludium.

Basso.

Andante con moto. ♩ = 56.

Carl Nielsen, Op. 1.



II. Intermezzo.

Basso.

Allegro moderato. ♩ = 176.

pizz.
p senza sordino

3

p

arco
mf > *pp* < *ff* *fz*

1. **2. Solo**

fz *fz* *f*

A
f sempre

di

ml *nu* *en*

do *f*

fz *di* *ml* *nu*

B **6** Cello *f*

en *do* *pp*

pizz. *arco* *pizz.*

p *f* *p*

Basso.

arco
mf *pp* *ff*

p pizz.

cre - - - scen - - - do *f*

1. 3 C 2. *p* *ff*

Viol. I 6 *p*

pizz. *mf*

D cre - - -

scen - - - do 12

Cello arco *p*

E *mf*

3 *p*

Basso.

plzz. *p* **3**

p **1** *p* **1**

arco *mf* *pp* *ff* *fz* *fz* *fz*

Solo *f*

F *f sempre*

di - - - mi - - -

- - - nu - - - en - - - do *f*

fz **G** *dim.* *pp* **6**

Cello **H** plzz. *f* *p* arco *f* plzz. *p* **8**

plzz. *mf*

Cello plzz. **17**

III. Finale.

Basso.

Andante con moto. $\text{♩} = 56$.

fz p

cre - - - - - scen -

A

f

do *di -*

mi - nu - en - do

Allegro con brio. $\text{♩} = 80$.

ff

B

p

f

di - mi - nu - en -

pizz.

C

p

I

do

Basso.

arco

First staff of music in bass clef, key of D major. It begins with a whole note chord marked 'arco' and a dynamic of *mf*. The melody consists of quarter notes: D4, E4, F#4, G4, A4, B4, C5, B4, A4, G4, F#4, E4, D4.

Second staff of music in bass clef, key of D major. It begins with a whole note chord marked *mf*. The melody consists of quarter notes: D4, E4, F#4, G4, A4, B4, C5, B4, A4, G4, F#4, E4, D4.

D

Third staff of music in bass clef, key of D major. It begins with a whole note chord marked *mf*. The melody consists of quarter notes: D4, E4, F#4, G4, A4, B4, C5, B4, A4, G4, F#4, E4, D4. The word 'scen' is written below the first measure, and 'do' is written below the eighth measure. The dynamic *ff* is written below the eighth measure.

Fourth staff of music in bass clef, key of D major. It begins with a whole note chord marked *mf*. The melody consists of quarter notes: D4, E4, F#4, G4, A4, B4, C5, B4, A4, G4, F#4, E4, D4.

Fifth staff of music in bass clef, key of D major. It begins with a whole note chord marked *p*. The melody consists of quarter notes: D4, E4, F#4, G4, A4, B4, C5, B4, A4, G4, F#4, E4, D4.

E

Sixth staff of music in bass clef, key of D major. It begins with a whole note chord marked *dim.*. The melody consists of quarter notes: D4, E4, F#4, G4, A4, B4, C5, B4, A4, G4, F#4, E4, D4. The word 'plizz.' is written above the eighth measure.

arco

Seventh staff of music in bass clef, key of D major. It begins with a whole note chord marked *pp*. The melody consists of quarter notes: D4, E4, F#4, G4, A4, B4, C5, B4, A4, G4, F#4, E4, D4. The word 'arco' is written above the eighth measure, and the dynamic *f* is written below the eighth measure.

Eighth staff of music in bass clef, key of D major. It begins with a whole note chord marked *pp*. The melody consists of quarter notes: D4, E4, F#4, G4, A4, B4, C5, B4, A4, G4, F#4, E4, D4.

F

Ninth staff of music in bass clef, key of D major. It begins with a whole note chord marked *pp*. The melody consists of quarter notes: D4, E4, F#4, G4, A4, B4, C5, B4, A4, G4, F#4, E4, D4. The word 'plizz.' is written above the eighth measure.

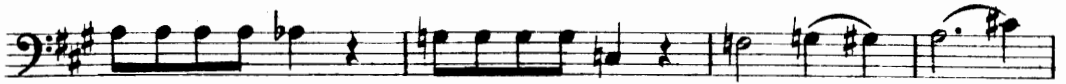
arco

Tenth staff of music in bass clef, key of D major. It begins with a whole note chord marked *pp*. The melody consists of quarter notes: D4, E4, F#4, G4, A4, B4, C5, B4, A4, G4, F#4, E4, D4. The word 'arco' is written above the eighth measure.

Eleventh staff of music in bass clef, key of D major. It begins with a whole note chord marked *pp*. The melody consists of quarter notes: D4, E4, F#4, G4, A4, B4, C5, B4, A4, G4, F#4, E4, D4. The words 'cre' and 'scen' are written below the first and eighth measures respectively.

Twelfth staff of music in bass clef, key of D major. It begins with a whole note chord marked *f*. The melody consists of quarter notes: D4, E4, F#4, G4, A4, B4, C5, B4, A4, G4, F#4, E4, D4.

Basso.



G



I



Basso.

pizz.
p

arco

J
mf

cre -

scen - - - do ff

2

dim.

pp

Più mosso.

cre - - - scen - -

do ff

1

(306) - 5 10430