

Alle Rechte vorbehalten.
„ORGANUM“
III. Reihe: Kammermusik.

Nr. 46.

Trio-Sonate C-Dur

für 2 Violinen oder 2 Flöten und Generalbass

Op. V Nr. 4

Pietro Locatelli

(1693—1764)

Bearbeitet von Hans Albrecht

Violine I (Flöte I)

Largo



Andante



SC3P
L77
2

Violine I (Flöte I)

23 *p* *f*

25

27

30

33

36 *p*

38 *f*

40

43

Violine I (Flöte I)

Allegro

(mf)

9

16

23

30

37

(mf)

44

51

59

68

75

82

Alle Rechte vorbehalten.
„ORGANUM“
III. Reihe: Kammermusik.

Nr. 46.

Trio-Sonate C-Dur

für 2 Violinen oder 2 Flöten und Generalbass

Op. V Nr. 4

Pietro Locatelli

(1693—1764)

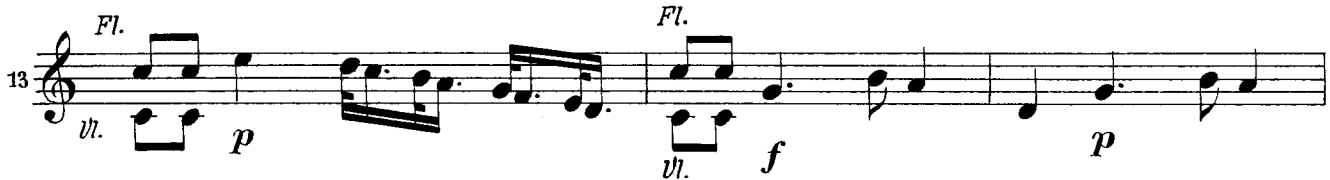
Bearbeitet von Hans Albrecht

Violine II (Flöte II)

Largo



Andante



sC39
L77
2

Violine II (Flöte II)

23 *p* *f*

25

27

30

33 *b*

36 *Fl.* *vl.* *p*

38 *Fl.* *vl.* *f*

40

43 *b*

Violine II (Flöte II)

Allegro

Musical score for Violine II (Flöte II) in 3/4 time, starting with *Allegro* and *mf* dynamics. The score consists of ten staves of music, with measure numbers 4, 8, 16, 24, 30, 38, 47, 56, 65, 72, and 80 indicated at the beginning of each staff. The music features various rhythmic patterns, including eighth and sixteenth notes, and rests. Dynamics include *mf*, *f*, and *p*. There are also markings for *tr* (trills) and *2* (second endings).

Alle Rechte vorbehalten.
„ORGANUM“
III. Reihe: Kammermusik.

Nr. 46.

Trio-Sonate C-Dur

für 2 Violinen oder 2 Flöten und Generalbass

Op. V Nr. 4

Pietro Locatelli

(1693–1764)

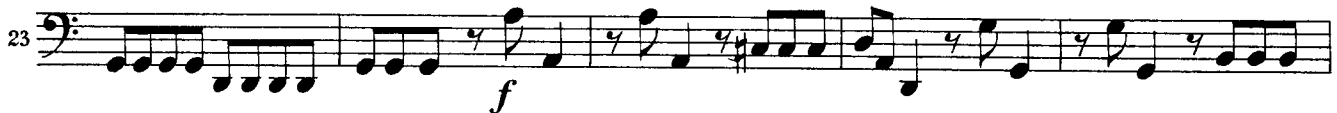
Bearbeitet von Hans Albrecht

Violoncello

Largo



Andante



SC39
L 9n
2

Violoncello

Allegro

Musical score for Violoncello, measures 1 through 81. The score is written in bass clef with a 2/4 time signature. It begins with a dynamic marking of *(mf)*. The piece is marked *Allegro*. The score includes various musical notations such as slurs, accents, and dynamic markings. Measure 25 features a *p* (piano) marking, and measure 31 features a *f* (forte) marking. Measure 38 includes a 4/4 time signature change. Measure 48 features a triplet of eighth notes. Measure 58 features a 7/8 time signature change. The score concludes with a double bar line and repeat dots at measure 81.