



19549

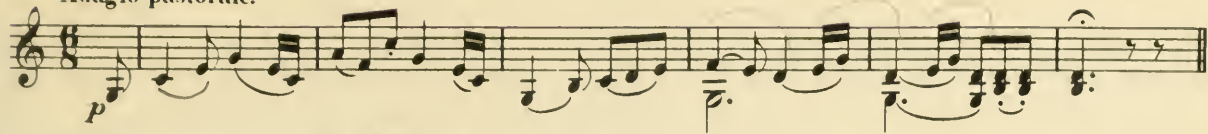


TRIO 18.

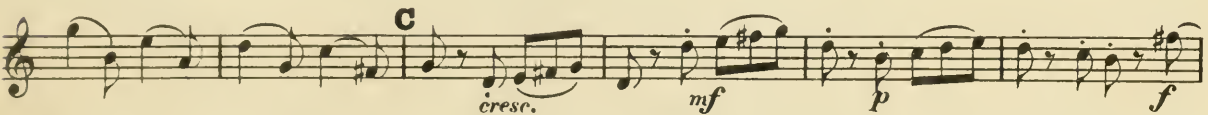
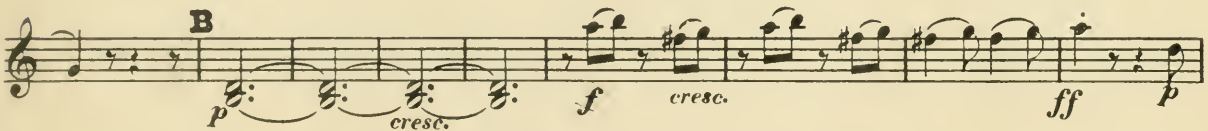
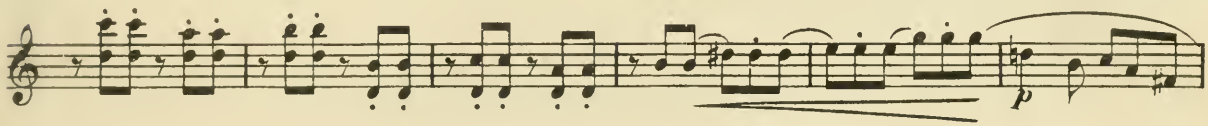
VOLINO.

J. Haydn.

Adagio pastorale.



Vivace assai.



VIOLINO.

This musical score for Violino consists of 13 systems of notation. The first system begins with a treble clef, a key signature of one flat (B-flat), and a 7/8 time signature. The music is marked *p* (piano) and includes a *cresc.* (crescendo) marking. The second system is marked *p* and includes a *cresc.* and *mf* (mezzo-forte) marking. The third system is marked *f* (forte) and includes a *fz* (forzando) marking. The fourth system is marked *f* and includes a *fz* marking. The fifth system is marked *p* and includes a *f* marking. The sixth system is marked *f* and includes a *p* marking. The seventh system is marked *p* and includes a *f* marking. The eighth system is marked *pp* (pianissimo) and includes a *p* marking. The ninth system is marked *cresc.* and includes *f*, *cresc.*, *ff* (fortissimo), and *p* markings. The tenth system is marked *f* and includes a *p* marking. The eleventh system is marked *cresc.* and includes *f* and *p* markings. The twelfth system is marked *p* and includes a *f* marking. The thirteenth system is marked *p* and includes a *cresc.* and *mf* marking.

The score includes various performance markings such as *p*, *f*, *mf*, *ff*, *pp*, *cresc.*, and *fz*. It also features dynamic hairpins and accents. The piece concludes with the tempo marking *Andante molto.* and a final *cresc.* marking.

VIOLINO.

Musical score for Violino, consisting of 12 staves. The score includes various dynamics such as *p*, *f*, *mf*, *cresc.*, and *ff*. It features performance markings including *L*, *M*, *N*, *tr*, and *drum*. The piece concludes with the instruction **FINALE. Presto.** and a final measure marked with the number 9.

VIOLINO.

The musical score for Violino consists of ten staves of music. The notation includes various dynamic markings such as *f*, *mf*, *p*, *ff*, and *ffz*, as well as performance instructions like *cresc.* and *tr*. The score is marked with letters S, T, U, V, and W, likely indicating specific sections or techniques. The music features a mix of melodic lines and rhythmic patterns, with some passages marked with accents and slurs. The key signature has one sharp (F#), and the time signature is 2/4.