

George Frideric Haendel

GIULIO CESARE

IN EGITTO

Harpe.

From the Deutsche Händelgesellschaft Edition

Edited by Frideric Chrysander

Atto Secondo, Scena II.

Recitativo.

Sinfonia.

Musical score for the first system of the Sinfonia, measures 1-4. The score is in 3/4 time with a key signature of one flat (B-flat). The upper staff (treble clef) features a melodic line with eighth and quarter notes, while the lower staff (bass clef) provides harmonic support with chords and moving bass lines.

Musical score for the second system of the Sinfonia, measures 5-8. Measure 5 is marked with a '5' above the staff. The upper staff continues the melodic line, featuring a trill (tr) in measure 8. The lower staff continues with harmonic accompaniment.

Recitativo.

Musical score for the first system of the Recitativo, measures 1-4. The score is in 3/4 time with a key signature of one flat. The upper staff (treble clef) has a melodic line with eighth and quarter notes, and the lower staff (bass clef) has a bass line with eighth and quarter notes.

Musical score for the second system of the Recitativo, measures 5-7. Measure 5 is marked with a '5' above the staff. The upper staff continues the melodic line, and the lower staff continues the bass line.

Musical score for the third system of the Recitativo, measures 8-10. Measure 8 is marked with an '8' above the staff. The upper staff features a trill (tr) in measure 8. The lower staff continues the bass line.

Musical score for the fourth system of the Recitativo, measures 11-13. Measure 11 is marked with an '11' above the staff. The upper staff continues the melodic line with eighth notes, and the lower staff continues the bass line with eighth notes.

14

Recitativo.

Aria. Cleopatra: V'adoro, pupile

Largo.

8

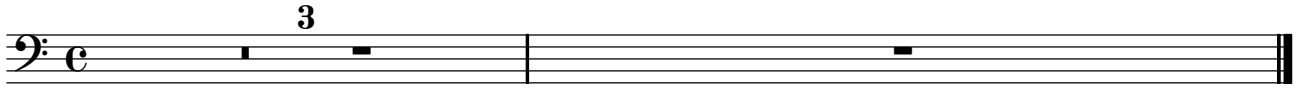
15

22

29

(Fine.)

41



Aria da Capo.