

Gratitude

(Pièces lyriques Op 62 N° 2)

Transcription : Pierre Montreuil

Edvard GRIEG

FLUTE

Allegretto semplice (♩ = 96)

p

7

poco cresc.

12

1. 2.

pp

19

cresc. e stretto *più cresc.*

25

f *p*

32

37

pp

44

50

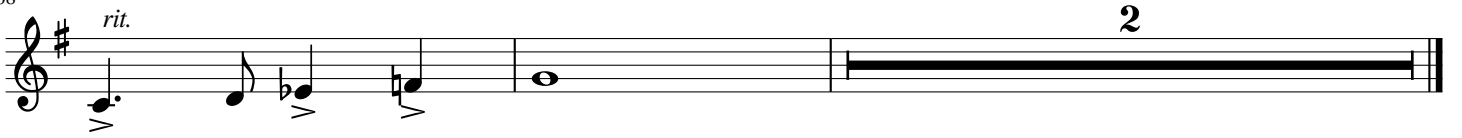
57



62



68



SERENADE

(Pièces lyriques Op 62 N° 3)

Transcription : Pierre Montreuille

Edvard GRIEG

FLUTE

Andantino grazioso (♩ = 130)

Measures 1-6 of the flute part. The key signature is two sharps (F# and C#), and the time signature is common time (C). The music begins with a whole rest, followed by a half note G4, a quarter note A4, and a quarter note B4. A dynamic marking of *p* is placed below the first measure. The piece concludes with a repeat sign and a fermata over the final note.

Measures 7-10 of the flute part. The melody continues with eighth and quarter notes, ending with a quarter rest.

Measures 11-14 of the flute part. The music features a series of eighth notes and quarter notes. A dynamic marking of *cresc.* is placed below the first measure, and a hairpin crescendo leads to a dynamic marking of *pp* at the end of the phrase.

Measures 15-19 of the flute part. The music includes a repeat sign with first and second endings. The melody consists of quarter and eighth notes.

Measures 20-25 of the flute part. The music features a triplet of eighth notes in measure 20, followed by a fermata. A dynamic marking of *cresc-* is placed below the final measure.

Measures 26-31 of the flute part. The music begins with a dynamic marking of *f*, followed by a hairpin crescendo leading to a dynamic marking of *p*. A second hairpin crescendo is placed below the final measure.

Measures 32-35 of the flute part. The music includes first and second endings. A dynamic marking of *f* is placed below the first measure, and a dynamic marking of *2* is placed below the final measure.

CHANT DU PAYSAN

(Pièces lyriques Op 65 N° 2)

Transcription : Pierre Montreuille

Edvard GRIEG

FLUTE

Andante semplice (♩ = 94)

1

p cantabile

6

10

cresc. piu cresc. f p

15

dim. pp p

19

f p

24

pp

BALLADE

(Pièces lyriques Op 65 N° 5)

Transcription : Pierre Montreuille

Edvard GRIEG

FLUTE

Lento lugubre

p *cresc.* *dim.*

8

sempre p *cresc.*

15

un poco mosso

dim. *pp* *f* *pp*

22

dim. e rit. T° 1°

f *pp* *cresc. molto*

29

un poco mosso

ff *dim.* *pp*

36

poco rit. T° 1°

f *pp* *f*

43

ff *dim. e rit.* *pp*