

Foraarssang.

(FRÜHLINGSLIED.)

Violino I.

Louis Glass, Op. 31.

Andante.

The musical score for the first section, marked 'Andante', consists of ten staves of music. It begins with a treble clef, a key signature of one sharp (F#), and a common time signature (C). The first staff starts with a *pp* dynamic and features a first ending bracket. The second staff includes a *p* dynamic, a triplet of eighth notes, and a 'Vel. Solo' marking above a sixteenth-note passage. The third staff has a *poco cresc.* marking. The fourth staff is marked *mf molto espress. ma dolce*. The fifth staff has a *cresc.* marking. The sixth staff starts with a *p* dynamic. The seventh staff is marked *pp dolce*. The eighth staff has a *cresc.* marking. The ninth staff has a *pp* dynamic and a *p cresc.* marking. The section concludes with a second ending bracket and a common time signature.

Tempo I.

The second section, marked 'Tempo I.', consists of two staves of music. It begins with a treble clef, a key signature of one sharp (F#), and a common time signature (C). The first staff starts with a *p* dynamic, followed by a *rit.* marking, then a *pp* dynamic. The second staff has a *div.* marking and ends with a *pp* dynamic.

Foraarssang.

(FRÜHLINGSLIED.)

Louis Glass, Op. 31.

Andante.

Violino II.

pp *sempre pp* *div.* *pp*
p *p* *poco cresc.* *mf*
p *p* *poco cresc.*
mf molto espress. ma dolce
cresc.
pp dolce
cresc.
pp *p cresc.*

Tempo I.

p *rit.* *pp* *pp*

Foraarssang.

(FRÜHLINGSLIED.)

Andante.

Viola.

Louis Glass, Op. 31.

pp *sempre pp* *pp*

poco cresc. *mf*

p *p* *poco cresc.*

mf molto espress. ma dolce

cresc.

p

cresc.

pp *p cresc.*

Tempo I.

p *rit.* *pp* *pp*

Foraarssang.

(FRÜHLINGSLIED.)

Andante.

Violoncello.

Louis Glass, Op.31.

pp *sempre pp* *pp*
poco cresc. *mf*
p *p* *poco cresc.*
mf molto espress. ma dolce
cresc.
p
cresc.
pp
p cresc.
p

Tempo I.

rit. *pp* *pp*

Foraarssang.

(FRÜHLINGSLIED.)

Andante.

Basso.

Louis Glass, Op. 31.

2
pp

pp

poco cresc.

2
mf *p*

poco cresc.

mf molto espress. ma dolce

cresc.

4
p *cresc.*

2
pp *p cresc.*

p

Tempo I.
1
rit. *pp* *pp*

Foraarssang.

(FRÜHLINGSLIED.)

Andante.

Flauto I.

Louis Glass, Op.31.

Musical score for Flauto I, Andante section. The score consists of eight staves of music. The first staff begins with a treble clef, a key signature of one sharp (F#), and a common time signature (C). The tempo is marked 'Andante.' and the instrument is 'Flauto I.'. The first staff is marked 'Solo' and 'p dolce'. The second staff continues the melody. The third staff has a 'p' dynamic marking and a '7' above the staff. The fourth staff is marked 'Vel. Solo' and 'mf molto espress. ma dolce'. The fifth staff has a 'cresc.' marking. The sixth staff has a '6' above the staff, 'Vel. Solo', and 'p cresc.'. The seventh staff has a '1' above the staff, 'Vel. Solo', and 'p cresc.'. The eighth staff has a '1' above the staff and ends with a fermata.

Tempo I.

Musical score for Flauto I, Tempo I section. The score consists of one staff of music. The tempo is marked 'Tempo I.'. The staff begins with a treble clef, a key signature of one sharp (F#), and a common time signature (C). The tempo is marked 'Tempo I.'. The staff is marked 'Solo' and 'p'. The staff ends with a fermata.

Foraarssang.

(FRÜHLINGSLIED.)

Flauto II.

Louis Glass, Op.31.

Andante .

4

Vel. Solo

p

7

pp

3

Vel. Solo

Vel. Solo

mf molto espress. ma dolce

cresc.

6

p cresc.

Vel. Solo

3

p cresc.

Vel. Solo

Tempo I.

1

4

Foraarssang.

(FRÜHLINGSLIED.)

Andante.

Vel. Solo

Oboe.

Louis Glass, Op. 31.

4 9

p

Vel. Solo

cresc. *pp* 1

mf molto espress. ma dolce *legato*

cresc.

8 1 3

Vel. Solo

P cresc.

Tempo I.

1 4

Foraarssang.

(FRÜHLINGSLIED.)

Louis Glass, Op.31.

Clarinetto I in A.

Andante.

Vel. Solo

Vel. Solo

4

4

3

p

Solo

p

4

pp

mf molto espress. ma dolce

3

3

cresc.

8

1

4

p cresc.

Tempo I.

1

1

pp

Foraarssang.

(FRÜHLINGSLIED.)

Louis Glass, Op. 31.

Clarinetto II in A.

Andante.

Vel. Solo

Vel. Solo

4

3

p

5

cresc.

pp

mf molto espress. ma dolce

3

cresc.

8

1

4

p cresc.

Tempo I.

1

1

pp

Foraarssang.

(FRÜHLINGSLIED.)

Fagotto I.

Louis Glass, Op.31.

Andante.

Solo

The musical score for the Fagotto I part, Andante section, consists of ten staves of music. The key signature is one sharp (F#) and the time signature is common time (C). The piece begins with a *pp* dynamic. The first staff features a *Solo* marking and a triplet of eighth notes. The second staff continues with a *pp* dynamic. The third staff includes a *poco cresc.* marking. The fourth staff shows a dynamic change to *mf* and a second ending marked with a '2'. The fifth staff returns to *pp* and includes another *poco cresc.* marking. The sixth staff is marked *mf molto espress. ma dolce*. The seventh staff is marked *cresc.*. The eighth staff is marked *p* and includes a first ending marked with a '4'. The ninth staff is marked *p* and includes a first ending marked with a '1' and a '4'. The section concludes with a final staff.

Tempo I.

The musical score for the Fagotto I part, Tempo I section, consists of one staff of music. The key signature is one sharp (F#) and the time signature is 2/4. The piece begins with a *pp* dynamic and a first ending marked with a '1'. The section concludes with a final staff.

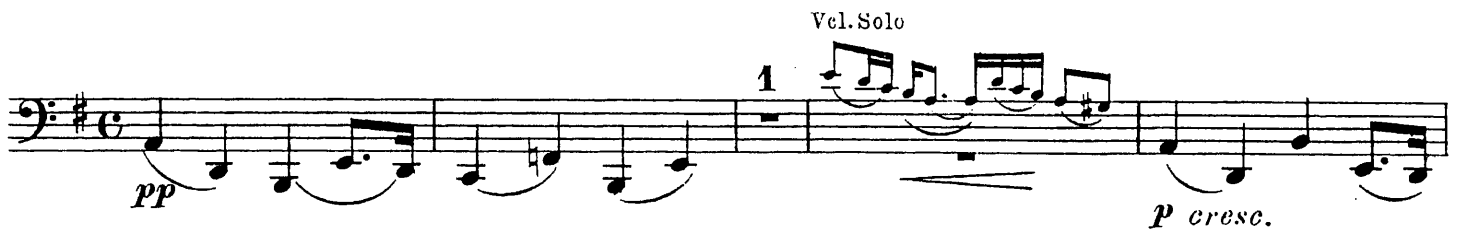
Foraarssang.

(FRÜHLINGSLIED.)

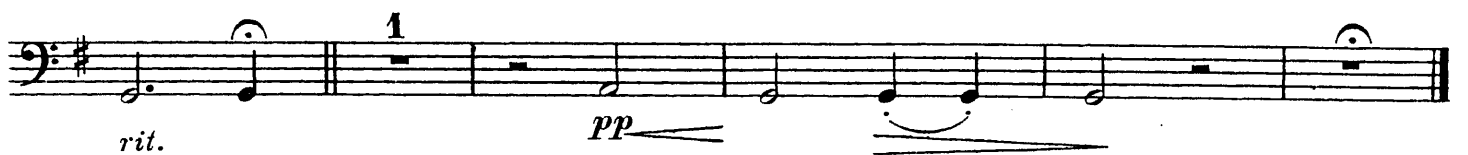
Andante.

Fagotto II.

Louis Glass, Op.31.



Tempo I.



Foraarssang.

(FRÜHLINGSLIED.)

Corno I in F.

Louis Glass, Op. 31.

Andante.

Fl. I.

3

pp

7

p

poco cresc.

Vel. Solo

pp dolce

mf

cresc.

7

cresc.

pp

Vel. Solo

1

p cresc.

Vel. Solo

pp

Tempo I.

rit.

pp

Foraarssang.

(FRÜHLINGSLIED.)

Corno II in F.

Louis Glass, Op. 31.

Andante.

Clar. I Solo

2 1 6

pp

Vel. Solo *p* *pp* *poco cresc.*

1 *mf*

cresc.

3 Vel. Solo

p

cresc.

1 *pp* Vel. Solo

p cresc. *pp*

Tempo I.

rit. 1 *pp*