

Violonchelo

OPUS - 65 GRAN QUINTETO

TRANSCRIPCIÓN: LUIS ALVAREZ

MAURO GIULIANI
(1781 - 1829)

$\text{♩} = 60$



5



10



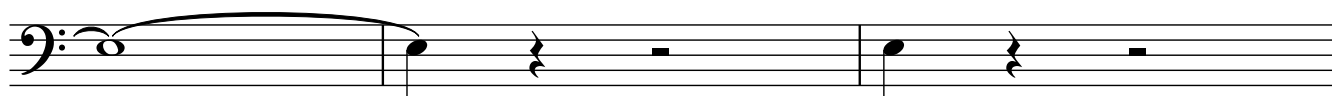
14



17



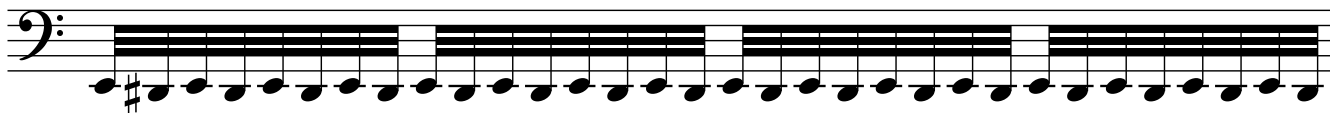
22



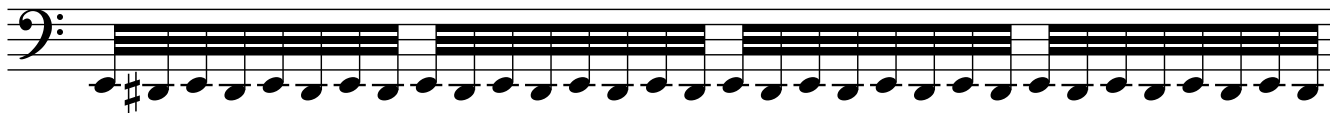
25



26



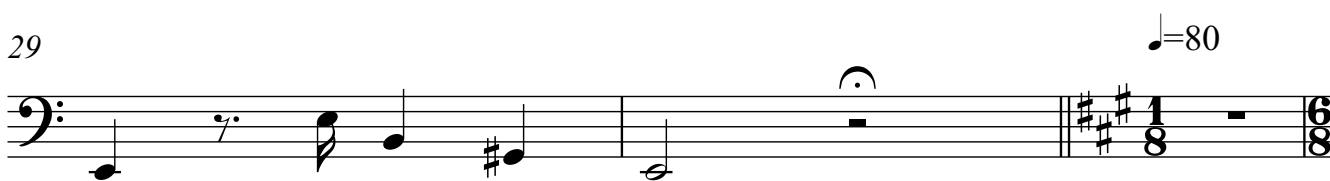
27



28



29



32



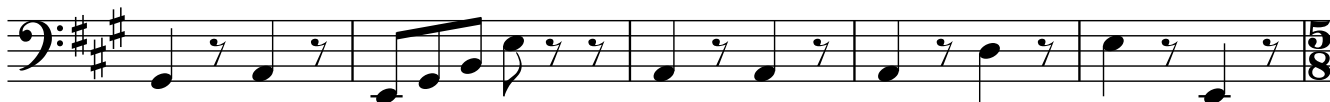
35



40



47



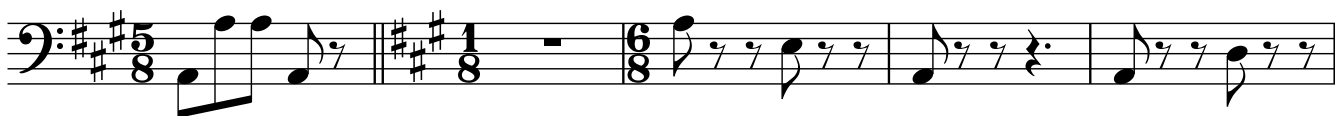
52



58



63



68



73



78



82



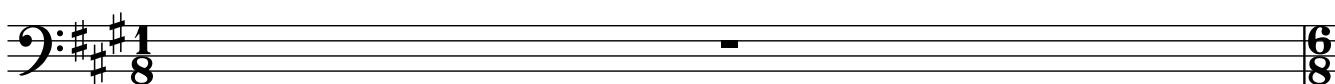
86



92



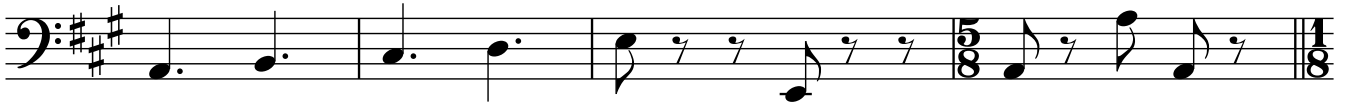
97



98



102



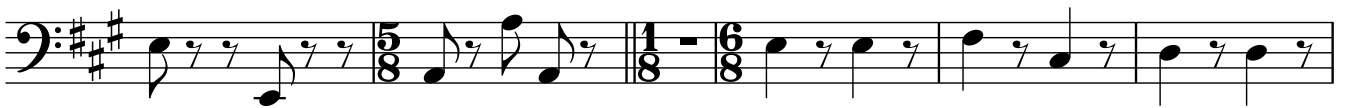
106



111



117



123



128



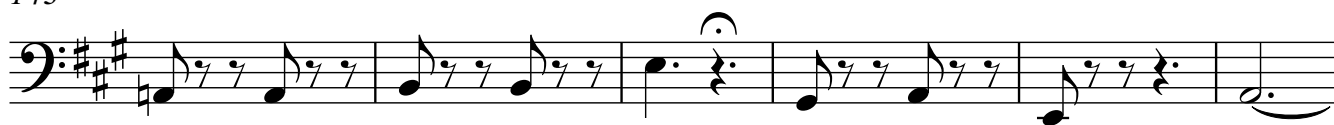
133



138



143



149



154



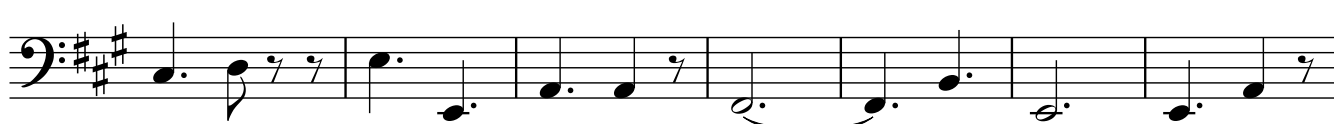
157



159

162 $\text{♩} = 60$ 

168



175



182

Musical staff for measure 182, featuring a bass clef and a key signature of three sharps (F#, C#, G#). The staff contains a sequence of eighth notes and quarter notes.

188

Musical staff for measure 188, featuring a bass clef and a key signature of three sharps (F#, C#, G#). The staff contains a sequence of eighth notes and quarter notes.

193

Musical staff for measure 193, featuring a bass clef and a key signature of three sharps (F#, C#, G#). The staff contains a sequence of eighth notes, quarter notes, and a half note, ending with a double bar line and a repeat sign.

199

$\text{♩} = 100$

Musical staff for measure 199, featuring a bass clef, a key signature of three sharps (F#, C#, G#), and a 3/4 time signature. The staff contains a sequence of eighth notes and quarter notes.

203

Musical staff for measure 203, featuring a bass clef and a key signature of three sharps (F#, C#, G#). The staff contains a sequence of eighth notes and quarter notes.

207

Musical staff for measure 207, featuring a bass clef and a key signature of three sharps (F#, C#, G#). The staff contains a sequence of eighth notes and quarter notes.

211

Musical staff for measure 211, featuring a bass clef and a key signature of three sharps (F#, C#, G#). The staff contains a sequence of quarter notes and eighth notes.

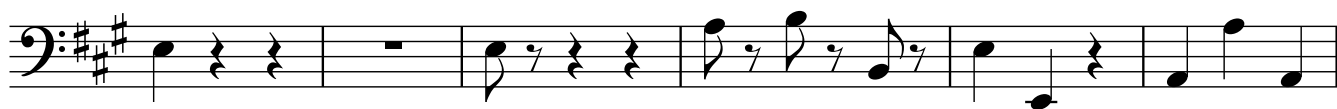
215

Musical staff for measure 215, featuring a bass clef and a key signature of three sharps (F#, C#, G#). The staff contains a sequence of quarter notes and eighth notes.

221

Musical staff for measure 221, featuring a bass clef and a key signature of three sharps (F#, C#, G#). The staff contains a sequence of quarter notes and eighth notes.

227



233



241



246



251



256



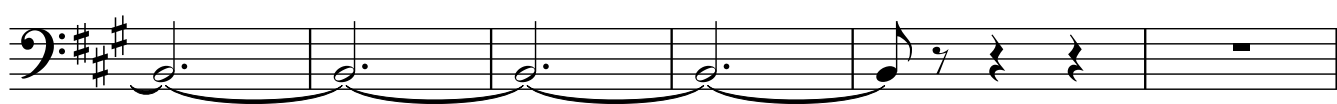
263



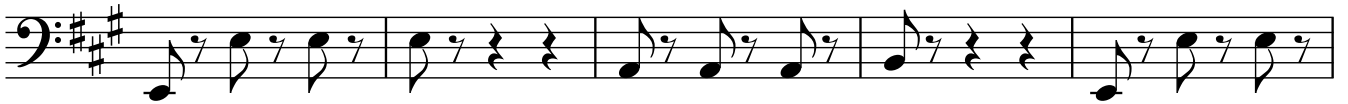
268



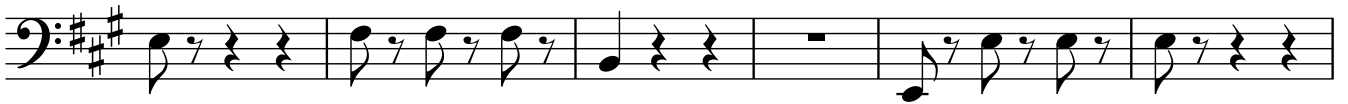
273



279



284



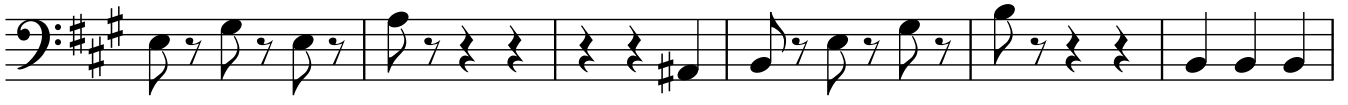
290



295



300



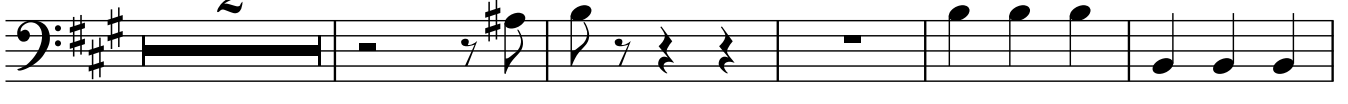
306



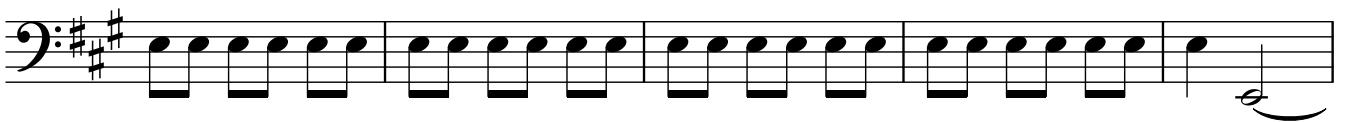
311



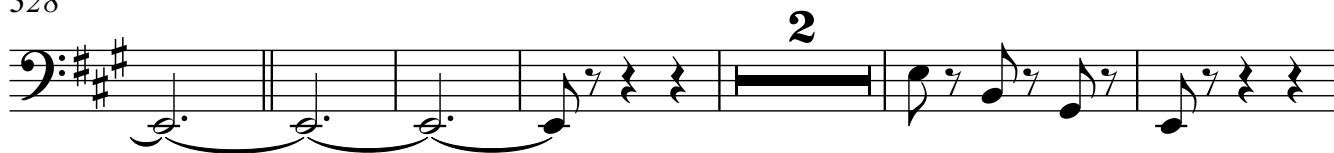
316



323



328



336



342



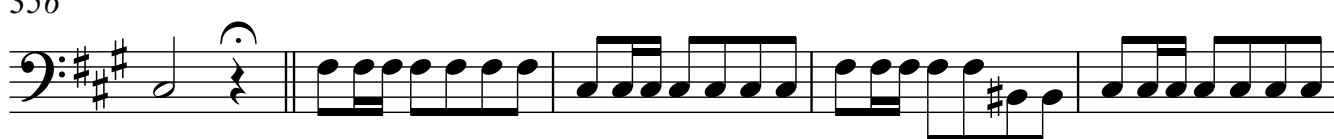
346



351



356



361



365



370

375

379

383

388

393

398

404

409

3

416



421



426



431



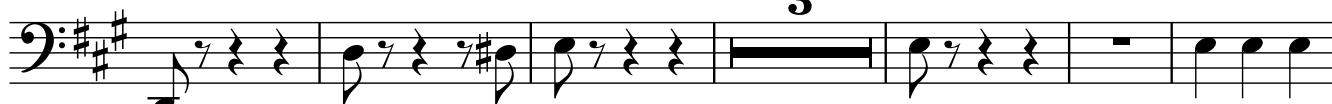
436



441



446



455



462

