

Fagot

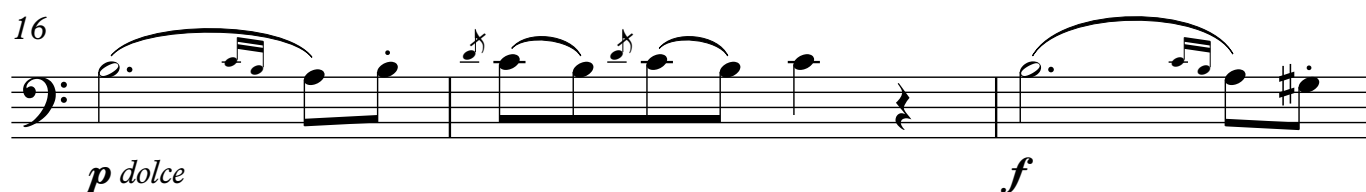
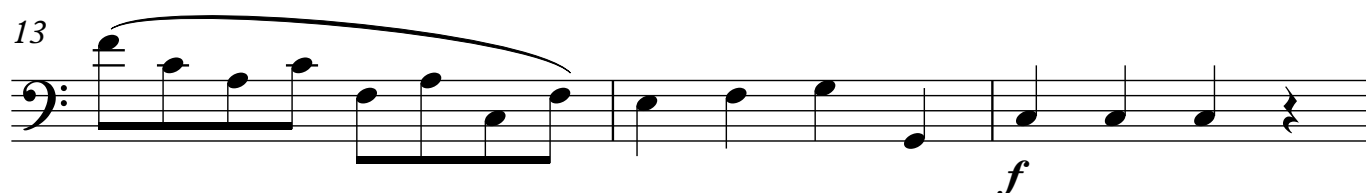
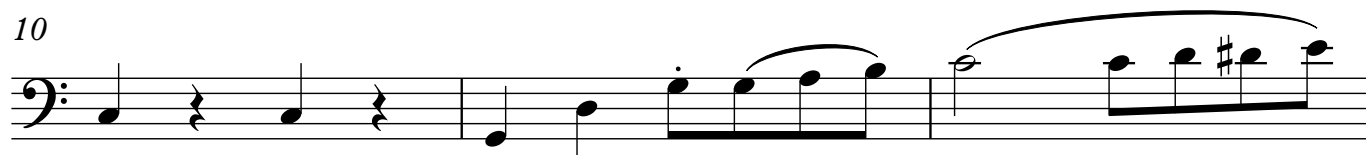
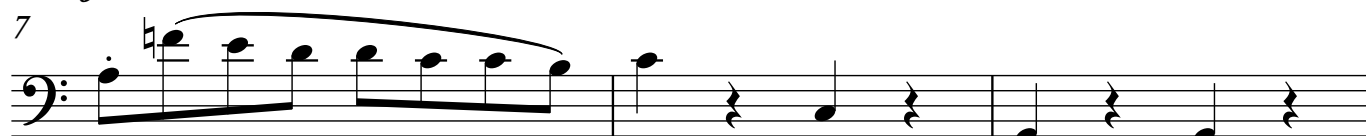
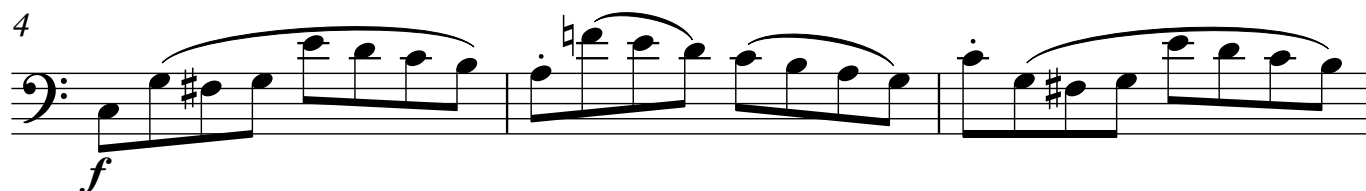
OPUS - 11 SERENATA 1.-SERENATA

TRANSCRIPCIÓN: LUIS ALVAREZ

FURSTENAU
(ANTON BENHARD)
(1792-1852)

ALEGRO CON GUSTO

♩ = 110



2

Fagot

19

Measures 19-21: Bass clef, 4/4 time. Measure 19: quarter notes G2, A2, B2, C3, D3, E3, F3, G3. Measure 20: quarter notes G3, A3, B3, C4, D4, E4, F4, G4. Measure 21: quarter notes G4, A4, B4, C5, D5, E5, F5, G5.

22

Measures 22-24: Bass clef, 4/4 time. Measure 22: quarter notes G2, A2, B2, C3, D3, E3, F3, G3. Measure 23: quarter notes G3, A3, B3, C4, D4, E4, F4, G4. Measure 24: quarter notes G4, A4, B4, C5, D5, E5, F5, G5.

25

Measures 25-27: Bass clef, 4/4 time. Measure 25: quarter notes G2, A2, B2, C3, D3, E3, F3, G3. Measure 26: quarter notes G3, A3, B3, C4, D4, E4, F4, G4. Measure 27: quarter notes G4, A4, B4, C5, D5, E5, F5, G5.

28

Measures 28-30: Bass clef, 4/4 time. Measure 28: quarter notes G2, A2, B2, C3, D3, E3, F3, G3. Measure 29: quarter notes G3, A3, B3, C4, D4, E4, F4, G4. Measure 30: quarter notes G4, A4, B4, C5, D5, E5, F5, G5.

31

Measures 31-33: Bass clef, 4/4 time. Measure 31: quarter notes G2, A2, B2, C3, D3, E3, F3, G3. Measure 32: quarter notes G3, A3, B3, C4, D4, E4, F4, G4. Measure 33: quarter notes G4, A4, B4, C5, D5, E5, F5, G5.

34

Measures 34-36: Bass clef, 4/4 time. Measure 34: quarter notes G2, A2, B2, C3, D3, E3, F3, G3. Measure 35: quarter notes G3, A3, B3, C4, D4, E4, F4, G4. Measure 36: quarter notes G4, A4, B4, C5, D5, E5, F5, G5.

37

Measures 37-39: Bass clef, 4/4 time. Measure 37: quarter notes G2, A2, B2, C3, D3, E3, F3, G3. Measure 38: quarter notes G3, A3, B3, C4, D4, E4, F4, G4. Measure 39: quarter notes G4, A4, B4, C5, D5, E5, F5, G5.

Fagot

40



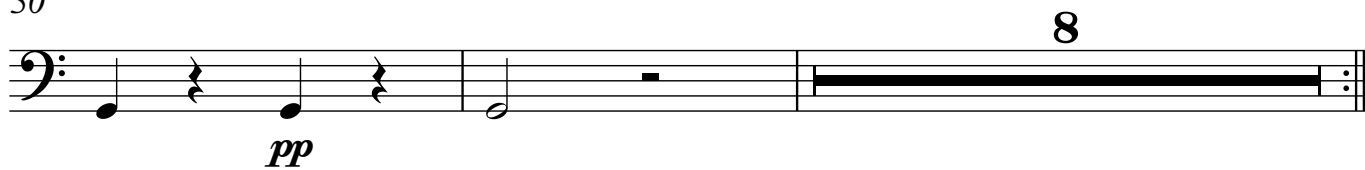
43



47



50



60

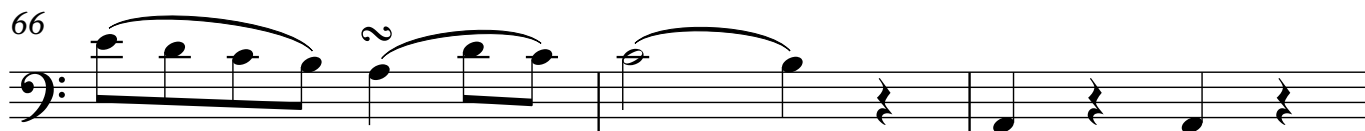
SOLO



63



66



4
69

Fagot



72



75



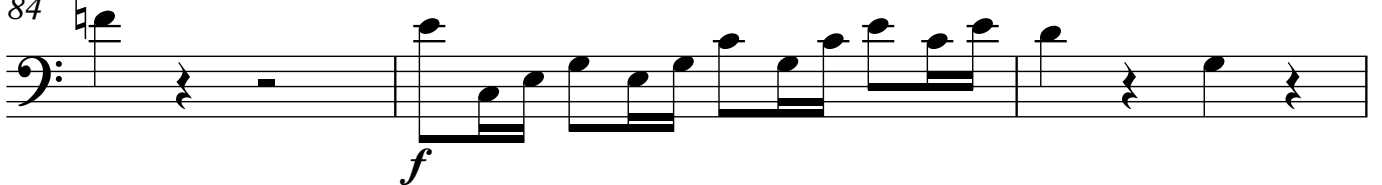
78



81



84



87



Fagot

90

93

96

99

102

p dolce *f*

105

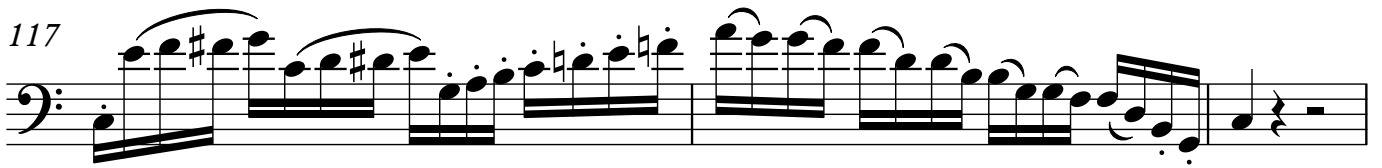
108

3 3

111



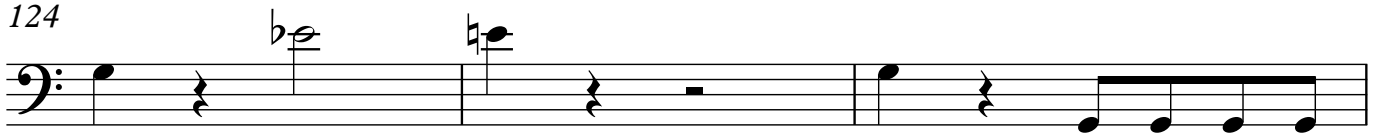
117



120



124



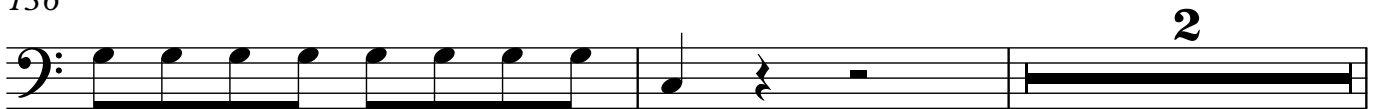
127



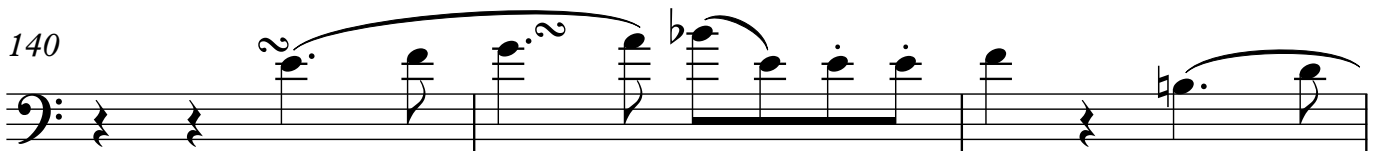
133



136



140



143

