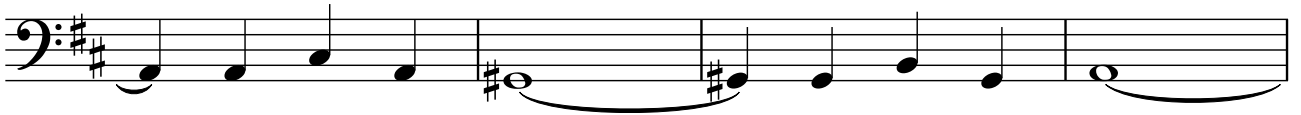


Violonchelo

25

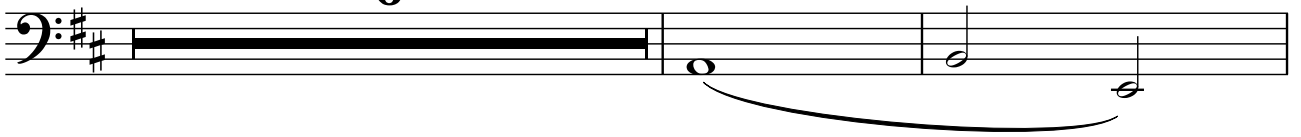


29

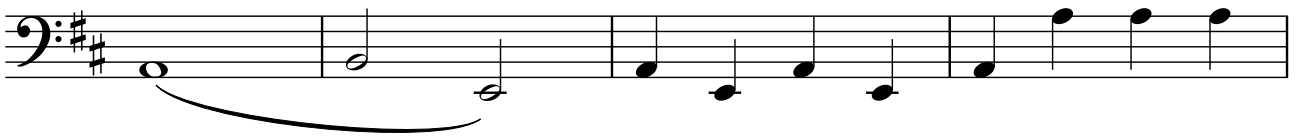


33

6



41



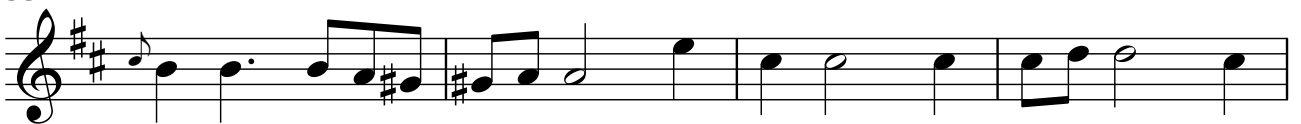
45



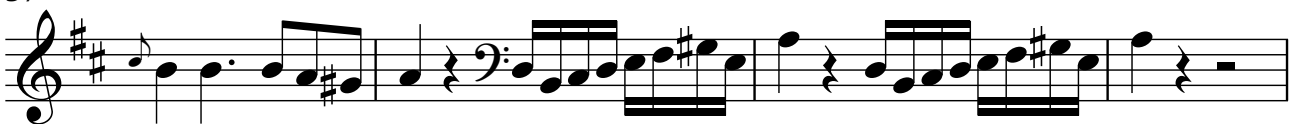
49



53



57



61

Musical staff 61 in bass clef with a key signature of two sharps (F# and C#). It begins with a double bar line and a repeat sign. The first measure contains a whole note F#2. The second measure contains a quarter note G#2, a quarter rest, and a quarter note F#2. The third measure contains a quarter note G#2, a quarter rest, and a quarter note F#2. The fourth measure contains a quarter note G#2, a quarter rest, and a quarter note F#2. The fifth measure contains a quarter note G#2, a quarter rest, and a quarter note F#2. The sixth measure contains a quarter note G#2, a quarter rest, and a quarter note F#2. The seventh measure contains a quarter note G#2, a quarter rest, and a quarter note F#2. The eighth measure contains a quarter note G#2, a quarter rest, and a quarter note F#2. The dynamic marking *p cresc.* is placed below the first measure, and *f* is placed below the eighth measure.

65

Musical staff 65 in bass clef with a key signature of two sharps. It consists of eight measures of eighth notes with stems pointing up. The notes are: F#2, G#2, A2, B2, C3, D3, E3, F#3. The first measure has a 'Pizz.' marking below the note. The second measure has a 'Pizz.' marking below the note. The third measure has a 'Pizz.' marking below the note. The fourth measure has a 'Pizz.' marking below the note. The fifth measure has a 'Pizz.' marking below the note. The sixth measure has a 'Pizz.' marking below the note. The seventh measure has a 'Pizz.' marking below the note. The eighth measure has a 'Pizz.' marking below the note.

69

Arco.

Musical staff 69 in bass clef with a key signature of two sharps. It consists of eight measures of eighth notes with stems pointing up. The notes are: F#2, G#2, A2, B2, C3, D3, E3, F#3. The dynamic marking *cresc.* is placed below the fourth measure.

73

Musical staff 73 in bass clef with a key signature of two sharps. It consists of eight measures of eighth notes with stems pointing up. The notes are: F#2, G#2, A2, B2, C3, D3, E3, F#3. The word **SOLO** is printed in bold below the fourth measure.

77

Musical staff 77 in treble clef with a key signature of two sharps. It consists of eight measures of eighth notes with stems pointing up. The notes are: F#3, G#3, A3, B3, C4, D4, E4, F#4. The first measure has a slur over the notes.

81

Musical staff 81 in treble clef with a key signature of two sharps. It consists of eight measures of eighth notes with stems pointing up. The notes are: F#3, G#3, A3, B3, C4, D4, E4, F#4. The first measure has a slur over the notes. The eighth measure has a 'Pizz.' marking below the note.

85

Musical staff 85 in bass clef with a key signature of two sharps. It consists of eight measures of eighth notes with stems pointing up. The notes are: F#2, G#2, A2, B2, C3, D3, E3, F#3. The first measure has a 'Pizz.' marking below the note.

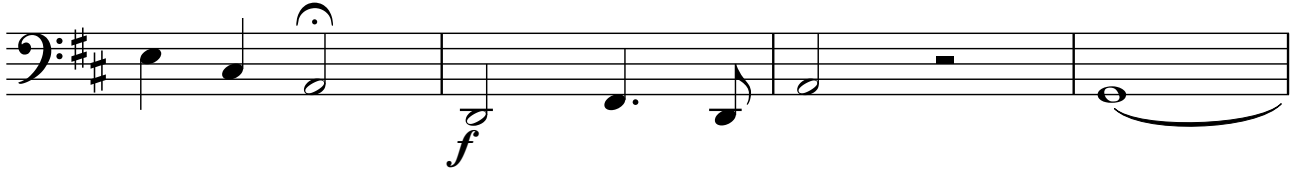
89

Musical staff 89 in bass clef with a key signature of two sharps. It consists of eight measures of eighth notes with stems pointing up. The notes are: F#2, G#2, A2, B2, C3, D3, E3, F#3. The first measure has a 'Pizz.' marking below the note.

93



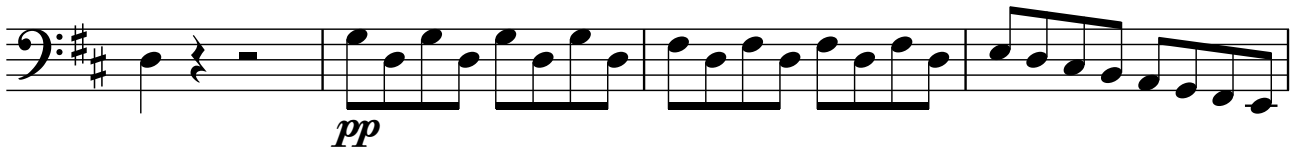
97



101



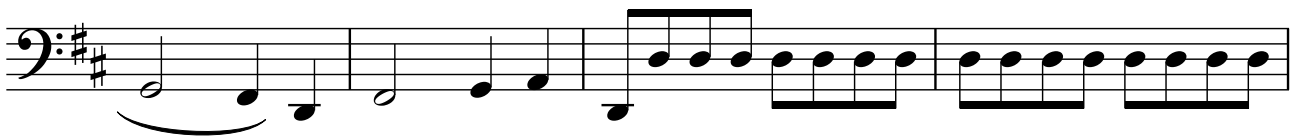
105



109



113



117



121



125

Pizz.

Musical notation for measures 125-128 in bass clef, key of D major. Measure 125 starts with a half rest, followed by quarter notes D2, E2, F#2, G2. Measure 126 has a half rest, followed by quarter notes A2, B2, C3, D3. Measure 127 has a half rest, followed by quarter notes E3, F#3, G3, A3. Measure 128 has a half rest, followed by quarter notes B3, C4, D4, E4. A dynamic marking *ff* is placed below measure 127. Pedal points are indicated by small triangles under the notes in measures 125, 126, 127, and 128.

129

Musical notation for measures 129-132 in bass clef, key of D major. Measure 129 has a half rest, followed by quarter notes D2, E2, F#2, G2. Measure 130 has a half rest, followed by quarter notes A2, B2, C3, D3. Measure 131 has a half rest, followed by quarter notes E3, F#3, G3, A3. Measure 132 has a half rest, followed by quarter notes B3, C4, D4, E4. Pedal points are indicated by small triangles under the notes in measures 129, 130, 131, and 132.

133

Arco.

Musical notation for measures 133-136 in bass clef, key of D major. Measure 133 has a half rest, followed by quarter notes D2, E2, F#2, G2. Measure 134 has a half rest, followed by quarter notes A2, B2, C3, D3. Measure 135 has a half rest, followed by quarter notes E3, F#3, G3, A3. Measure 136 has a half rest, followed by quarter notes B3, C4, D4, E4. Pedal points are indicated by small triangles under the notes in measures 133 and 134. A slur is placed over measures 135 and 136.

137

Musical notation for measures 137-140 in bass clef, key of D major. Measure 137 has a half rest, followed by quarter notes D2, E2, F#2, G2. Measure 138 has a half rest, followed by quarter notes A2, B2, C3, D3. Measure 139 has a half rest, followed by quarter notes E3, F#3, G3, A3. Measure 140 has a half rest, followed by quarter notes B3, C4, D4, E4. A dynamic marking *cresc.* is placed below measure 140. A slur is placed over measures 137 and 138.

141

Musical notation for measures 141-144 in bass clef, key of D major. Measure 141 has a half rest, followed by quarter notes D2, E2, F#2, G2. Measure 142 has a half rest, followed by quarter notes A2, B2, C3, D3. Measure 143 has a half rest, followed by quarter notes E3, F#3, G3, A3. Measure 144 has a half rest, followed by quarter notes B3, C4, D4, E4. A dynamic marking *f* is placed below measure 141. Pedal points are indicated by small triangles under the notes in measures 141, 142, 143, and 144.

145

Musical notation for measures 145-148 in bass clef, key of D major. Measure 145 has a half rest, followed by quarter notes D2, E2, F#2, G2. Measure 146 has a half rest, followed by quarter notes A2, B2, C3, D3. Measure 147 has a half rest, followed by quarter notes E3, F#3, G3, A3. Measure 148 has a half rest, followed by quarter notes B3, C4, D4, E4. Pedal points are indicated by small triangles under the notes in measures 145, 146, 147, and 148.

149

Musical notation for measures 149-152 in treble clef, key of D major. Measure 149 has a half rest, followed by quarter notes D4, E4, F#4, G4. Measure 150 has a half rest, followed by quarter notes A4, B4, C5, D5. Measure 151 has a half rest, followed by quarter notes E5, F#5, G5, A5. Measure 152 has a half rest, followed by quarter notes B5, C6, D6, E6. Pedal points are indicated by small triangles under the notes in measures 149, 150, 151, and 152.

153

Musical notation for measures 153-156 in treble clef, key of D major. Measure 153 has a half rest, followed by quarter notes D4, E4, F#4, G4. Measure 154 has a half rest, followed by quarter notes A4, B4, C5, D5. Measure 155 has a half rest, followed by quarter notes E5, F#5, G5, A5. Measure 156 has a half rest, followed by quarter notes B5, C6, D6, E6. Pedal points are indicated by small triangles under the notes in measures 153, 154, 155, and 156.

155

Musical notation for measures 155-158 in bass clef, key of D major. Measure 155 has a half rest, followed by quarter notes D2, E2, F#2, G2. Measure 156 has a half rest, followed by quarter notes A2, B2, C3, D3. Measure 157 has a half rest, followed by quarter notes E3, F#3, G3, A3. Measure 158 has a half rest, followed by quarter notes B3, C4, D4, E4. Pedal points are indicated by small triangles under the notes in measures 155, 156, 157, and 158.