

Gabriel Fauré Requiem, Op. 48

N°1 INTROÏT et KYRIE N°2 OFFERTOIRE N°3 SANCTUS
N°4 PIE JESUS N°5 AGNUS DEI **TACENT**

VI LIBERA ME

1^{er} et 2^e TROMBONES

Moderato.

A B C D Cors

10 9 17 7 8 f

Detailed description: This system shows the musical notation for the first and second trombones. The tempo is marked 'Moderato.' The music is in 4/4 time. It is divided into measures labeled A, B, C, and D. Measure 10 is the first measure of section A, measure 9 is the first of B, 17 is the first of C, and 7 is the first of D. Measure 8 is the first measure of the 'Cors' (Horn) part, marked with a forte 'f' dynamic. The bottom staff shows the bass clef and the top staff the treble clef.

Più mosso.

(1) (2) (3) (4)

Detailed description: This system shows the musical notation for the first and second trombones at a 'Più mosso' tempo. It consists of four measures, each labeled with a circled number (1) through (4). The music is in 4/4 time. The bottom staff shows the bass clef and the top staff the treble clef.

Trombones

E

5 f 4

Detailed description: This system shows the musical notation for the first and second trombones, labeled 'Trombones'. It consists of four measures, each labeled with a circled number (5) through (8). Measure 5 is the first measure of section E, marked with a forte 'f' dynamic. Measure 4 is the last measure of section E. The music is in 4/4 time. The bottom staff shows the bass clef and the top staff the treble clef.

F G

f p 11 3

Detailed description: This system shows the musical notation for the first and second trombones, labeled 'F' and 'G'. It consists of four measures, each labeled with a circled number (11) through (14). Measure 11 is the first measure of section F, marked with a forte 'f' dynamic. Measure 13 is the first measure of section G, marked with a piano 'p' dynamic. Measure 3 is the last measure of section G. The music is in 4/4 time. The bottom staff shows the bass clef and the top staff the treble clef.

Fauré — Requiem, Op. 48

1^{re} et 2^e TROMBONES

H Moderato.

5 *pp* *p* *pp* 5

J

pp 3 *pp* *poco*

K

pp 1 1 *pp* *meno p*

L

cresc *f* *sempre f*

L

dim *p* *pp* 13

N° 7 IN PARADISUM TACET

REQUIEM

1st & 2nd Trombones

Nº 1 INTROÏT et KYRIE

Nº 2 OFFERTOIRE

Nº 3 SANCTUS

Nº 4 PIE JESU

Nº 5. AGNUS DEI

TACENT

VI LIBERA ME

Moderato

10

(A)

9

(B)

13

Tempo
4

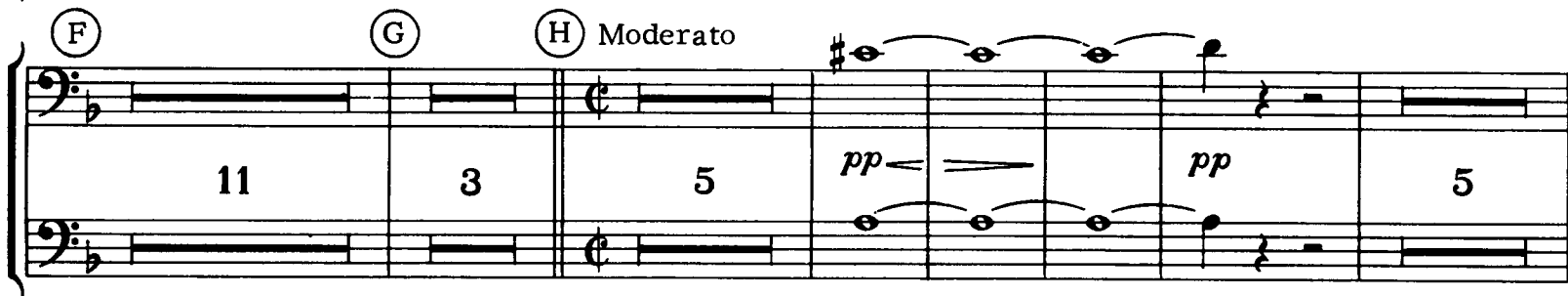
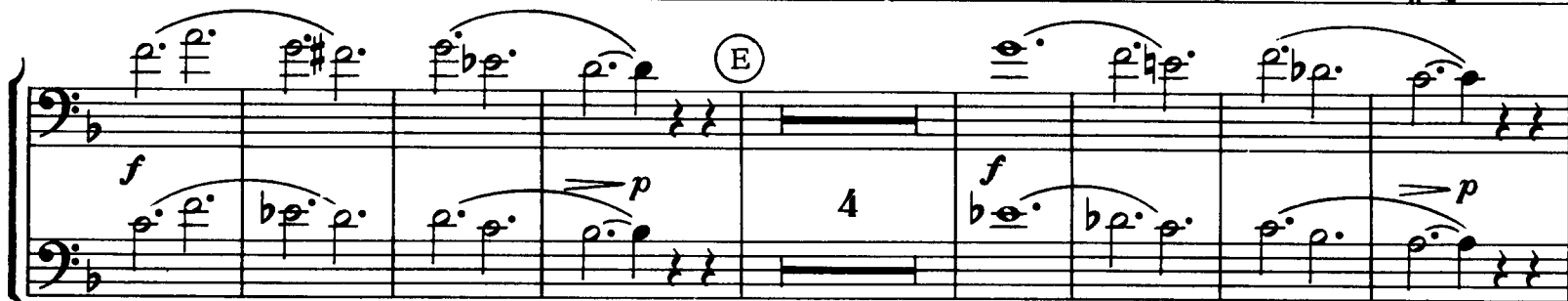
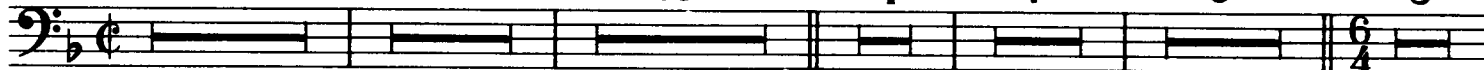
(C)

7

(D)

9

piu mosso
5



Nº 7 IN PARADISUM **TACENT**

Gabriel Fauré
Requiem, Op. 48

N° 1 INTROÏT et KYRIE N° 2 OFFERTOIRE N° 3 SANCTUS
N° 4 PIE JESU N° 5 AGNUS DEI TACENT

VI LIBERA ME

3^e TROMBONE

Moderato. Più mosso.

10 A 9 B 17 C 7 D 9 6 1

Tromb.

Di - es il - la Di - es i - rae *f*

E 4 *f* F 11 *p*

Mod^{to} G 3 H 1 2^e Tromb. *pp*

lu - ce - at e - is

3^e Tromb. *p* *pp* *pp* J 5

3 *pp* *poco.* *pp* 1 K 1 *pp*

meno p *cresc.* *f* *sempre f*

L 14 *dim.* *p* *pp*

N° 7 IN PARADISUM TACET