

# SONATE DA CAMERA

à tre, cioè due Violini, Violoncello è  
Clavecembalo, ò vero due Haubois con  
il Fagotto.

Dedicate all'

ALTEZZA REALE

DI

## LEOPOLDO PRIMO

Duca di Lorena, Rè di Gerusalemme, Marchese Duca di Calabria,  
di Bar, di Gheldria, del Monferrato è di Carloville, Marchese di Ponte-  
a Mousfon è di Nomeny, Conte di Provenza, di Vaudemonte, di Blamonte,  
di Zutphen, di Sarverden, di Salme è di Falkenstein &c. &c. &c.

*Da me*

### *EVARISTO FELICE DALL' ABACO*

*Cittadino Veronese Maestro de Concerti  
dell' A. S. C. di Baviera.*

### OPERA TERZA.

*LIBRO SECONDO.*



*A. AMSTERDAM*

*Chez ESTIENNE ROGER, Marchand Libraire.*

*& MICHEL CHARLES LE CENE*

*N° 185*

Ac. e<sup>4</sup>. 153 (2)

Violoncello

SONATA VII  *Largo*

 *Piano* *Forte* *Allemanda Allegro* *Piano* *Sarabanda Largo* *Volti Subito*

Violoncello

*Giga Allegro*

*Piano*

*Piano*

**SONATA VIII**

*Largo*

*Allegro*

*Piano*

Violoncello

*Forte*

*Piano* *Sarabanda Largo*

*Aria Allegro*

Violoncello

SONATA IX

*Largo*

*Piano*

*Allemanda Allegro*

*Piano*

*Aria Largo*

Violoncello

*Giga Allegro*

*Piano*

*Piano*

*Forte*

*Piano*

This section contains the first piece of music, written for cello. It begins with a 6/8 time signature and a repeat sign. The tempo is marked *Giga Allegro*. The score consists of eight staves of music. Dynamic markings include *Piano* (twice) and *Forte*. The piece concludes with a repeat sign and a double bar line.

SONATA X

*Adagio e Cantabile*

*Piano*

*Forte*

*Piano*

*Forte*

This section contains the second piece of music, titled "SONATA X". It is written in common time (C). The tempo is marked *Adagio e Cantabile*. The score consists of four staves of music. Dynamic markings include *Piano* (twice) and *Forte* (twice). The piece concludes with a double bar line.

Violoncello

*Allegro*

*Forte*

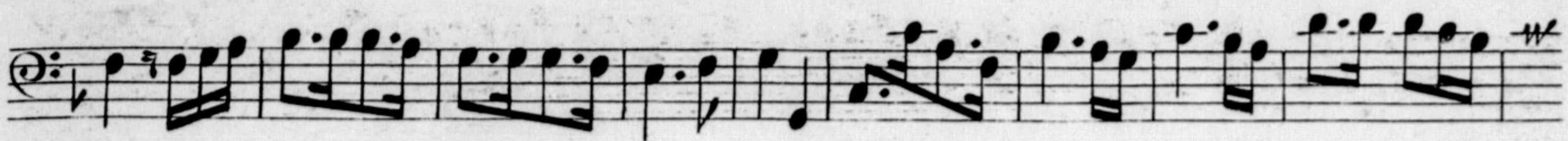
*Piano Forte*

*Piano*

*Sarabanda Largo*

*Gavotta Allegro*

Violoncello



*Piano*



*Grave*



*Piano*

*Allemanda Allegro*



*Segue la Ciaccona*



Violoncello

*Ciaccona Vivace*

*Piano*

*Forte*

*Fina* *Piano* *Forte*

*Piano*

*Forte*

The first system consists of three staves of music. The top staff features a melodic line with various rhythmic values and accidentals. The middle and bottom staves contain dense, multi-measure rests, likely representing a complex figured bass or a specific performance technique. The music concludes with a double bar line and a repeat sign.

*Piano*

*Da Capo del Segno 2.*

# SONATA XII

*Largo*

*Piano Forte*

The second system consists of three staves of music. The top staff begins with a melodic line, followed by the middle and bottom staves which contain dense, multi-measure rests. The music concludes with a double bar line and a repeat sign.

## *Allemanda Allegro*

*Piano*

The third system consists of three staves of music. The top staff begins with a melodic line, followed by the middle and bottom staves which contain dense, multi-measure rests. The music concludes with a double bar line and a repeat sign.

*Piano*

*Volti Subito*

The fourth system consists of three staves of music. The top staff begins with a melodic line, followed by the middle and bottom staves which contain dense, multi-measure rests. The music concludes with a double bar line and a repeat sign.

Violoncello

*Aria Adagio*

*Piano* *Forte*

*Gavotta 1 Alternativamente con la 2<sup>da</sup>*

*Fine* *Gavotta 2<sup>da</sup>*

*Da Capo del Gavotta 1<sup>ma</sup>*

*Allegro Assai*