

String Quartet No.1

Third Movement

Johannes Brahms

semplice

2nd Violin

Musical notation for the 2nd Violin part, measures 1-5. The staff is in treble clef with a key signature of three flats (B-flat, E-flat, A-flat) and a 4/4 time signature. The music begins with a first-measure rest, followed by a half note G4, a quarter note F4, and a quarter note E4. A repeat sign follows. The subsequent measures consist of a steady eighth-note accompaniment in the right hand and a series of chords in the left hand.

Musical notation for the 2nd Violin part, measures 6-10. The notation continues with eighth-note accompaniment and chords. Measure 10 features a melodic phrase in the right hand consisting of a quarter note G4, a quarter note F4, and a quarter note E4.

Musical notation for the 2nd Violin part, measures 11-15. Measures 11-12 feature a continuous eighth-note accompaniment. Measures 13-15 show a melodic line in the right hand with a long, sweeping slur over the notes.

Musical notation for the 2nd Violin part, measures 16-20. Measure 16 starts with a dynamic marking of *p* (piano) and a first-measure rest. The music continues with eighth-note accompaniment and a melodic line in the right hand, ending with a long slur.

20

25 *p*

30

34

38

42 pizz.



45



48 arco

3



51



54



56 *dolce* *p* $\text{p} >$

60

64 *p*

69 *p*

74

79

84

pizz.

89

arco

p

95

poco cresc.

101

poco cresc.

107

p *p*

113

p

119

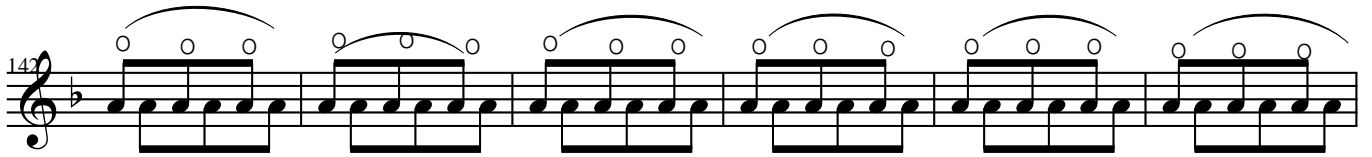
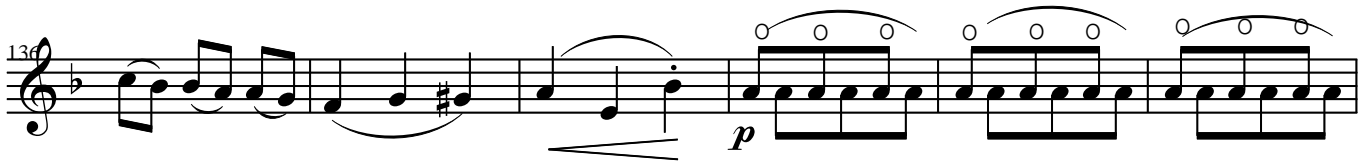
poco cresc. *dim.* *p*

124

p

130

f



H