

Suite N° 2

BWV 1008

JS BACH

Transcription

Pierre Montreuille

Version originale transposée

BASSON

PRELUDE

5

9

12

16

19

22

25

28

31



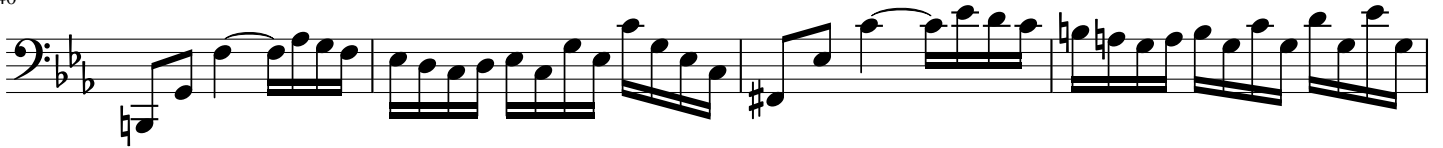
34



37



40



44



46



49



52



55



58



ALLEMANDE

4

6

8

10

12

14

17

19

22

24



COURANTE



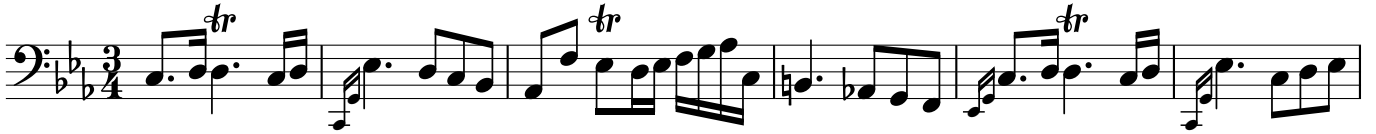
30



33



SARABANDE



7



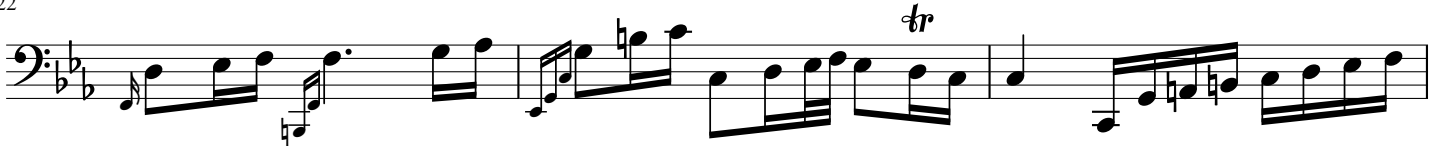
13



18



22



25



MENUET 1

Musical score for Menuet 1, Bass Clef, 3/4 time, B-flat major. The score consists of four staves. The first staff starts with a treble clef and a key signature of two flats. The second staff begins at measure 7. The third staff begins at measure 13 and includes trills. The fourth staff begins at measure 20 and ends with a double bar line and repeat dots.

MENUET 2

Musical score for Menuet 2, Bass Clef, 3/4 time, B-flat major. The score consists of four staves. The first staff starts with a treble clef and a key signature of two flats. The second staff begins at measure 7 and includes a trill. The third staff begins at measure 13. The fourth staff begins at measure 19 and includes a trill, ending with a double bar line and repeat dots.

Men 1 D.C.

GIGUE

Musical score for Gigue, Bass Clef, 3/8 time, B-flat major. The score consists of two staves. The first staff starts with a treble clef and a key signature of two flats. The second staff begins at measure 10 and includes a trill.

17



24



30



37



44



50



56



62



68



73



Detailed description: This image shows a page of musical notation for the bass line of the first movement of J.S. Bach's Suite No. 2 in B-flat major, BWV 1008. The page contains eight staves of music, each starting with a measure number. The notation is in bass clef with a key signature of two flats (B-flat major). The music features a variety of rhythmic patterns, including eighth and sixteenth notes, and rests. A repeat sign is present at the end of the third staff (measures 30-36). The page concludes with a double bar line and repeat dots at the end of the eighth staff (measures 73-78).