

# Suite N° 2

BWV 1008

**JS BACH**

*Transcription*

*Pierre Montreuille*

Version annotée (tonalité originale)

**BASSON**

## PRELUDE

5

9

12

16

19

22

25

28

31



34



37



40



44



46



49



52



55



58



# ALLEMANDE

4

6

8

10

12

14

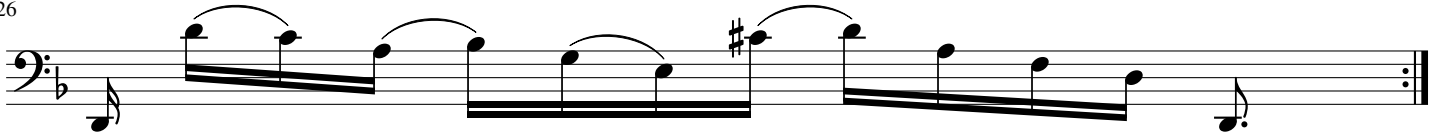
17

19

22

24

26



**COURANTE**



5



8



11



14



17



21



24



27



30

33

**SARABANDE**

7

13

18

23

26

### MENUET 1

Musical score for Menuet 1, Bass Clef, 3/4 time signature. The score consists of four staves of music. The first staff starts with a treble clef and a key signature of one flat (B-flat). The second staff begins with a measure number '7'. The third staff includes trills marked 'tr'. The fourth staff ends with a double bar line and repeat dots.

### MENUET 2

Musical score for Menuet 2, Bass Clef, 3/4 time signature. The score consists of four staves of music. The first staff starts with a treble clef and a key signature of one flat (B-flat). The second staff begins with a measure number '7'. The third staff includes trills marked 'tr'. The fourth staff ends with a double bar line and repeat dots. The text 'Men 1 D.C.' is written below the final staff.

### GIGUE

Musical score for Gigue, Bass Clef, 3/8 time signature. The score consists of two staves of music. The first staff starts with a treble clef and a key signature of one flat (B-flat). The second staff begins with a measure number '10'. The score includes accents and trills marked 'tr'.

17



24



30



37



44



50



56



62



68



73



The image displays a page of musical notation for the bass line of the second movement of J.S. Bach's Suite No. 2, BWV 1008. The notation is written in bass clef with a key signature of one flat (B-flat). The page is divided into eight systems, each starting with a measure number: 17, 24, 30, 37, 44, 50, 56, and 73. The music features a variety of rhythmic patterns, including eighth and sixteenth notes, often beamed together. There are several instances of slurs and accents. The piece concludes with a double bar line and repeat dots at measure 77.