

Suite N° 2

BWV 1008

JS BACH

Transcription

Pierre Montreuille

Version transposée et annotée

BASSON

PRELUDE

5

9

12

16

19

22

25

28

31



34



37



40



44



46



49



52



55



58



ALLEMANDE

4

6

8

10

12

14

17

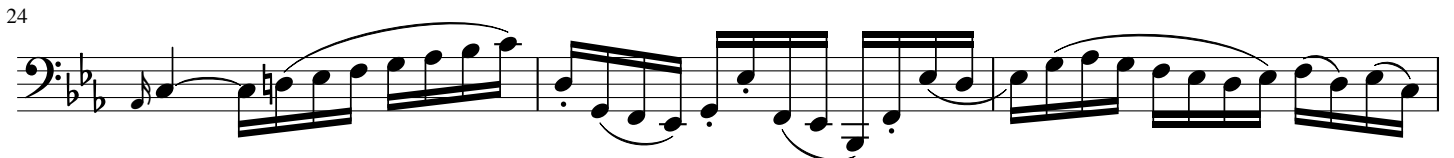
19

22

24



COURANTE



30

33

SARABANDE

7

13

17

22

25

MENUET 1

7

13

20

MENUET 2

7

13

19

Men 1 D.C.

GIGUE

10

17



24



30



37



44



50



56



62



68



73



Detailed description: This image shows a page of musical notation for the bass line of the first movement of J.S. Bach's Suite No. 2 in B-flat major, BWV 1008. The page contains eight staves of music, each starting with a measure number. The notation is in bass clef with a key signature of two flats (B-flat major). The music features a variety of rhythmic patterns, including eighth and sixteenth notes, often beamed together. There are several slurs and accents throughout. The piece concludes with a double bar line and repeat dots at the end of the eighth staff.