

# Guitarra 1

## BWV - 1023

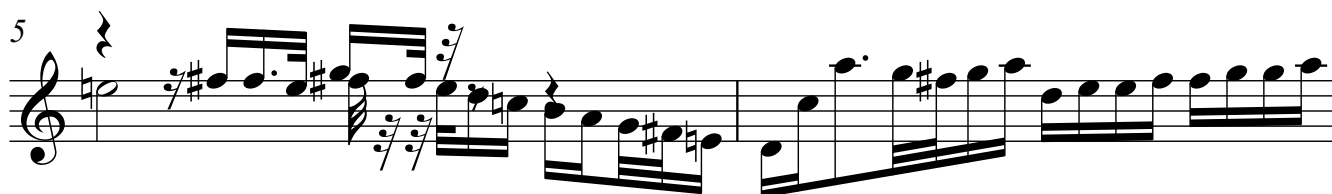
### SONATA

#### 3 - ALLEMANDE

TRANSCRIPCIÓN: LUIS ALVAREZ

J. S. BACH  
(1685-1750)

♩ = 50



13



15



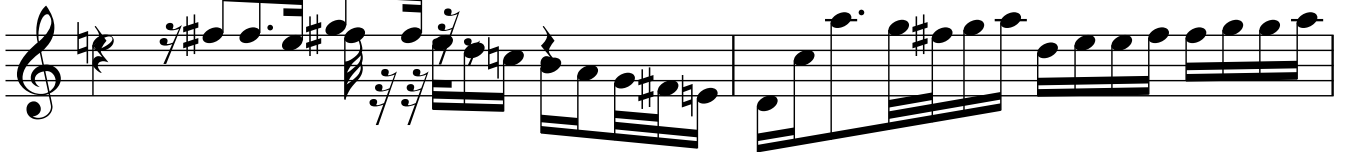
17



19



21



23



25



27



29



31



33



35



37



39



41



43



45



47



49



51



53



55



57



59



61



62



63



65

