

Violín

BWV - 1016 SONATA 2 - ALEGRO

TRANSCRIPCIÓN: LUIS ALVAREZ

J. S. BACH
(1685-1750)

$\text{♩} = 140$

8

10

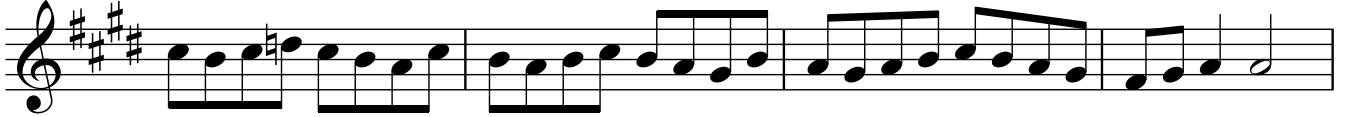
14

16

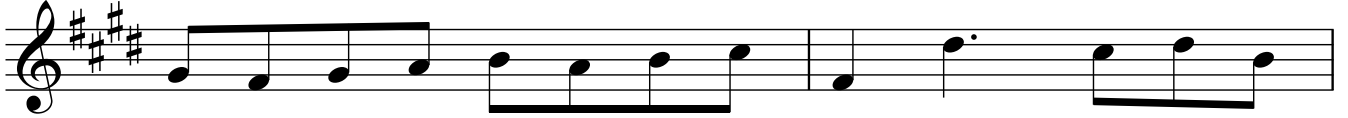
19

23

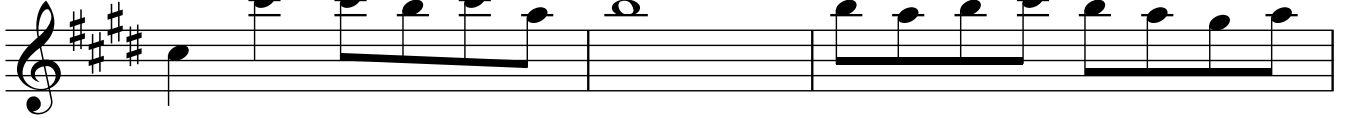
28



32



34



37



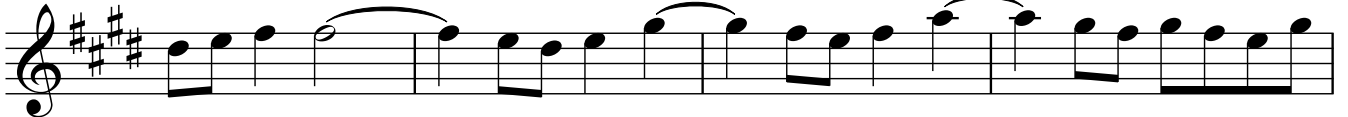
42



46



51



55



59



Violín

61

64

69

73

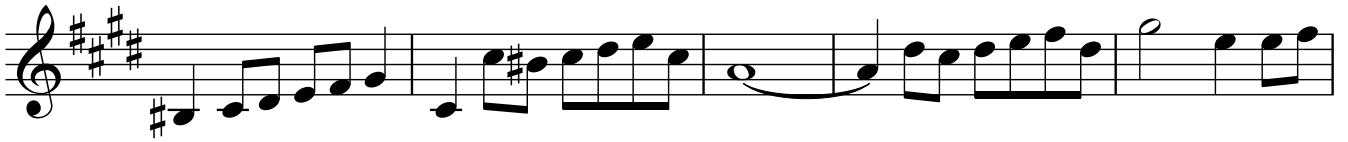
78

82

85

88

91



96



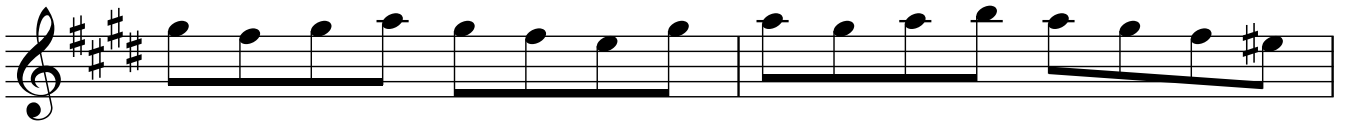
100



104



107



109



113



118



121

122



125



127



131



134



136



139



142

