

Guitarra 1

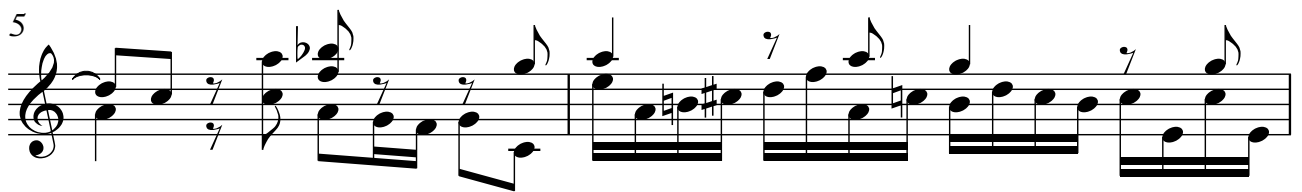
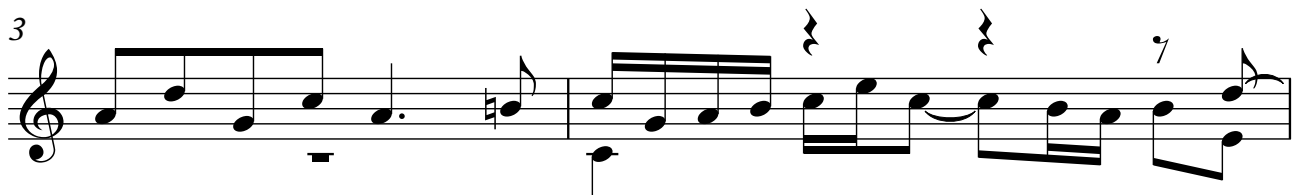
BWV - 545a

PRELUDIO Y FUGA

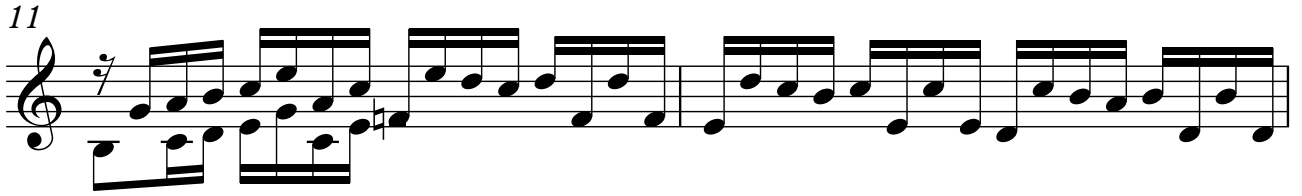
1 - PRELUDIO

TRANSCRIPCIÓN: LUIS ALVAREZ

J. S. BACH
(1685-1750)

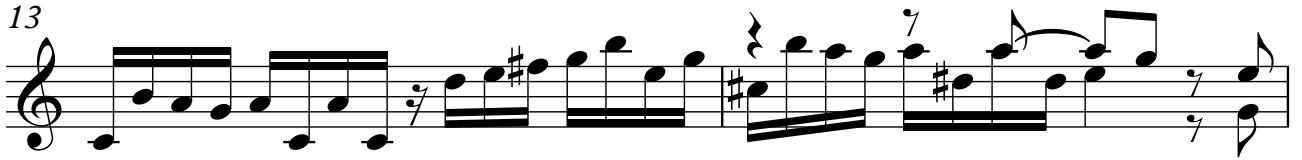


11



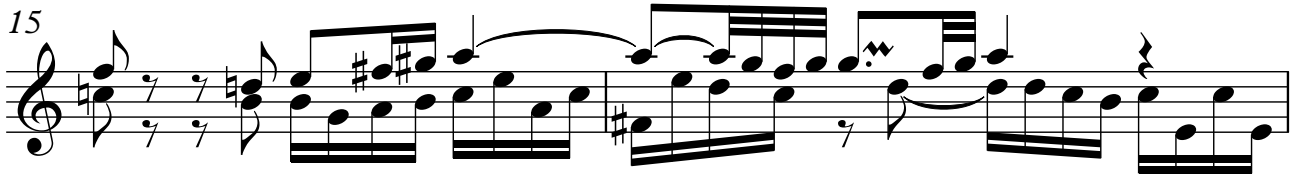
Musical notation for measures 11 and 12. Measure 11 features a rhythmic pattern of eighth notes in the treble clef and a bass line of eighth notes. Measure 12 continues this pattern with a key signature change to one sharp (F#).

13



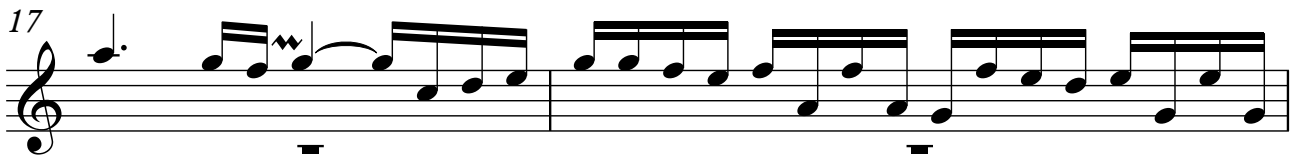
Musical notation for measures 13 and 14. Measure 13 continues the eighth-note pattern. Measure 14 features a melodic line with a slur and a key signature change to two sharps (F# and C#).

15



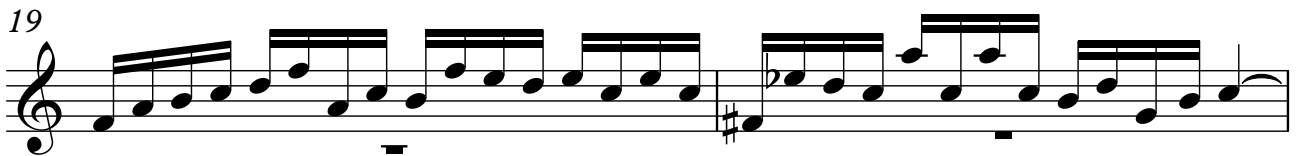
Musical notation for measures 15 and 16. Measure 15 has a complex bass line with chords and eighth notes. Measure 16 features a melodic line with a slur and a key signature change to one sharp (F#).

17



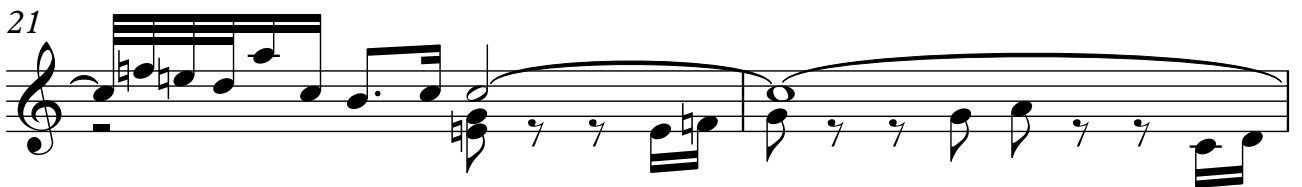
Musical notation for measures 17 and 18. Measure 17 has a melodic line with a slur and a key signature change to one sharp (F#). Measure 18 continues with eighth-note patterns.

19



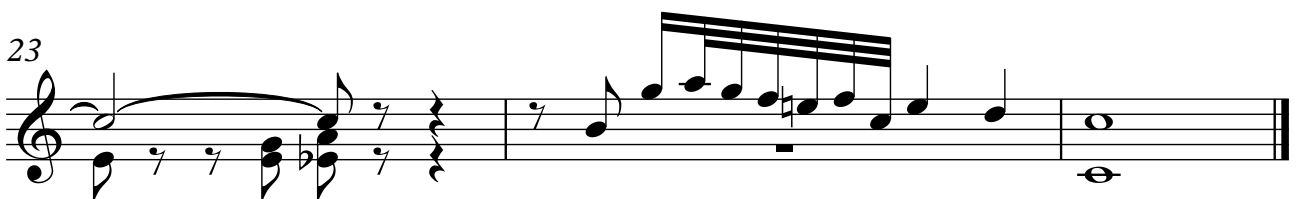
Musical notation for measures 19 and 20. Measure 19 features eighth-note patterns. Measure 20 has a melodic line with a slur and a key signature change to two sharps (F# and C#).

21



Musical notation for measures 21 and 22. Measure 21 has eighth-note patterns. Measure 22 features a long melodic slur over a bass line of chords and eighth notes.

23



Musical notation for measures 23 and 24. Measure 23 has a melodic line with a slur and a key signature change to one sharp (F#). Measure 24 concludes with a final chord and a whole note.