

PREMIERE SYMPHONIE.

I.

A. ARENSKY, Op. 4.

Oboe I.

Adagio. 1 7 8 A 2

Allegro pathetico. B C 2 2 D 4 E 14 1. 10 F 16 G 5 4 #2 2 2 I 24

ff *f* *ff* *ff* *pp* *p* *pp* *pp* *pp*

EDWIN F. KALMUS & Co., INC.
Music Publishers

30 5-1/2



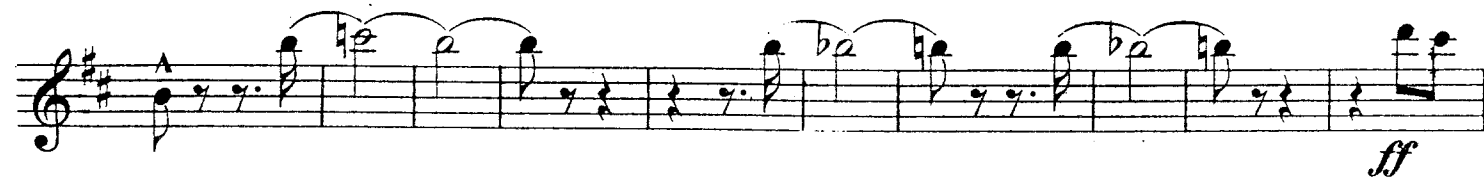
670.88
135 / A6815



Oboe I.

The musical score for Oboe I consists of ten staves of music. The first staff begins with a treble clef, a key signature of two sharps (F# and C#), and a 2/4 time signature. It features a dynamic of *p* (piano) and a marking **R 6**. The second staff continues with dynamics of *mf* (mezzo-forte) and *ff* (fortissimo), and includes a marking **L**. The third staff has dynamics of *f* (forte) and *ff*, with a marking **M**. The fourth staff features a dynamic of *ff* and a marking **N 20 0**. The fifth staff has a dynamic of *ff* and a marking **P**. The sixth staff includes dynamics of *ff* and *ff*, with markings **6 Q 24 R** and **1**. The seventh staff has a dynamic of *ff* and a marking **1**. The eighth staff begins with a dynamic of *ff* and a marking **S**, followed by a tempo change to **Adagio.** and a dynamic of *fff* (fortississimo). The ninth staff is marked **Allegro pathetico.** and features dynamics of *ff*, *f*, and *cresc.* (crescendo), with a marking **T**. The tenth staff has a dynamic of *ff* and a marking **U**. The final staff continues with a dynamic of *ff*.

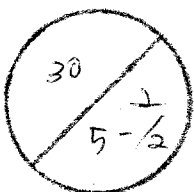
Oboe I.



670.88
135

/ A6815

악보



II.

Oboe I.

Andante pastorale con moto.

The musical score for Oboe I consists of ten staves of music. The key signature is one sharp (F#) and the time signature is 6/8. The tempo is marked "Andante pastorale con moto". The score includes various dynamics such as *mf*, *pp*, *f*, *p*, *ff*, *p*, *mf*, *sf*, *mf*, *cresc.*, *pp*, and *mf*. Performance markings include accents, slurs, and hairpins. The score is divided into sections labeled with letters and numbers: A 3, B 9, C 10, D 11, E 3, F 16, G 3, H 16, I 8, L, M, N 8, and O 12. The notation includes eighth and sixteenth notes, rests, and various articulations.

Scherzo.

Oboe I.

Allegro con spirito.

Musical notation for Oboe I, first system. It consists of two staves. The first staff starts with a treble clef, a key signature of one sharp (F#), and a 5/4 time signature. It contains several measures of music with dynamic markings of *ff* and *f*. There are first ending brackets labeled '1' and a section labeled 'A'. The second staff continues the melody with dynamic markings of *f* and *p*, and a section labeled 'B'.

Meno mosso.

Musical notation for Oboe I, second system. It consists of two staves. The first staff has a treble clef, a key signature of two sharps (F# and C#), and a 5/4 time signature. It includes first ending brackets labeled '1', '1. 3', and '2.', and a section labeled 'C'. Dynamic markings include *ff* and *p*. The second staff continues with dynamic markings of *p* and a section labeled '8'.

Animato.

Musical notation for Oboe I, third system. It consists of two staves. The first staff has a treble clef, a key signature of three sharps (F#, C#, and G#), and a 5/4 time signature. It includes first ending brackets labeled '1' and a section labeled 'D'. Dynamic markings include *f* and *p*. The second staff continues with dynamic markings of *ff* and *f*, and a section labeled 'F'.

Musical notation for Oboe I, fourth system. It consists of two staves. The first staff has a treble clef, a key signature of three sharps (F#, C#, and G#), and a 5/4 time signature. It includes first ending brackets labeled '1' and a section labeled 'G'. Dynamic markings include *ff* and *f*. The second staff continues with dynamic markings of *ff* and *mf*, and a section labeled 'H'.

Musical notation for Oboe I, fifth system. It consists of two staves. The first staff has a treble clef, a key signature of three sharps (F#, C#, and G#), and a 5/4 time signature. It includes first ending brackets labeled '1' and a section labeled 'I'. Dynamic markings include *mf* and *p*. The second staff continues with dynamic markings of *p* and *ff*, and a section labeled 'K'.

Musical notation for Oboe I, sixth system. It consists of two staves. The first staff has a treble clef, a key signature of three sharps (F#, C#, and G#), and a 5/4 time signature. It includes first ending brackets labeled '1' and a section labeled 'L'. Dynamic markings include *ff* and *p*. The second staff continues with dynamic markings of *pp* and *ff*, and a section labeled 'M'.

Finale.

Oboe I.

Allegro giocoso.

ff

p

ff

ff

fff

Meno mosso.

p

f

ff

pp

ff

Oboe I.

I 1 *ff* 5 K *ff*

1 L 3 *ff*

5 M 3 *ff* 4 *ff* N 4 *pp*

3 0 8 P 6 *ff*

5 Q 3 *ff*

tr 2 *ff* R *p*

3 *tr* *tr* *ff* S

1 5 T 7 U *ff* 8

V *ff* 6

Oboe I.

W

2 2

p *f*

X

1 1

f *ff*

Y

1 1 1

Z

f *ff* *f*

AA 11 BB

ff *ff*

CC

DD 8 2 EE

ff *ff*

FF

1 1

4

fff