



THE LORD IS  
MY SHEPHERD

— — — — —  
SACRED SONG.  
— — — — —

H. Lane Wilson.

LONDON  
*Novello & Co., Ltd.*

# NOVELLO'S NEW AND POPULAR SONGS

PUBLISHED IN KEYS TO SUIT THE VOICES SPECIFIED BELOW.

*PRICE TWO SHILLINGS EACH, NET.*

<p>PLEADING. By Sir EDWARD ELGAR. Suitable for All Voices. Sung by Mr. KENNERLEY RUMFORD.</p>	<p>ROLLING DOWN TO RIO. By EDWARD GERMAN. Suitable for Baritones or Basses. Sung by Mr. KENNERLEY RUMFORD.</p>
<p>THE TORCH. By Sir EDWARD ELGAR. Suitable for All Voices. Sung by Mr. JOHN COATES.</p>	<p>GENTLE DOVE. By Sir ALEXANDER MACKENZIE Suitable for Sopranos. Sung by Madame ALBANI.</p>
<p>THE RIVER. By Sir EDWARD ELGAR. Suitable for All Voices. Sung by Mr. HAIGH JACKSON.</p>	<p>EIGHTEEN SONGS. (Three Books.) By Sir ALEXANDER MACKENZIE. Suitable for All Voices.</p>
<p>OH, SOFT WAS THE SONG. By Sir EDWARD ELGAR. Suitable for Mezzo-Sopranos. Sung by Miss MURIEL FOSTER.</p>	<p>POUR FORTH NOBLE WINE. By Sir ALEXANDER MACKENZIE. Suitable for Baritones. Sung by Mr. DALTON BAKER.</p>
<p>ELEANORE. By COLERIDGE-TAYLOR. Suitable for Tenors or Baritones. Sung by Mr. JOHN COATES and Mr. FRANK WEBSTER.</p>	<p>TO WELCOME YOU. By A. GORING-THOMAS. Suitable for Sopranos or Contraltos. Sung by Miss ADA FORREST.</p>
<p>SONS OF THE SEA. By COLERIDGE-TAYLOR. Suitable for Baritones. Sung by Mr. EDMUND BURKE.</p>	<p>IT WAS A LOVER AND HIS LASS. By FREDERIC AUSTIN. Suitable for All Voices. Sung by Miss PERCEVAL ALLEN.</p>
<p>LOVE IS A BABLE. By Sir HUBERT PARRY. Suitable for Baritones or Basses. Sung by Mr. PLUNKET GREENE.</p>	<p>TWELVE DAYS OF CHRISTMAS. By FREDERIC AUSTIN. Suitable for Baritones. Sung by Mr. KENNERLEY RUMFORD.</p>
<p>ENGLISH LYRICS. (Nine Sets.) By Sir HUBERT PARRY. Suitable for All Voices.</p>	<p>THE OULD PLAID SHAWL. By BATTISON HAYNES. Suitable for All Voices.</p>
<p>SWEET NIGHT. By ERNEST AUSTIN. Suitable for Mezzo-Sopranos.</p>	<p>CAVALIER SONG. By HEALEY WILLAN. Suitable for Baritones.</p>
<p>COME TO ME, GENTLE SLEEP. By JOHN POINTER. Suitable for Sopranos or Tenors.</p>	<p>THREE SONGS. By NORAH MARRIOTT. a. April. b. June. c. October. Suitable for Sopranos or Mezzo-Sopranos.</p>

LONDON: NOVELLO AND COMPANY, LIMITED.

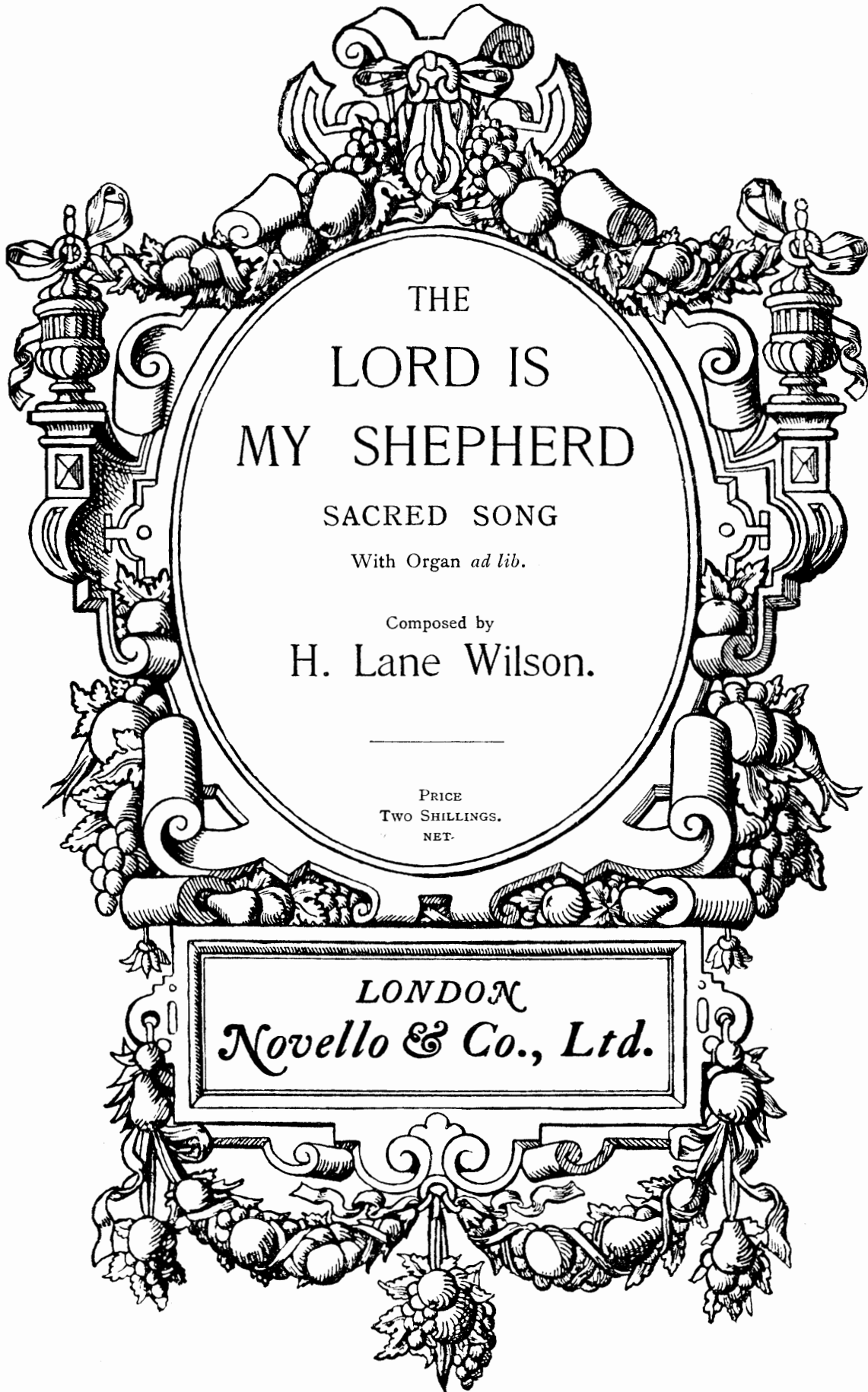
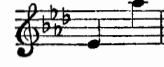
In E flat.



In F.



In A flat.



THE  
LORD IS  
MY SHEPHERD

SACRED SONG

With Organ *ad lib.*

Composed by

H. Lane Wilson.

PRICE  
TWO SHILLINGS.  
NET.

LONDON  
*Novello & Co., Ltd.*



# THE LORD IS MY SHEPHERD.

H. Lane Wilson.

*Maestoso.* *mf*

ORGAN.

*Maestoso.* ♩ = 96. *f* *sf*

The Lord is my shep-herd:

*poco accel.*

I shall not want. The Lord is my shep-herd: I shall not want. He

*a tempo* *poco accel.* *mf* *a tempo* *p*

mak - eth me to lie down in green pas - tures: He lead-eth me be -

*P* *mf*

13738a

Copyright, 1912, by Novello & Company, Limited.

*rit.* *rall.*

- side the still wa - ters, He re - fresh - eth my soul. ——— The

*pp* *cresc.* *rall.*

Lord is my shep - herd: I shall not want.

*mf a tempo* *f* *sf*

Yea, though I walk through the val - ley of the sha - dow of death

I will fear no e - vil, ——— For Thou art with me; For Thou art

*rit.*

with me — Thy rod and Thy staff, They com - fort, com - fort

*pp* Vox Celeste  
*colla voce*

*a tempo*

me. — The Lord is my shep - herd: I shall not want. The

Piano.  
*PP a tempo*

*poco accel.* *f* *a tempo*

Lord is my shep - herd: I shall not want. — For Thou art with me;

*cresc.* *poco accel.* *f a tempo*

*allargando* *f*

Thou art with me; I shall not, shall not want. —

*ff allargando*





## THE LORD IS MY SHEPHERD.

---

The Lord is my Shepherd : I shall not want,  
He maketh me to lie down in green pastures,  
He leadeth me beside the still waters,  
He refresheth my soul.  
Yea, though I walk through the valley of the shadow of death,  
I will fear no evil, for Thou art with me,  
Thy rod and Thy staff,  
They comfort me.

# THE LORD IS MY SHEPHERD.

H. Lane Wilson.

*Maestoso.* ♩ = 69. *mf*

The Lord is my shep-herd:

*ff* *sf* *mf sostenuto*

*poco accel.*

I shall not want. The Lord is my shep - herd: I shall not want. \_\_\_\_\_

*poco accel.*

*poco accel.*

*p a tempo* , *poco accel.*

He mak - eth me to lie down in green pas - tures

*p a tempo* *poco accel.*

*mf a tempo* *P*

He lead - eth me be - side the still wa-ters,

*mf a tempo dim.* *P*

*f* *rall.* *P*

He re - fresh-eth my soul. The Lord is my shep - herd:

*cresc.* *rall.* *ten.* *P*

*con Ped.*

I shall not want.

*ff* *f*

*mf deciso*

Yea, though I walk through the val - ley of the

*mf*

*P* *f*

sha - dow of death, I will fear — no

*cresc.* *f*

*poco accel.* *f* *a tempo*

e - vil. \_\_\_\_\_ For Thou art with me; For

*poco accel.* *cresc.* *f a tempo*

*poco accel.* *f* *ten.*

Thou art with me; \_\_\_\_\_ Thy rod and Thy staff, They

*sf* *poco accel.* *sf colla voce* *sf* *ten.*

*p* *rall.* *a tempo* *rit.*

com - fort, com - fort me. \_\_\_\_\_ The

*colla voce* *a tempo* *rit.*

*a tempo*

Lord is my shep - herd: I shall not want. The Lord is my shep - herd:

*mf a tempo*

*poco accel.* *f* *a tempo*

I shall not want. \_\_\_\_\_ For Thou art with me,

*cresc.* *poco accel.* *cresc.* *f a tempo*

*f* *allargando* *f*

Thou art with me; I shall not, shall not want. \_\_\_\_\_

*ff allargando* *a tempo ff* *fff*

# NOVELLO'S NEW AND POPULAR SONGS

PUBLISHED IN KEYS TO SUIT THE VOICES SPECIFIED BELOW.

PRICE TWO SHILLINGS EACH, NET.

GALLOPING DICK. By PERCY E. FLETCHER. Suitable for Baritones or Basses.	FAIRY VOICES. By ERNEST NEWTON. Suitable for Sopranos or Contraltos.
LOVE IN THE MEADOWS. By PERCY E. FLETCHER. Suitable for Sopranos or Contraltos.	WHERE THE CHILDREN SLEEP. By A. KINGSTON STEWART. Suitable for Contraltos or Baritones.
SOME PERFECT ROSE. By PERCY E. FLETCHER. Suitable for All Voices.	A SOUL. By A. KINGSTON STEWART. Suitable for Tenors,
TO ALTHEA. By C. HARFORD LLOYD. Suitable for Baritones.	HOMEWARD. By HAMILTON HARTY. Suitable for Baritones or Basses.
WITH ALL MY HEART. By WALTER EARNSHAW. Suitable for All Voices.	IF BUT 'T WERE MINE. By J. D. DAVIS. Suitable for All Voices.
THE CAMEL'S HUMP. By EDWARD GERMAN. Suitable for All Voices.	SONG OF THE PILGRIMS. By EMMELINE BROOKE. Suitable for All Voices.
ON A SUMMER'S DAY. By CECIL ENGELHARDT. Suitable for All Voices.	HELIODORE. By BOTHWELL THOMSON. Suitable for Tenors or Baritones.
LOVE'S MORNING SONG. By CHARLES DEACON. Suitable for All Voices.	COME BACK! By H. ARNOLD SMITH. Suitable for All Voices.
THREE CRADLE SONGS. By MARY DE MONTFITCHET. Suitable for Sopranos or Mezzo-Sopranos.	MIRAGE. By W. H. REED. Suitable for Mezzo-Sopranos or Baritones.
JESU, LOVER OF MY SOUL. By W. H. WAREING. Suitable for Contraltos or Baritones.	SHOULD ONE OF US REMEMBER. By W. H. REED. Suitable for Mezzo-Sopranos or Baritones.
SWEET EVENINGS COME AND GO. By S. COLERIDGE-TAYLOR. Suitable for All Voices.	A MORNING SONG. By ERNEST AUSTIN. Suitable for Baritones.

LONDON: NOVELLO AND COMPANY, LIMITED.

# NOVELLO'S NEW AND POPULAR SONGS

PUBLISHED IN KEYS TO SUIT THE VOICES SPECIFIED BELOW.

*PRICE TWO SHILLINGS EACH, NET.*

<p>ZUMMERZETZHIRE. (Old Song.)            Arranged by ERNEST NEWTON.            Suitable for Baritones or Basses.            Sung by Mr. CHARLES TREE and            Mr. ALEXANDER TUCKER.</p>	<p>LOVE IS FOR EVER.            By ERNEST NEWTON.            Suitable for All Voices.            Sung by Mr. HAIGH JACKSON and            Mr. HENRY BEAUMONT.</p>
<p>REMEMBRANCE AND REGRET.            By ERNEST NEWTON.            Suitable for All Voices.            Sung by Miss VIOLET LUDLOW and            Mr. JOSEPH REED.</p>	<p>CHEERILY O!            By JOHN E. WEST.            Suitable for All Voices.            Sung by Mr. JOHN COATES and            Mr. ROBIN OVERLEIGH.</p>
<p>DOWN CHELSEA WAY.            By HENRY COATES.            Suitable for Baritones or Basses.            Sung by Mr. ROBERT RADFORD.</p>	<p>THE SONGSTERS' AWAKENING.            (Vocal Waltz) By PERCY E. FLETCHER.            Suitable for Sopranos.            Sung by Miss ALYS BATEMAN.</p>
<p>SING, BRITAIN'S SONS.            By CHARLES HARRISS.            Suitable for Baritones or Basses.            Sung by Mr. DALTON BAKER.</p>	<p>SONGS OF FRIENDSHIP.            By REGINALD SOMERVILLE.            Suitable for All Voices.            Sung by the COMPOSER.</p>
<p>YOUR DEAR HEART.            By WILTON KING.            Suitable for All Voices.            Sung by Mr. CHARLES COPLAND.</p>	<p>TWO SONGS. By NOEL JOHNSON.            a. "TAKE THOU THIS ROSE."            b. "AFFINITY."            Suitable for All Voices.</p>
<p>MY HEART A-DREAM.            By A. W. KETELBEY.            Suitable for All Voices.            Sung by Mr. HARRY THORNTON.</p>	<p>THE SECRET OF LOVE.            By FELIX CORBETT.            Duet for Contralto and Baritone (or Tenor).            Sung by Madame CLARA BUTT and            Mr. KENNERLEY RUMFORD.</p>
<p>THE HEART'S AWAKENING.            By A. W. KETELBEY.            Suitable for All Voices.</p>	<p>FAR FROM MY HEAVENLY HOME.            By E. J. MARGETSON.            Suitable for All Voices.</p>
<p>THERE IS A GREEN HILL.            By CHARLES GOUNOD.            Suitable for All Voices.            Sung by Sir CHARLES SANTLEY.</p>	<p>LEAD, KINDLY LIGHT.            By PUGHE-EVANS.            Suitable for All Voices.            Sung by Mr. HAIGH JACKSON.</p>

LONDON: NOVELLO AND COMPANY, LIMITED.