

148711



INVOCATION

Song

Poem by
F·G·BOWLES

Music by
JAMES H·ROGERS

50
NET

HIGH in A \flat
* MEDIUM in G \flat
MEDIUM in F
LOW in E \flat

M
1621
1770-2

Published by Sam Fox Publishing Co. Cleveland
EUROPEAN REPRESENTATIVE, BOSWORTH & CO.

INVOCATION

Dark night that closeth on a day of care,
Bring to the weary gentle sleep and rest;
Dream flowers divine, and roses ever fair,
Then art thou blest, then art thou blest.

Dear dawn that riseth on a world of peace,
Making the round of night and day complete;
Just for to-day may sin and sorrow cease,
Then art thou sweet, then art thou sweet.

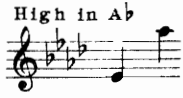
F. G. Bowles.

To Mrs. F. S. McCullough
INVOCATION

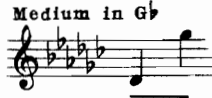
Words by
 F. G. BOWLES

Music by
 JAMES H. ROGERS

High in A \flat



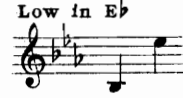
Medium in G \flat



Medium in F



Low in E \flat



Slowly and expressively

p

Dark night that clos - eth on a day of care,

p dolce

Bring to the wear - y gen - tle sleep and rest; Dream flow'rs di-vine, and

poco cresc. ma sempre dolce

mp *p*

ros - es ev - er fair, Then art thou blest, - then art thou blest.

mp *p*

p

Dear dawn that ris - eth on a world of peace,

pp ben sostenuto

*ped. * ped. * ped. * ped. * ped. **

Mak-ing the round of night and day com-plete; Just for to-day may

mp *pp rit.*

sin and sor-row cease, Then art thou sweet, then art thou sweet.

mp *pp rit.*

148711

*ped. **