

THE ROSARY

[LE CHAPELET : DER ROSENKRANZ]

WORDS BY ROBERT CAMERON ROGERS

ENGLISH, FRENCH, AND GERMAN TEXT. SET TO MUSIC BY

ETHELBERT NEVIN



I

*The hours I spent with thee, dear heart,
Are as a string of pearls to me;
I count them over ev'ry one apart,
My rosary, my rosary!*

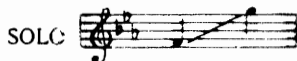
II

*Each hour a pearl, each pearl a pray'r
To still a heart in absence wrung:
I tell each bead unto the end,
And there a Cross is hung!*

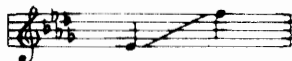
III

*O, memories that bless and burn!
O barren gain and bitter loss!
I kiss each bead, and strive at last to learn
To kiss the Cross, sweetheart! to kiss the Cross.*

1. SOP. OR TEN. Eb, 60



2. MEZZO-SOP. OR BAR. D \flat , 60



3. ALTO OR BASS B, 60



- | | | | |
|--|--------|--------------------------------|-------|
| 4. Piano Solo (in book of "Melodies") | n 1.25 | 7. Military Band (Cornet Solo) | n .80 |
| 5. Orchestra Accompaniment, D \flat | n .80 | 8. Violin and Piano | .60 |
| 6. Orchestra (Cornet Solo) | n .80 | 9. Violoncello and Piano | .60 |
| 10. Quartet or Chorus for Mixed Voices | .15 | | |
| 11. Quartet or Chorus for Mixed Voices (Sop. or Ten. Solo) | .15 | | |
| 12. Quartet or Chorus for Men's Voices | .15 | | |
| 13. Quartet or Chorus for Men's Voices (Sop. or Ten. Solo) | .15 | | |
| 14. Quartet or Chorus for Women's Voices | .15 | | |
| 15. Piano Solo, arrangement by Benjamin Whelpley | .60 | | |

THE BOSTON MUSIC CO.

G. SCHIRMER, JR., BOSTON, MASSACHUSETTS

AGENTS FOR GREAT BRITAIN : CHARLES WOOLHOUSE, LONDON

AGENTS FOR AUSTRALIA : ALLAN & CO., MELBOURNE

12 OLD FRENCH SONGS

(WEKERLIN)

COMPLETE n. \$1.25

- 1 Tell me, Mother. (Maman, dites-moi.)
- 2 Sing on. (Chantons les amours de Jeanne.)
- 3 Naught do I believe. (Non, je ne crois pas.)
- 4 O Shepherd so fickle. (Bergère légère.)
- 5 Love takes Flight. (L'amour s'envole.)
- 6 My Little Heart. (Mon petit cœur soupire.)
- 7 Célimène. (Célimène.)
- 8 O Hasten, Ethereal Spring. (Venez, agréable printemps.)
- 9 Lizette. (Lizette.)
- 10 Paris is the King's. (Paris est au Roi.)
- 11 Ye Pretty Birds. (Petits oiseaux.)
- 12 I Wait for Night. (J'attends le soir.)

12 Old French Songs

with a piano part by Wekerlin (that world-known authority), selected and translated by George L. Osgood (none better for this task in every regard), constitute a tasteful paper-covered volume of some 45 pages in color, pleasing, on good heavy paper, and the cream of this literature.

The offering (at \$1.25 n.) is a notable one and will be of great interest in all respects to all lovers of song. These quasi folk-songs are naïve and charmingly archaic, and the piano version preserves and reproduces the same quaint flavor.

The taste for this class of song literature has steadily grown in the last few years, and very praiseworthy is that growth; nor is it confined to singers of mark, but is shared ardently by musicians and by those of literary turn of mind.

Hence the appearance of this volume is of great and wide-spread importance.

Sent postpaid to any address for \$1.00.

G. SCHIRMER, JR. THE BOSTON MUSIC CO. BOSTON, MASS.

The Rosary.

The hours I spent with thee, dear heart,
Are as a string of pearls to me;
I count them over ev'ry one apart,
My rosary, my rosary!

Each hour a pearl, each pearl a prayer
To still a heart in absence wrung:
I tell each bead unto the end,
And there a Cross is hung.

O, memories that bless and burn!
O, barren gain and bitter loss!
I kiss each bead, and strive at last to learn
To kiss the Cross, sweetheart! to kiss the Cross.

The Rosary.

Le Chapelet.

Der Rosenkranz.

Text by Robert Cameron Rogers.

French Version by Isadore Martinez.

German Version by Dr. Th. Baker.

Mezzo-Soprano or Baritone.

Music by
ETHELBERT NEVIN.

Voice.

The hours I spent with thee, dear heart,
 Nos heu - res in - ti - mes, ô ma chè - re,
 Die Stun - den, dir al - lein ge - - weiht,

Piano.

Red. *

Are as a string of pearls to me; I count them o - ver ev - 'ry
 Me semblent comme un fil per - lé; Je fais en le re - pas - sant,
 mir ist wie Per - len rein ihr Glanz, ich züh - le sie gar oft in

Piano.

Red. *

one a - part, My ro - sa - ry, my ro - sa - ry!
 ma pri - è - re, C'est de ma vi - e le cha - pe - let!
 Ein - sam - keit: mein Ro - sen - kranz, mein Ro - sen - kranz.

Piano.

m.g.
dolce

Orchestration & military band parts to be had of the Publisher.

Copyright, 1900, by G. Schirmer, jr.

Secured for all countries.

Copyright, 1908, by G. Schirmer, jr.

Each hour a pearl, each pearl a pray'r To still a heart in ab - sence
 Pour cal - mer ma dou - leur a - - mè - re, Je prie, en les contant, pour
 Und je - de Per - le ein Ge - - bet für's Herz, das sich nur seh - nen

wrung: I tell each bead un - to the end, And there a
 toi; Mais à la fin de mon ro - - sai - re Je trou - ve
 kann; ich sag' sie bis an's En - de her: da hängt ein

dolce

Cross is hung! O mem - o - ries that bless and
 u - ne eroix! O sou - ve - nirs pleins de re -
 Kreuz da - ran! Er - inn - rung, freud - und lei - den -

ff *molto tenuto* *quasi arpeggio* *p vibrato*

p. *dolciss.*

burn! O, bar-ren gain and bit-ter loss!
 greets! O bon-heur vain! O tris-te joi - e!
 voll! ö - der Ge - winn des Her - zens du!

patetico

sempre cresc.

I kiss each bead, and strive at last to learn To kiss the
 Je bai-se perle à per-le mon cha-pe-let, A-fin d'ap-
 Die Per-len küss' ich—ob ich küs-sen soll das Kreuz du -

accel. *Largo*

Cross, sweet-heart! to kiss the Cross.
 pren - dre bai-ser la croix.
 zu? Lieb - chen! das Kreuz da - zu?

So is my Love to me



FLORENCE EARLE COATES

CLAYTON JOHNS

Moderato

Voice

Piano

mf *mp* *mp*

As the

cresc.

moth - er bird to the wait - ing nest, As the reg - nant moon to the

p *cresc.*

f *dim.*

Sea, _____ As joy to the heart that has first been blest,

f *mp* *dim.*

A SELECT LIST OF

New Songs and Ballads by Modern Composers

FROM THE CATALOGUE OF

THE BOSTON MUSIC COMPANY

G. Schirmer

26 AND 28 WEST STREET, BOSTON, MASS.

Note.—Any of the compositions listed will be sent for examination

*Orchestra parts may be had of the publishers.

ARENSKY, A. BUT LATELY IN DANCE I EMBRACED HER. High D \flat (Sung by Mme. Sembrich)	Do+ AFTER WITHIN. Low C \sharp min.	GREENE, EDWIN THE BEAUTIFUL LAND OF NOD. (Violin or 'cello <i>ad lib.</i>) High G; Med. F; Med. E \flat ; Low D
. 60	THE INFINITE, SHINING HEAVENS. Bass or Bar. F 60
ATHERTON, PERCY LEE CRADLE SONG. Med. E	THE SLENDER WATER LILY. Med. G	*THE FLEETING YEARS. (Violin or 'cello <i>ad lib.</i>) High A; Med. G; Med. F; Low E \flat
. 50 50 60
FLY, THISTLEDOWN, FLY. High G	CONVERSE, F. S. ADIEU. (Rossetti) Med. E	IF SHE BUT KNEW. High G; Med. F; Med. E \flat ; Low D
. 60 60 60
IN APRIL. High G \flat	ASK ME NO MORE. High F	*I KNOW A LANE IN SPRINGTIME. (Violin or 'cello <i>ad lib.</i>) High B \flat ; Med. A \flat ; High G; Low F
. 60 60 60
OH, LIKE A QUEEN. High E \flat ; Low D \flat	BRIGHT STAR. Bar. A \flat	I REMEMBER, I REMEMBER. High A; Med. G; Med. F; Low E \flat
. 50 60 60
SERENADE. High D \flat	ECHO. High A \flat	LULLABY LAND. (Violin or 'cello <i>ad lib.</i>) High B \flat ; Med. A \flat ; Med. G; Low F
. 60 60 60
THE THRUSH SINGS HIGH ON THE TOPMOST BOUGH. High E	INDIAN SERENADE. Bar. D \flat	THE MUSIC THAT CAME WITH THE MAY. High B \flat ; Med. A \flat ; Med. G; Low F
. 60 60 60
'TIS NOT IN SEEKING. Med. D	*LA BELLE DAME SANS MERCI. (After the poem by Keats) Bar. A min.	*SING ME TO SLEEP. (Violin or 'cello <i>ad lib.</i>) High E \flat ; Med. D; Med. C; Low B \flat
. 50 1.50 75
WHEN BIRDS WERE SONGLESS ON THE BOUGH. High A \flat	*LOVE WITHIN THE LOVER'S BREAST. Bar. E	SPRINGTIDE. High A; Med. G; Med. F; Low E \flat
. 50 60 60
BIRCH, J. EDGAR WOULD YOU? (Encore) Med. D	SILENT NOON. Med. F	SWEET EILEEN. High G; Med. F; Med. E \flat ; Low D
. 40 60 60
BLUMENSCHNEIN, W. L. IT IS FINISHED. (Easter) High B \flat ; Low F	DANDRIDGE, M. E. IN MY HEART'S LAND. High D; Med. C; Med. B \flat ; Low A	THERE IS A GARDEN. High G; Med. F; Med. E \flat ; Low D
. 50 60 60
BÖHR, FRANCIS LEAD, KINDLY LIGHT. (Sacred) High F; Med. E \flat ; Low D	EXERCISES IN SIGHT-SINGING. (Solfeggio.) From the older masters, edited by S. W. Cole and others	*THERE LET ME REST. (Violin or 'cello <i>ad lib.</i>) High G; Med. E \flat ; Med. D; Low C
. 60 60 60
BONHEUR, THEO. THE CITY DIVINE. (Sacred) High G; Med. D; Med. E \flat ; Low F	FIELD, J. T. GOD SHALL WIPE AWAY ALL TEARS. (Sacred) Med. A \flat ; Low F	*VOICES OF THE PAST. (Violin or 'cello <i>ad lib.</i>) High F; Med. E \flat ; Med. D; Low C
. 75 60 75
BRAINARD, H. L. THE BLACKBIRD. High E \flat ; Med. D \flat	FORD, JAMES S. BEL' AMIE. Ten. G	HAMILTON, CLAUDE THE SWEET SCENT OF THE MIGNONETTE. High A; Med. G; Low F
. 50 50 60
THE COMFORTER. (Children) Med. E \flat	THE ISLAND WHERE BABIES GROW. Med. C	HARLING, W. FRANK TWILIGHT. High F
. 50 50 40
FOR YOU. Low F	THE LAND OF THE PUPPY-DOGS. Med. D	HEMBERGER, THEO. SOMETIME. High A \flat
. 50 50 50
FOUR CHILDHOOD RYMES	LUCY. Ten. F	WEEP NOT FOR ME, BUT WEEP FOR YOUR- SELVES. (Sacred) High C min.; Low A min.
n. 75 50 60
1. Juliette. 2. The Kitty. 3. The Dark. 4. When Daddy was a Little Boy	THE POLAR BALL THAT WAS SIX MONTHS LONG. Med. D	HILL, EDWARD BURLINGAME IN KENSINGTON GARDENS. High D
JEWEL SONGS. (4) 50 50
n. 1.00	WHERE KITTY-CATS HANG IN A ROW. Med. E \flat	PEACE AT NOON. High E
PLAYMATES. (Children.) High A \flat ; Low G 50 50
. 50	A WORD OF THINE. Ten. G	SPRING TWILIGHT. High G \sharp min.
A WIDOW BIRD. Med. A min.; Low G min. 50 50
. 50	FORSYTH, CECIL REMEMBER. Med. or Low F	JERVIS-READ, H. WHITE PEARL. High G; Med. F
YESTERDAY. High A \flat 50 60
. 50	GAUL, HARVEY B. FRIAR'S SONG. Bass B \flat	JOHNS, CLAYTON FLOWER OF THE RUE. High E \flat ; Med. C
BROGI, RENATO OPHELIA'S SONG. High E; Med. D. (I. and E.) 50 50
. 60	GERICKE, WILHELM AWAKE, THOU PRETTY DREAMER. High E \flat	I CANNOT HELP LOVING THEE. High E; Med. D; Low C
THE SONG-MAIDEN. High G; Med. F. (I. and E.) 50 50
. 60	THE QUESTION. High F	LET ME NOT WAIT. High D \flat ; Med. B \flat
THE SONG OF SATAN. Bass E min. 50 50
. 75	THE SUN IN ALL ITS GLORY. High G \flat	THE MOON OF ROSES. Med. D \flat
THE TRAIN FILES ON. High F; Med. E. (I. and E.) 50 50
. 60	WHAT I LOVE. High E \flat	SING TO ME, SING. Med. F
BROOME, EDWARD CUPID'S MISTAKE. Med. D \flat	GOUNOD, CHARLES CROSS OF CALVARY. (Violin obligato) High B \flat ; Med. A \flat ; Med. G; Low F	*WHERE BLOOMS THE ROSE. (Violin or 'cello obligato) High F; Med. D
. 50 60 60
GOD KEEP YOU, LOVE! High E; Med. A; Low C	GENTLE, HOLY SAVIOUR. (Sacred) High G; Med. F; Med. E \flat ; Low D	JOHNSON, NOEL IF THOU WERT BLIND. (E., F. and G.) High B min.; Med. A min.; Med. G min. Med. F min.; Low D min.
. 60 60 60
CLOUGH-LEIGHTER, H. AN APRIL HEART. (Song Cycle) Artist's Edition	*HOLD THOU MY HAND. (Sacred) High E; Med. D; Med. C; Low B \flat	PEACE OF GOD. High E \flat ; Med. D; Med. C; Low B \flat
n. 1.25 75 60
AN APRIL HEART. (Song Cycle) Modified Edition	PEACE OF GOD. High E \flat ; Med. D; Med. C; Low B \flat	*ROCK OF AGES. High F; Med. E; Med. D; Low C
n. 1.25 60 60
GIFT O' GOD. Low E \flat	*THE SANDS OF TIME ARE SINKING. High F; Med. E \flat ; Med. D; Med. C	THE ASRA. High C; Low A \flat
. 50 60 50
GLADNESS OF SPRING. High A	GOW, GEORGE COLEMAN THE ASRA. High C; Low A \flat	ROSES. High G; Low E
. 60 50 50
HILLS O' SKYE. High G	GRANT, E. M. *SPRING. High G	GRANT, E. M. *SPRING. High G
. 60 60 60
*MY LADY CHLO'. High E min.; Low C \sharp min.	LANDSBERG, SIGMUND DRY YO' EYES. High F; Low D	LINES. Med. D
. 50 50 50
*MY LOVER HE COMES ON THE SKEE. High B \flat min.; Me l. G min.	THE SYMPHONY. High F 50
. 50		
O WOULD I WERE THE COOL WIND. High E \flat		
. 50		
ROSEEN-DHU. High E \flat		
. 60		
TWILIGHT SADNESS. Med. A \flat		
. 50		
A VOW. High G		
. 40		
WHEN LOVE ABIDES. High D; Med. C		
. 50		

THEMATIC HANDBOOKS containing 40 English ballads and 22 sacred songs, providing a convenient means of choosing the most attractive compositions in these classes, will be sent to any address without expense.