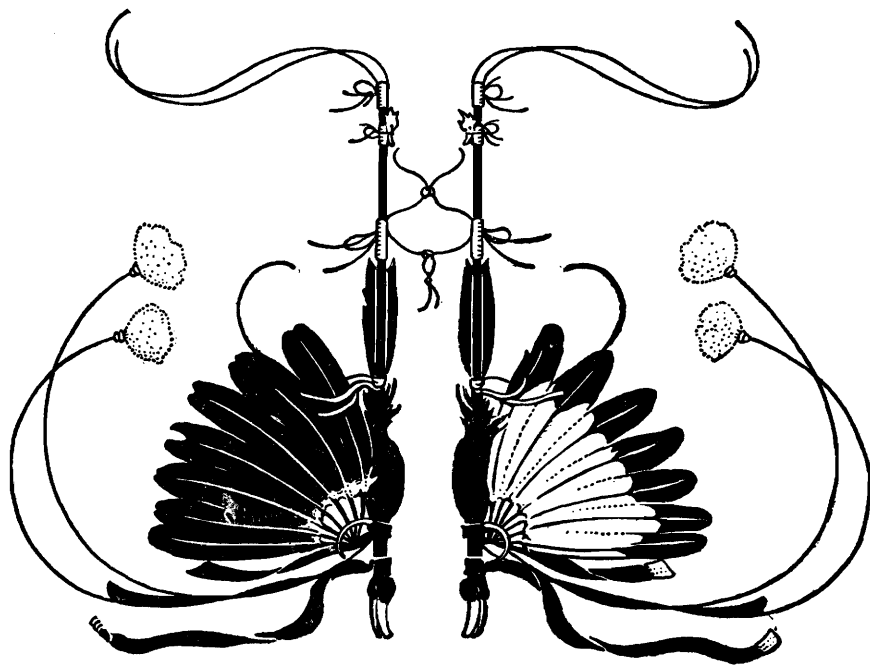


THE WAWAN-PRESS



ISRAFEL

BY

EDGAR STILLMAN KELLEY

PRICE \$1.00

NEWTON-CENTER
MASSACHUSETTS

To ROBERT FRANZ.
ISRAFEL.

Poem by
EDGAR ALLAN POE.

Music by
EDGAR STILLMAN KELLEY.
Op. 8. No. 2.

VOICE. *Lento.* (♩=69) *mf*

PIANO. *una corda pp* *In* *tre corde.*

Red. * Red. * Red. * Red. *

Heav'n a spirit doth dwell, "Whose heart strings are a lute?" None

Red. * Red. * Red. * Red. * Red. * Red. * Red. * Red. *

sing so wildly well as the an - gel Is - ra - fel,

poco cres. *- - - cen - do, f dim.* *mf* *dim.*

Red. * Red. * Red. * Red. * Red. * Red. * Red. * Red. * Red. * Red. * Red. * Red. *

CLOSED
SHELF
M
1621
K29Is

p

And the

pp

p

Red. - - - * Red. * Red. * Red. * Red. * Red. *

mf *cresc.*

giddy stars, so legends tell, Ceas-ing their hymns, at - tend the spell of his

mf Arpa *cresc.*

Red. * Red. * Red. * Red. * Red. * Red. * Red. * Red. * Red. *

dim - in - u - en - do molto rit.

voice, at-tend the spell of his voice, all mute.

dim - in - u - en - do molto rit.

Red. * Red. * Red. * Red. * Red. * Red. * Red. * Red. * Red. * *cresc. accel.*

a tempo

f *mf* *molto dim. e accel.*

Red. * Red. * Red. * Red. *

Faster. (♩ = 108) *solo voce.*

Tot-ter-ing a-bove In her high - est noon, The en - amoured moon blush-es with

pp

una corda.

love, While, to list-en, The red lev-in With the

p

ra - - pid Plei - ads, ev-en, which were seven, Paus - - es in

molto rit -

Heaven! Paus - - es in Heaven! And they

a tempo p

a tempo pp

say, the star - - ry choir And the oth - - er listen - - ing

pp *poco - - a - poco* *cres -*

things. That Is - - ra - fel - - is fire Is

cen - - do *e - - ae - cel - - er - an -*
tre corde.

ow - - ing to ___ that lyre By which ___ he sits ___ and

do -

sings The tremb - - ling liv - - ing wire ___ Of

f those un - - - us - - - ual *ff* strings, Of

f *ff*

Red. * Red. * Red. * Red. * Red. * Red. * Red. *

those un - - - us - - - ual strings.

f *ff* *molto rit. e dim.* *long.* *p*

Red. * Red. * Red. * Red. * Red. * Red. * Red. *

Tempo I.

pp

L.H.

Red. * Red. * Red. * Red. *

poco animato.

The ec-sta-cies a--bove With thy

mf *accel.*

♩. * ♩. * ♩. * ♩. * ♩. *

burn-ing measures suit, Thy grief, thy joy, thy hate, thy love, Well

poco - - a - - poco - - f - - cres - - cen - - do - -

♩. * ♩. * ♩. * ♩. * ♩. * ♩. * ♩. * ♩. * ♩. *

may the stars be mute! If

mf

ff *f* *poco* *rit.*

♩. * ♩. * ♩. * ♩. * ♩. *

dim - - in - - u - - en - - do

Tempo I.

mf

I could dwell where Is - ra - fel Hath dwelt, and he where

ped. * *ped.* * *ped.* * *ped.* * *ped.* * *ped.* * *ped.* *

I, He might not sing so wild - ly well a mor - tal me - - lo -

ped. * *ped.* * *ped.* * *ped.* * *ped.* * *ped.* * *ped.* * *ped.* * *ped.* *

dy, He might not sing so wild - - ly, A mor - tal me - - lo -

ped. * *ped.* * *ped.* * *ped.* * *ped.* * *ped.* * *ped.* * *ped.* * *ped.* *

very broad.

ff



dy ——— While a bold- - er note than this might swell From



rit.

ff

*Red.**

Red.

**Red.* Red.*

**Red.* Red.*

Red.

** Red.*

** Red.**

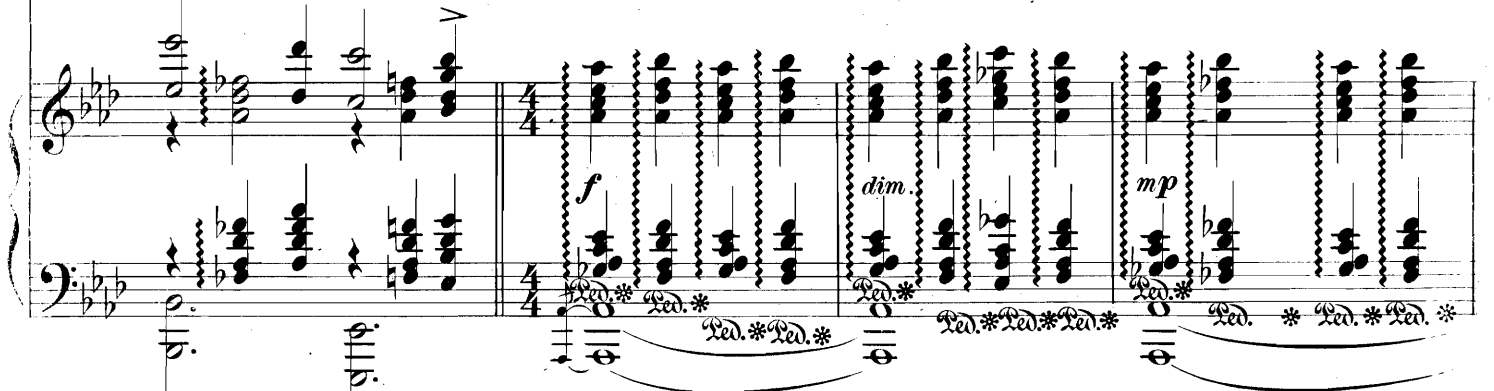
molto rit.

a tempo

mf



my lyre with-in the sky! From my lyre with-in the



Red.

** Red.* Red.**

3 Red.

*Red.*Red.**

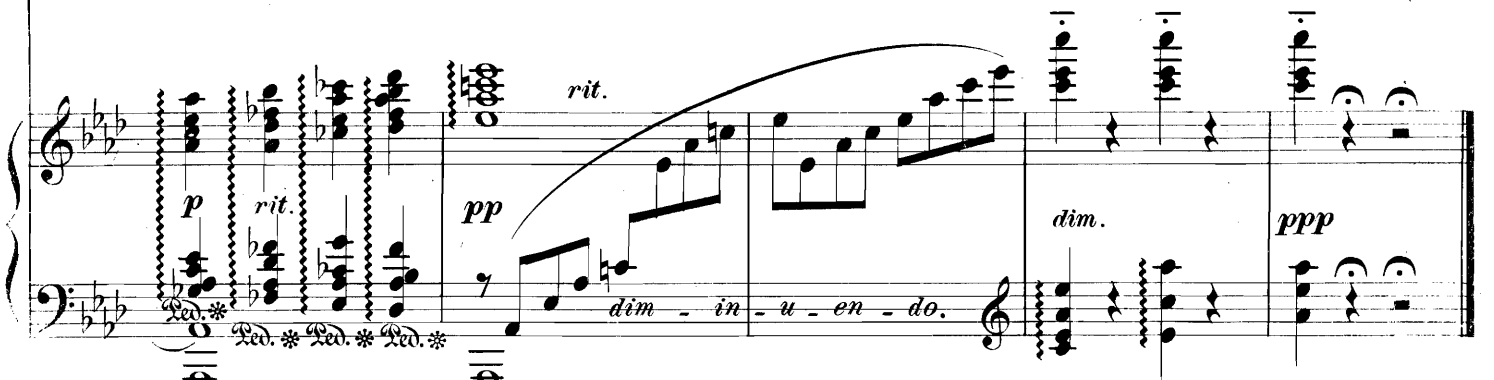
*Red.*Red.*Red.**

Red. Red.* Red.**

p



sky.



rit.

p

rit.

pp

dim.

ppp

dim - in - u - en - do.

1 & 2 Red. hold till -

THE WA-WAN PRESS

NEWTON CENTER
MASSACHUSETTS

THE OBJECT OF THE MOVEMENT

THE WA-WAN PRESS, at Newton Center, Massachusetts, is an enterprise organized and directly conducted by composers, in the interest of the best American composition. It aims to promote by publication and public hearings, the most progressive, characteristic, and serious works of American composers, known or unknown, and to present compositions based on the melodies of American folk-songs.

Many persons are already aware not only of the resource and promise, but of the increasing ripeness of the composer's art in this country. For these, and all who wish to enjoy the fruits of our undertaking as a whole, and who wish to add the unit of their personal force to the work of building up a musical art that shall represent the highest talents and ideals of American composers, our works are issued quarterly by subscription, to the amount of eighty to one hundred pages per year, at six dollars. This is a liberal reduction from sheet music prices. For artists, teachers, and others who may wish to procure single copies of our compositions, they are also obtainable in this form, at sheet music prices.

We invite correspondence from all who are interested, and will send prospectus and catalogue upon application. We will also be glad to send subscription issues or single copies of our compositions on approval.

THE WA-WAN PRESS.