

# OPUS - 28

## DIEZ PIEZAS FAVORITAS

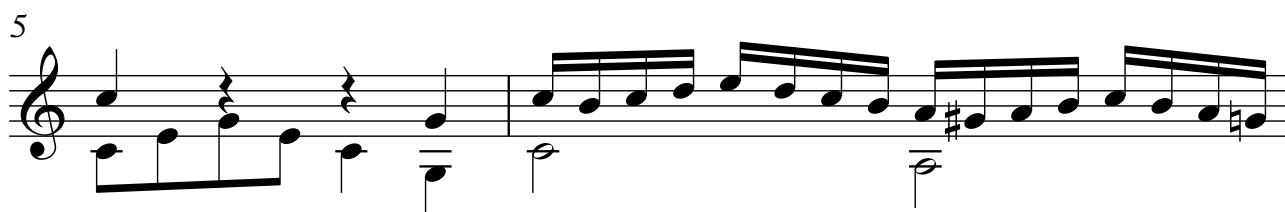
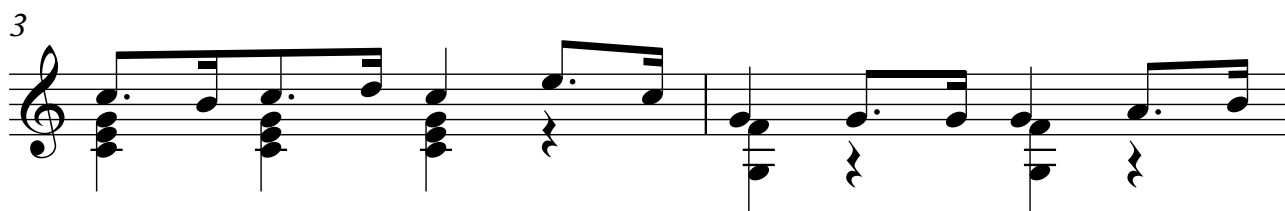
### Marcha de la Opera Agnes Sorel de Gyrowetz

#### NUMERO 4

TRANSCRIPCIÓN: LUIS ALVAREZ

ANTON DIABELLI  
(1751-1858)

$\text{♩} = 120$



2

11

Musical notation for measures 11 and 12. Measure 11 features a treble clef with a dotted quarter note on G4, followed by eighth notes on A4, B4, and C5. The bass line has a descending eighth-note scale from G3 to C2. Measure 12 continues with a dotted quarter note on D5, followed by eighth notes on C5, B4, and A4. The bass line has a dotted quarter note on G3, followed by eighth notes on F3, E3, and D3.

13

Musical notation for measures 13 and 14. Measure 13 starts with a treble clef and a dotted quarter note on G4, followed by eighth notes on A4, B4, and C5. The bass line has a dotted quarter note on G3, followed by eighth notes on F3, E3, and D3. Measure 14 continues with a dotted quarter note on D5, followed by eighth notes on C5, B4, and A4. The bass line has a dotted quarter note on G3, followed by eighth notes on F3, E3, and D3.

15

Musical notation for measures 15 and 16. Measure 15 features a treble clef with a dotted quarter note on G4, followed by eighth notes on A4, B4, and C5. The bass line has a dotted quarter note on G3, followed by eighth notes on F3, E3, and D3. Measure 16 continues with a dotted quarter note on D5, followed by eighth notes on C5, B4, and A4. The bass line has a dotted quarter note on G3, followed by eighth notes on F3, E3, and D3.

17

Musical notation for measures 17 and 18. Measure 17 features a treble clef with a dotted quarter note on G4, followed by eighth notes on A4, B4, and C5. The bass line has a dotted quarter note on G3, followed by eighth notes on F3, E3, and D3. Measure 18 continues with a dotted quarter note on D5, followed by eighth notes on C5, B4, and A4. The bass line has a dotted quarter note on G3, followed by eighth notes on F3, E3, and D3.

19

Musical notation for measures 19 and 20. Measure 19 features a treble clef with a dotted quarter note on G4, followed by eighth notes on A4, B4, and C5. The bass line has a dotted quarter note on G3, followed by eighth notes on F3, E3, and D3. Measure 20 continues with a dotted quarter note on D5, followed by eighth notes on C5, B4, and A4. The bass line has a dotted quarter note on G3, followed by eighth notes on F3, E3, and D3.

21

Musical notation for measures 21 and 22. Measure 21 features a treble clef with a dotted quarter note on G4, followed by eighth notes on A4, B4, and C5. The bass line has a dotted quarter note on G3, followed by eighth notes on F3, E3, and D3. Measure 22 continues with a dotted quarter note on D5, followed by eighth notes on C5, B4, and A4. The bass line has a dotted quarter note on G3, followed by eighth notes on F3, E3, and D3.

23

Musical notation for measures 23 and 24. Measure 23 features a treble clef with a dotted quarter note on G4, followed by eighth notes on A4, B4, and C5. The bass line has a dotted quarter note on G3, followed by eighth notes on F3, E3, and D3. Measure 24 continues with a dotted quarter note on D5, followed by eighth notes on C5, B4, and A4. The bass line has a dotted quarter note on G3, followed by eighth notes on F3, E3, and D3.