

BWV - 1068

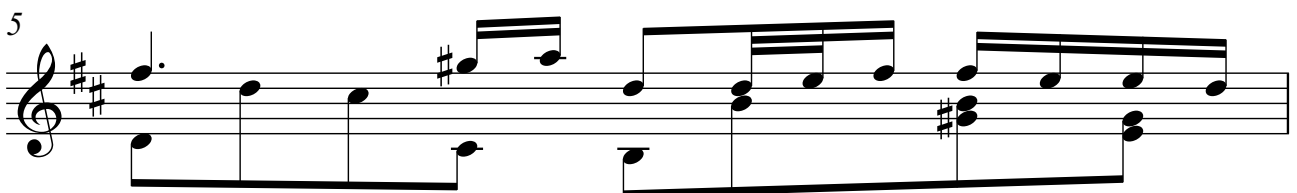
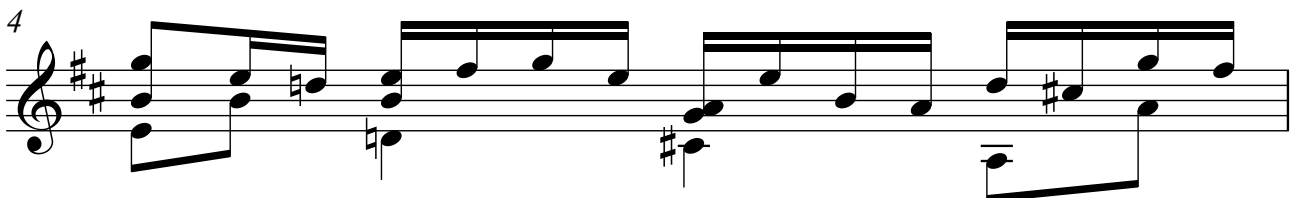
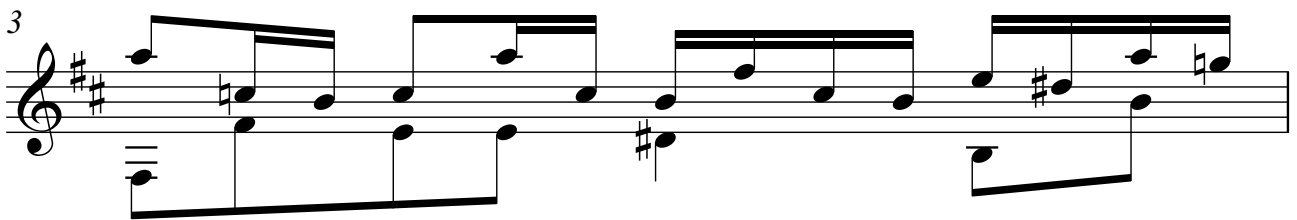
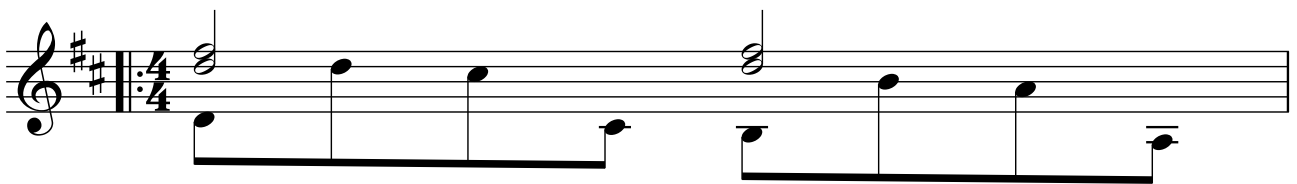
SUITE N° 3

2.- AIR

TRANSCRIPCIÓN: LUIS ALVAREZ

J. S. BACH
(1685-1750)

$\text{♩} = 40$



2

6

1.

7

2.

8

8

9

9

10

10

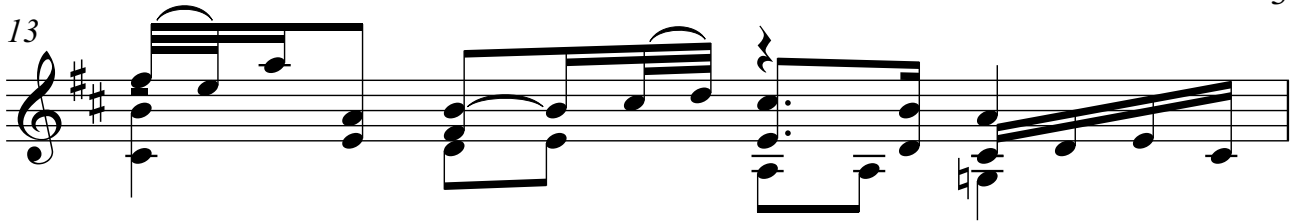
11

11

12

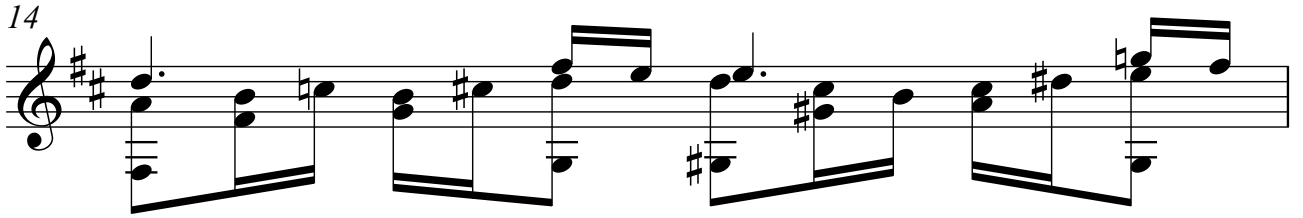
12

13



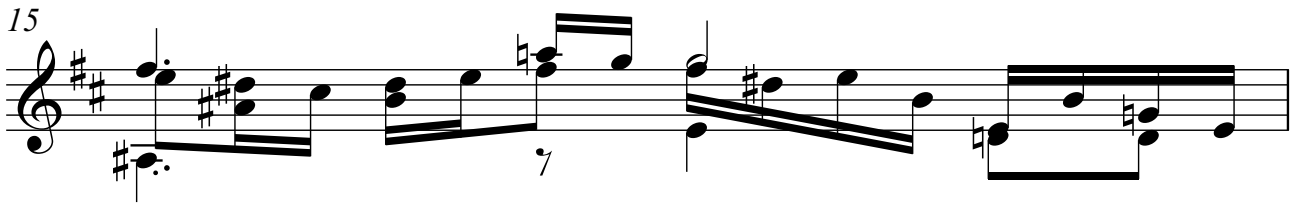
Musical notation for measure 13, featuring a treble clef, a key signature of two sharps (F# and C#), and a 3/4 time signature. The melody consists of eighth and sixteenth notes, with a fermata over the final note. The bass line provides harmonic support with chords and single notes.

14



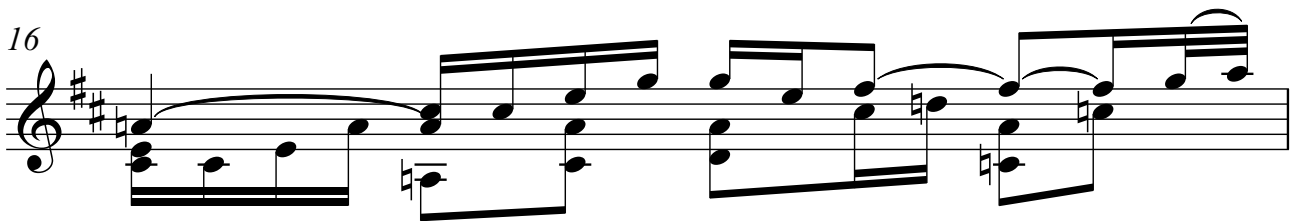
Musical notation for measure 14, continuing the piece with similar rhythmic patterns and harmonic structure. The melody is active with eighth and sixteenth notes, and the bass line features chords and single notes.

15



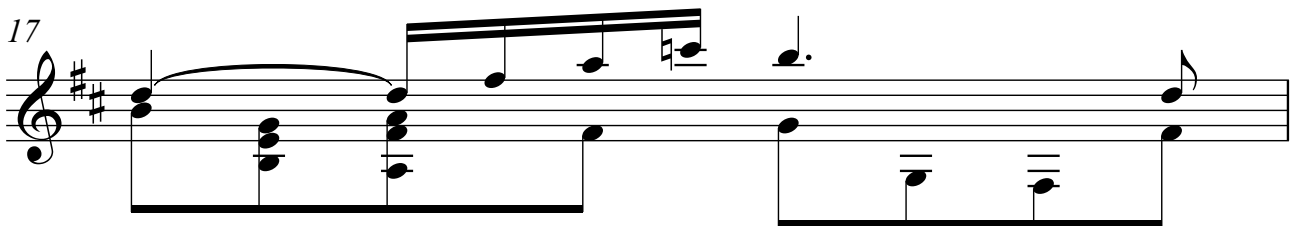
Musical notation for measure 15, including a fermata over the final note of the melody. The bass line continues with harmonic accompaniment.

16



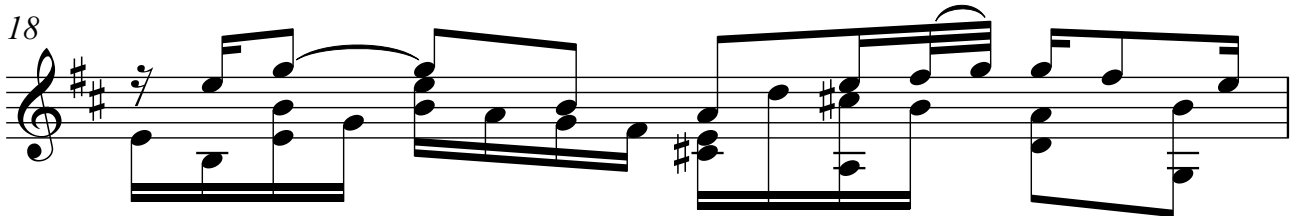
Musical notation for measure 16, featuring a long melodic line with a fermata over the final note. The bass line provides a steady accompaniment.

17



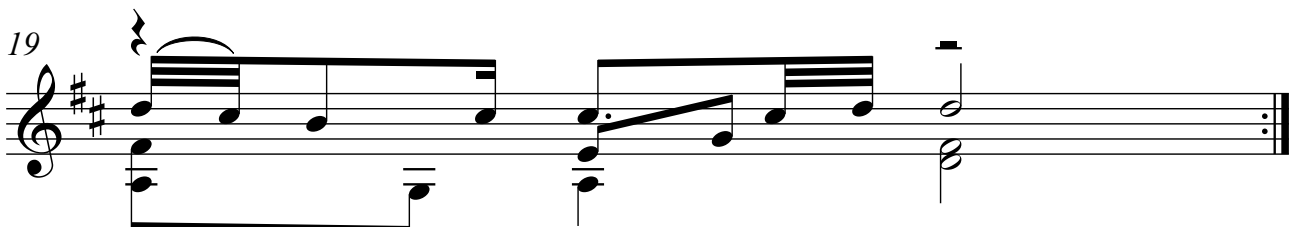
Musical notation for measure 17, showing a melodic phrase with a fermata over the final note. The bass line consists of chords and single notes.

18



Musical notation for measure 18, featuring a melodic phrase with a fermata over the final note. The bass line continues with harmonic support.

19



Musical notation for measure 19, the final measure on this page, ending with a double bar line and repeat dots. The melody concludes with a fermata over the final note.